

SYSTEMS AND ORDER

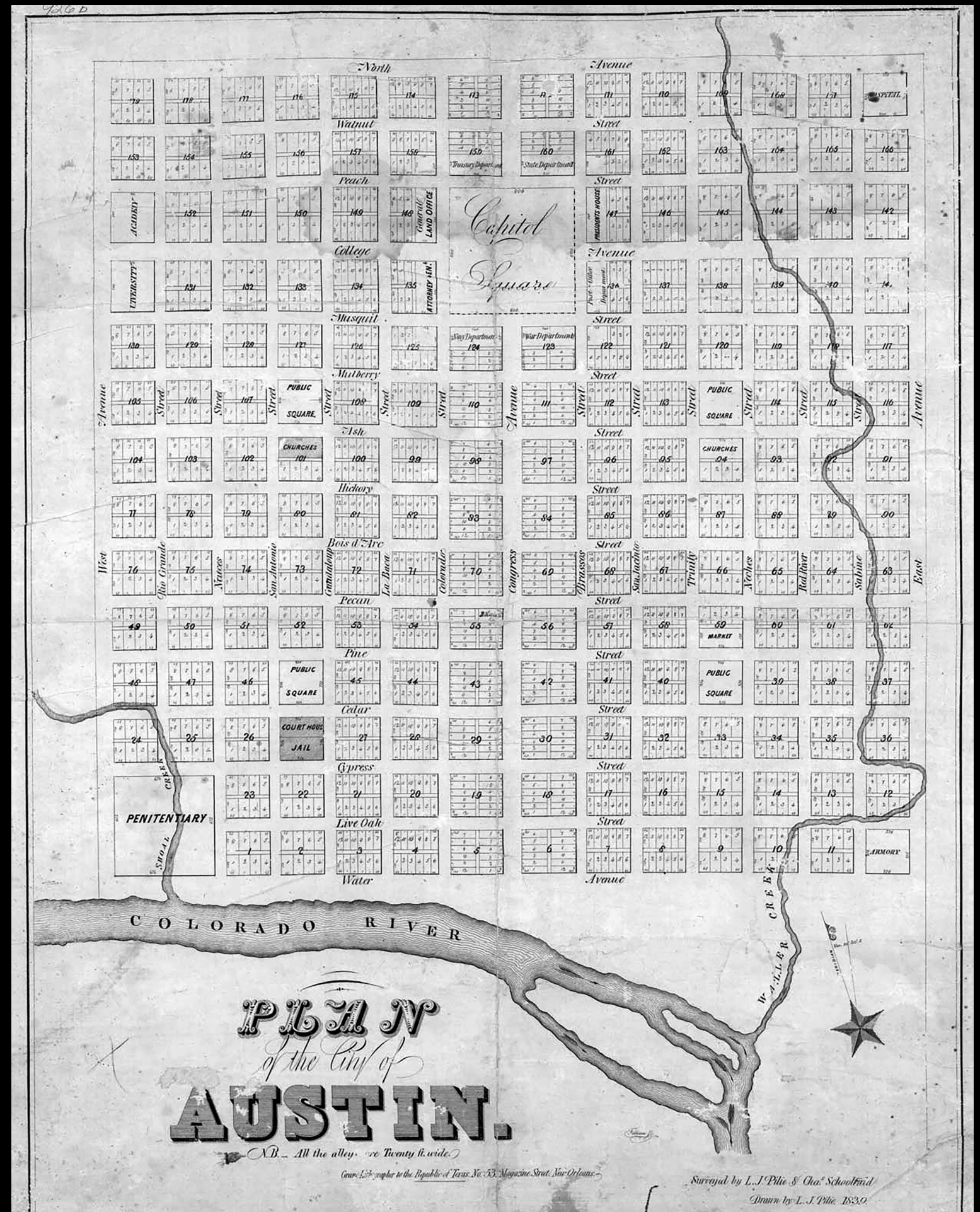
Architecture is the underlying structure of anything.



“...the settings  
where people  
celebrate  
and friends  
run into each  
other...”

-Edwin Waller

1839, Austin City Planner













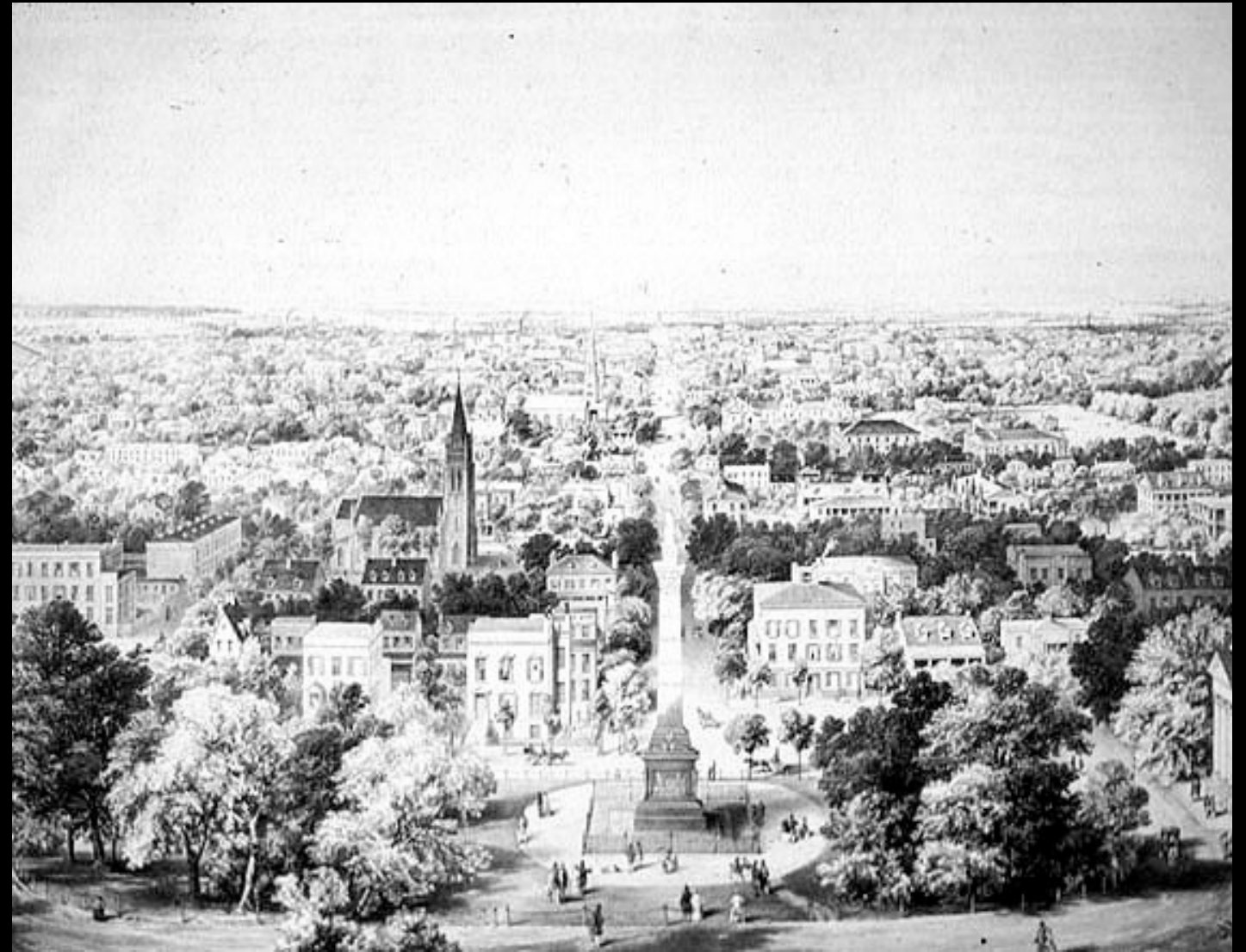
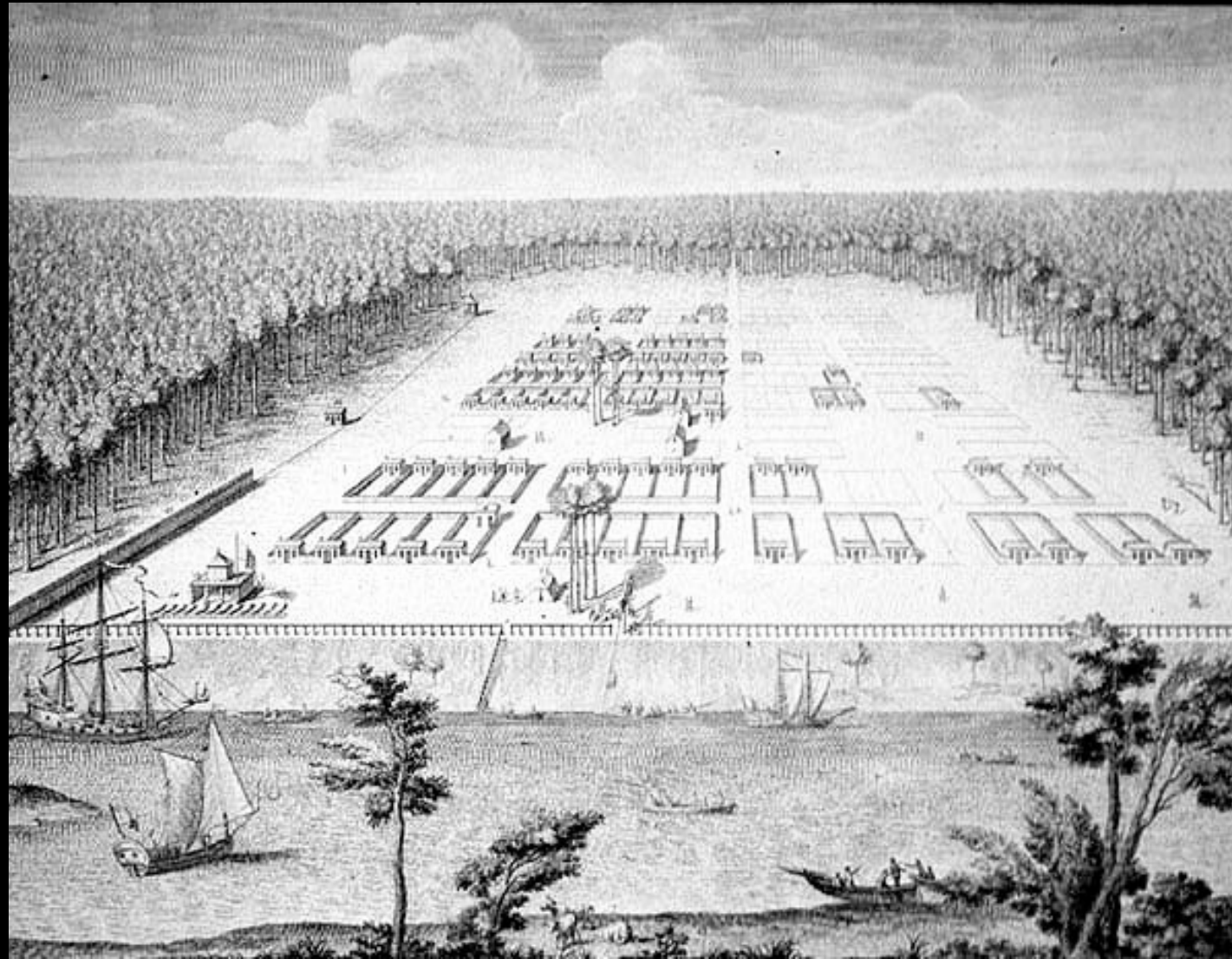


“By such a colony,  
families who  
would otherwise  
starve, will be  
provided for and  
made masters of  
lands.

-James Oglethorpe

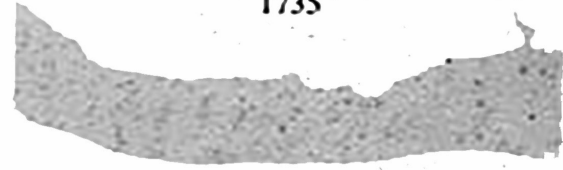
1733, Savannah City Planner



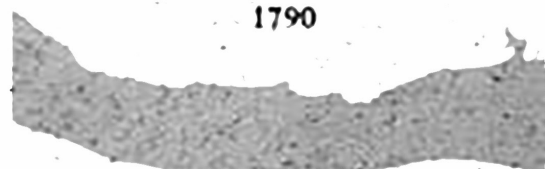
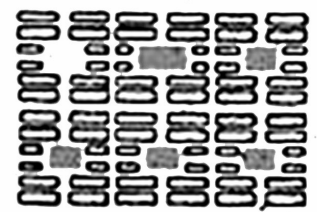




1737



1735



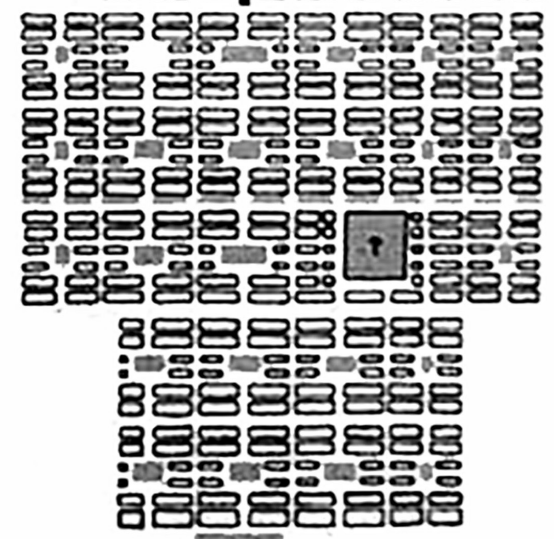
1790



1815

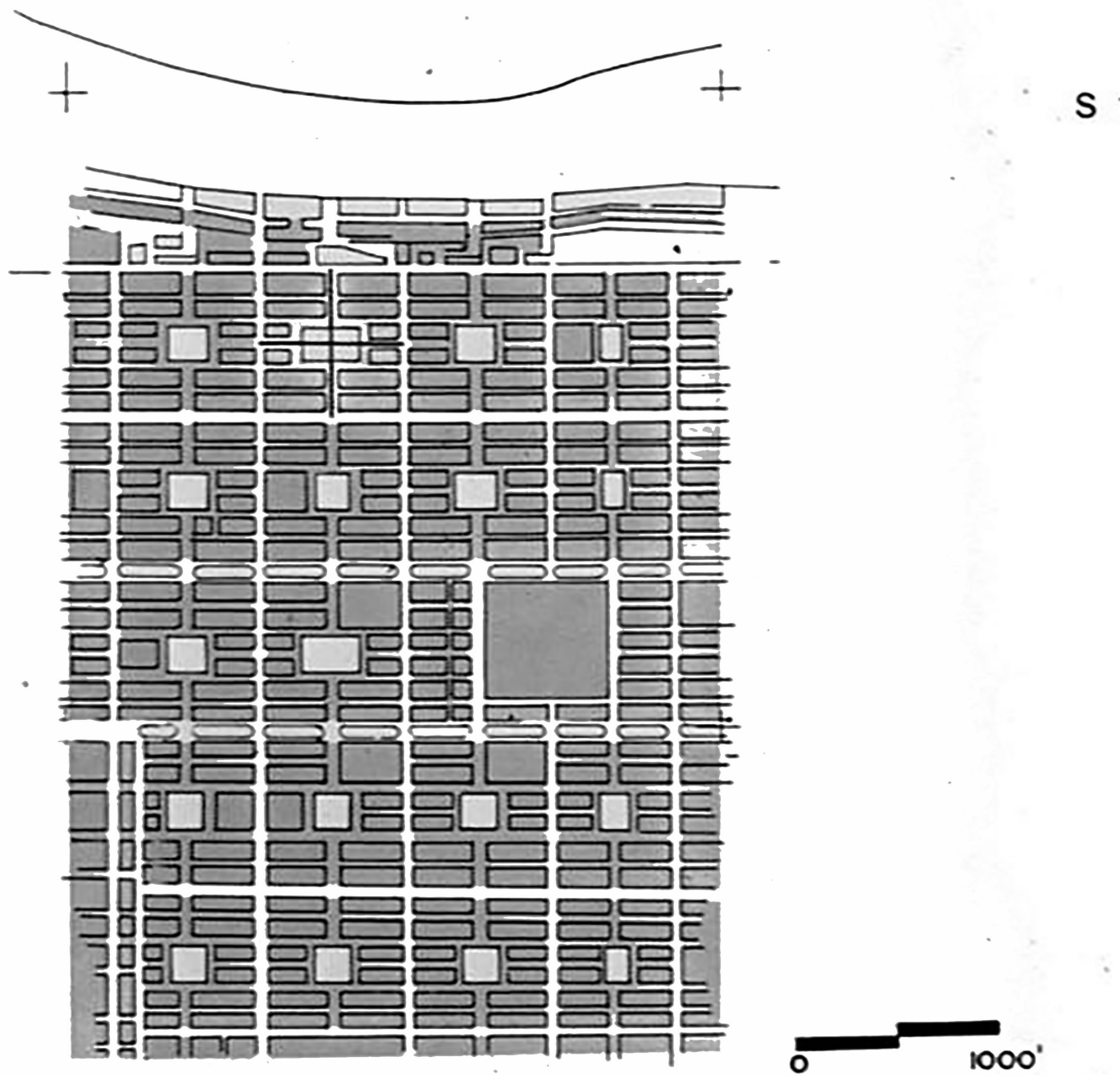


1856

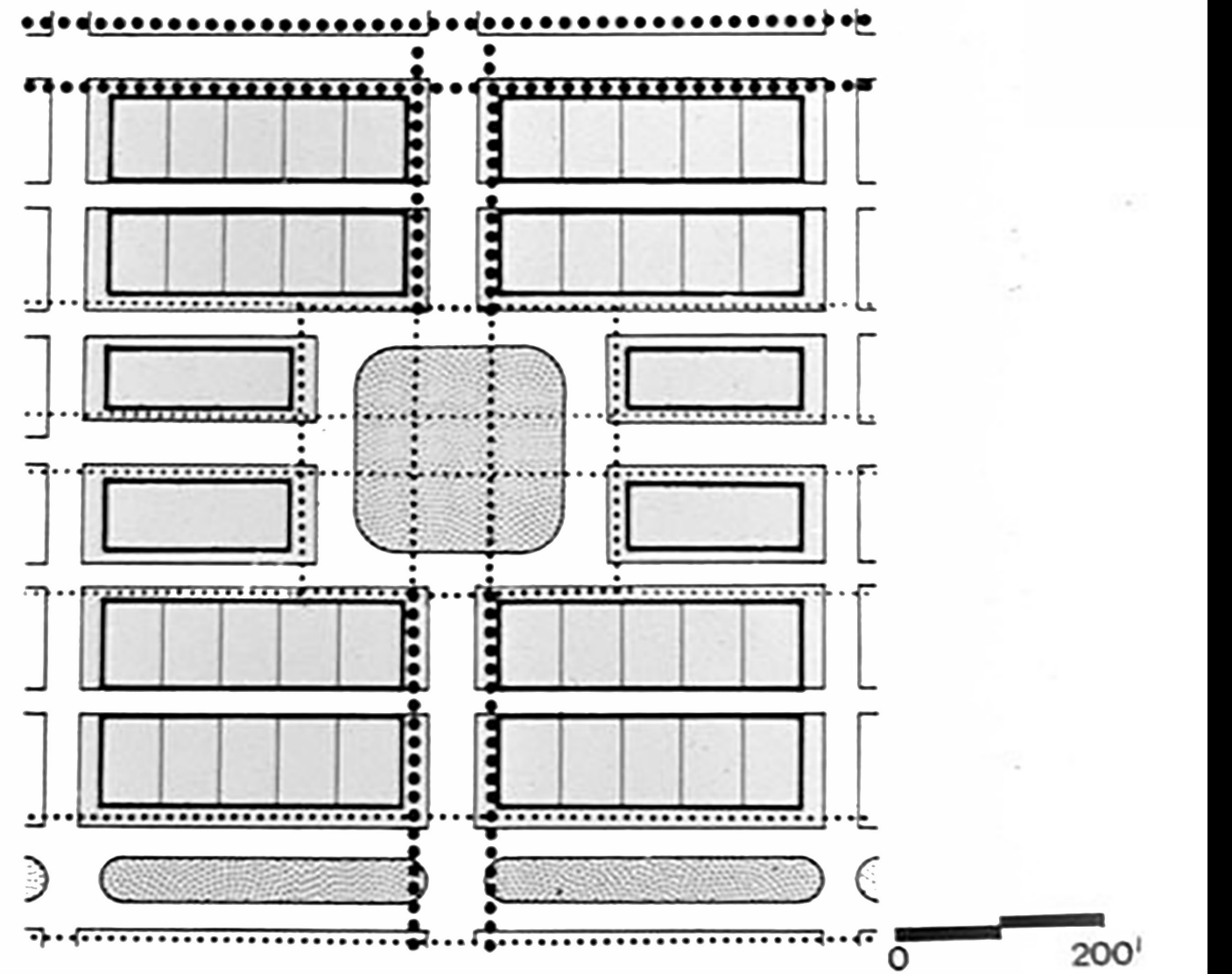


After 1856



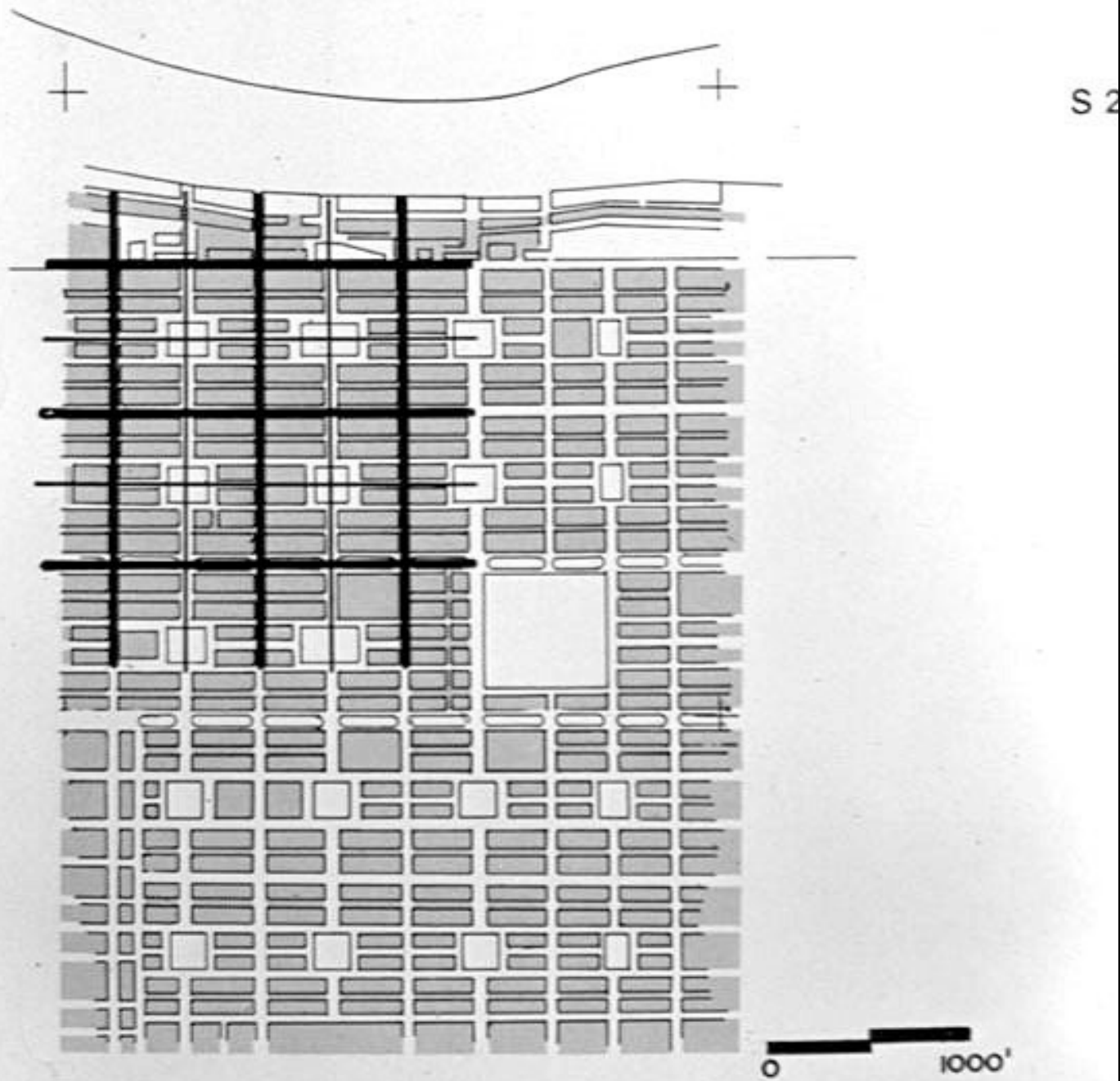


SAVANNAH  
 ORDER: GRID OF WARDS  
 1" = 1000'



SAVANNAH  
 STRUCTURE: SCHEMATIC PLAN OF A WARD  
 INTERNAL PARCELING AND  
 ACTIVITY PATTERN  
 ●●●●●●●● INTENSITIES OF  
 ..... PEDESTRIAN USE  
 1" = 200'

S 2

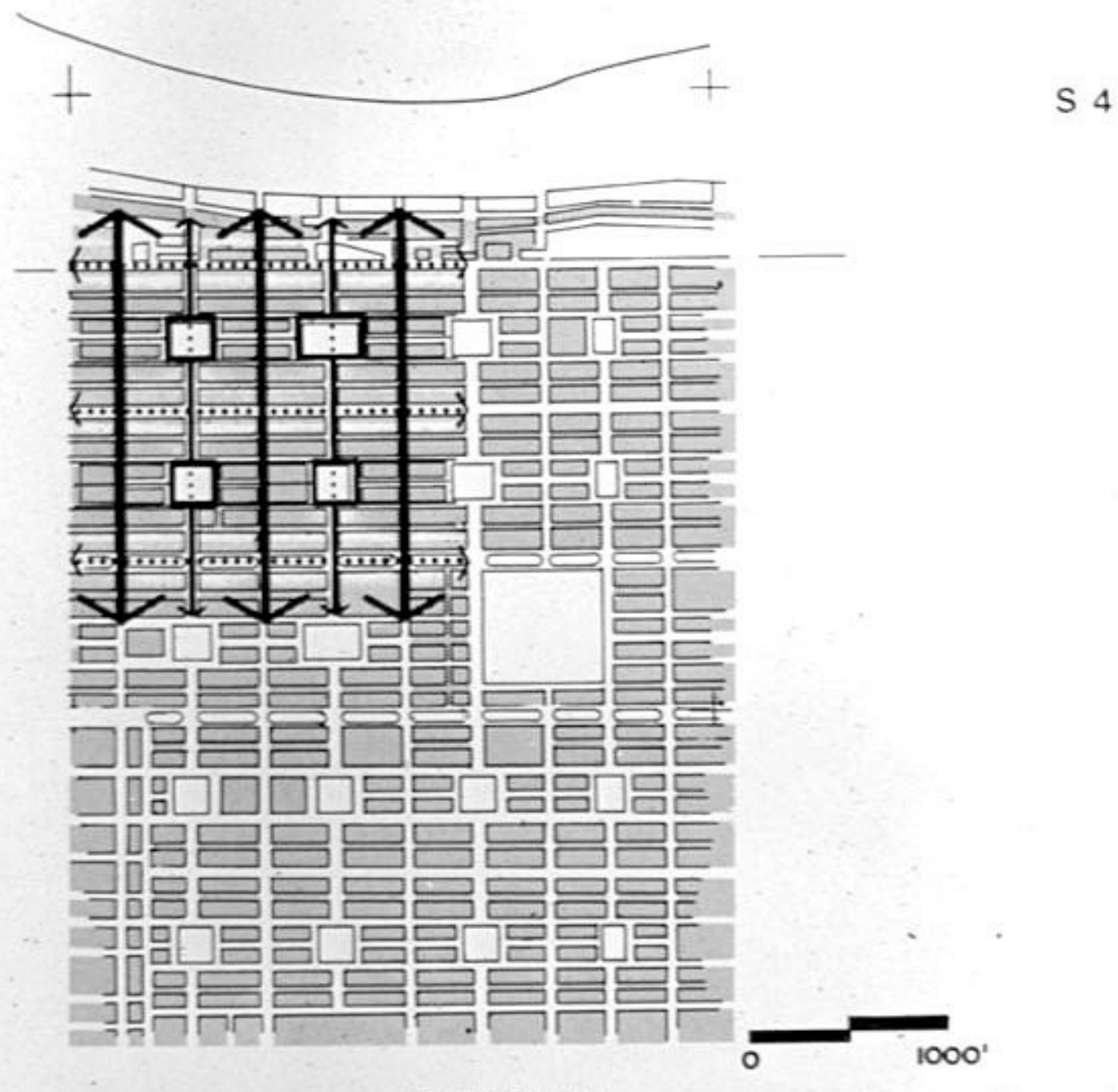


SAVANNAH 1" = 1000'

---

ORDER: DIFFERENTIATION OF PRINCIPAL ELEMENTS

S 4



SAVANNAH 1" = 1000'

---

STRUCTURE: DIFFERENTIATION BY SCHEMA OF ACTIVITY PATTERNS















Architecture is the underlying structure of anything.

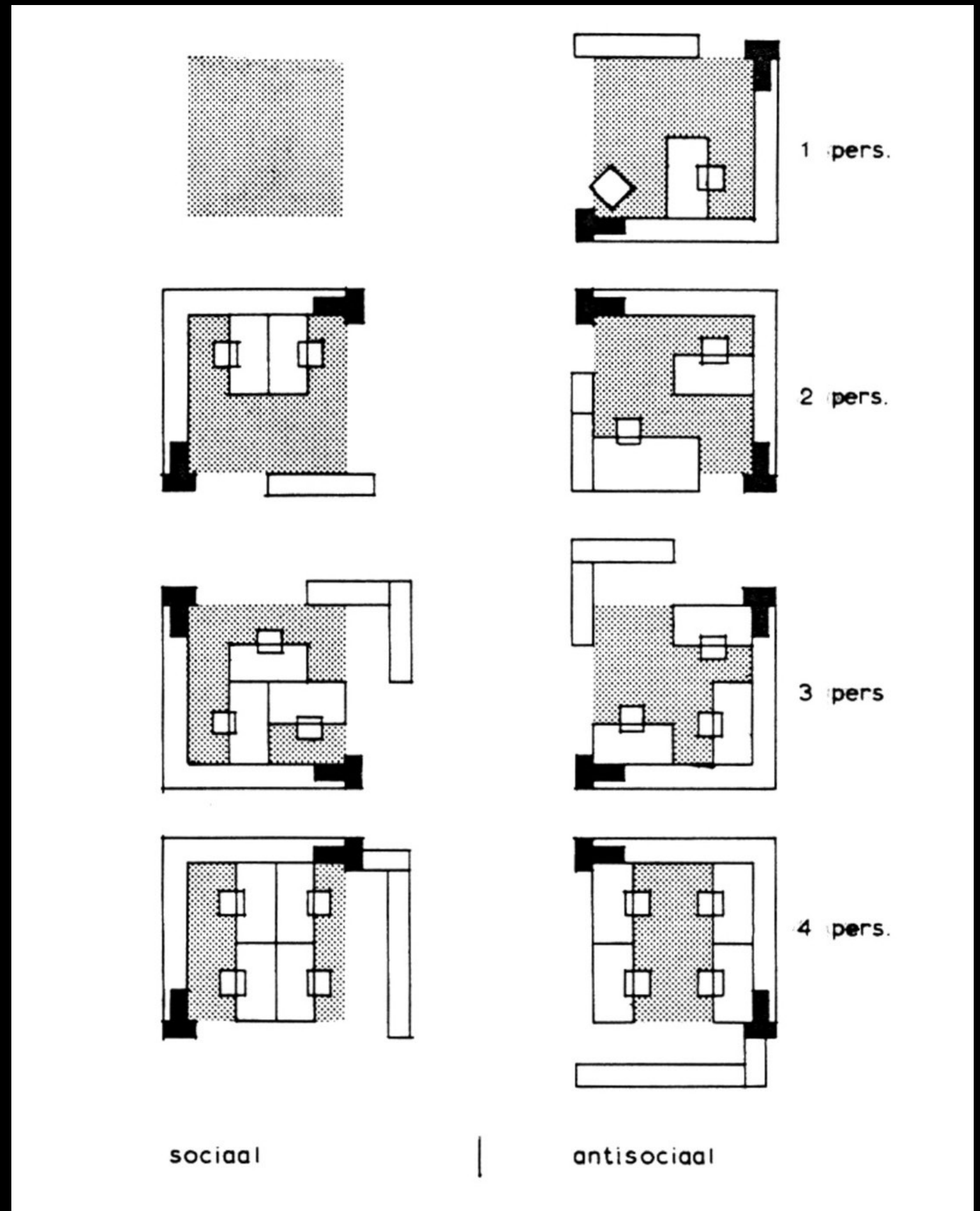




We try to arrive  
at a wealth  
of formal  
expression by  
using simple,  
sober means.

-Herman  
Hertzberger

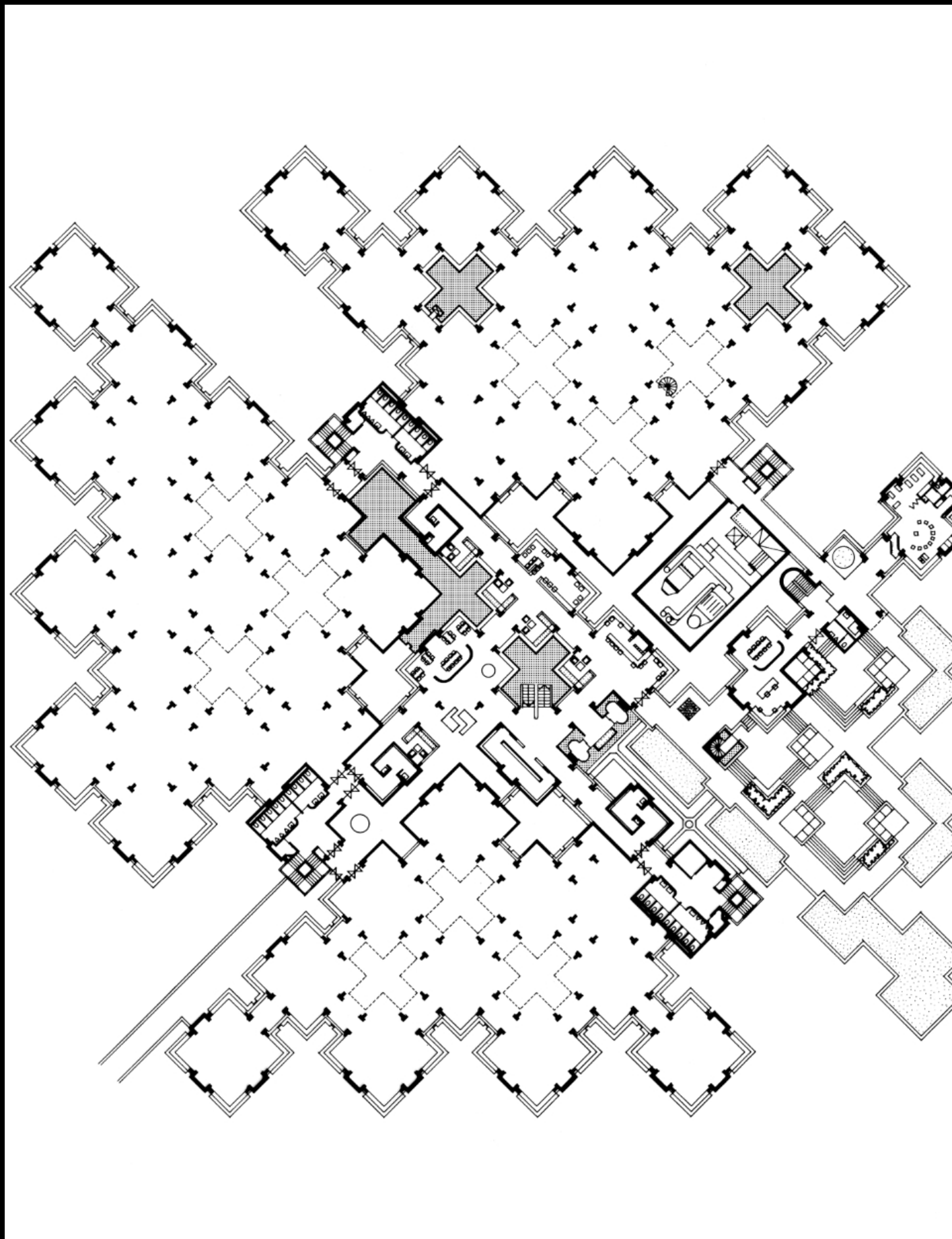
1972, Architect and Founder of AHH



















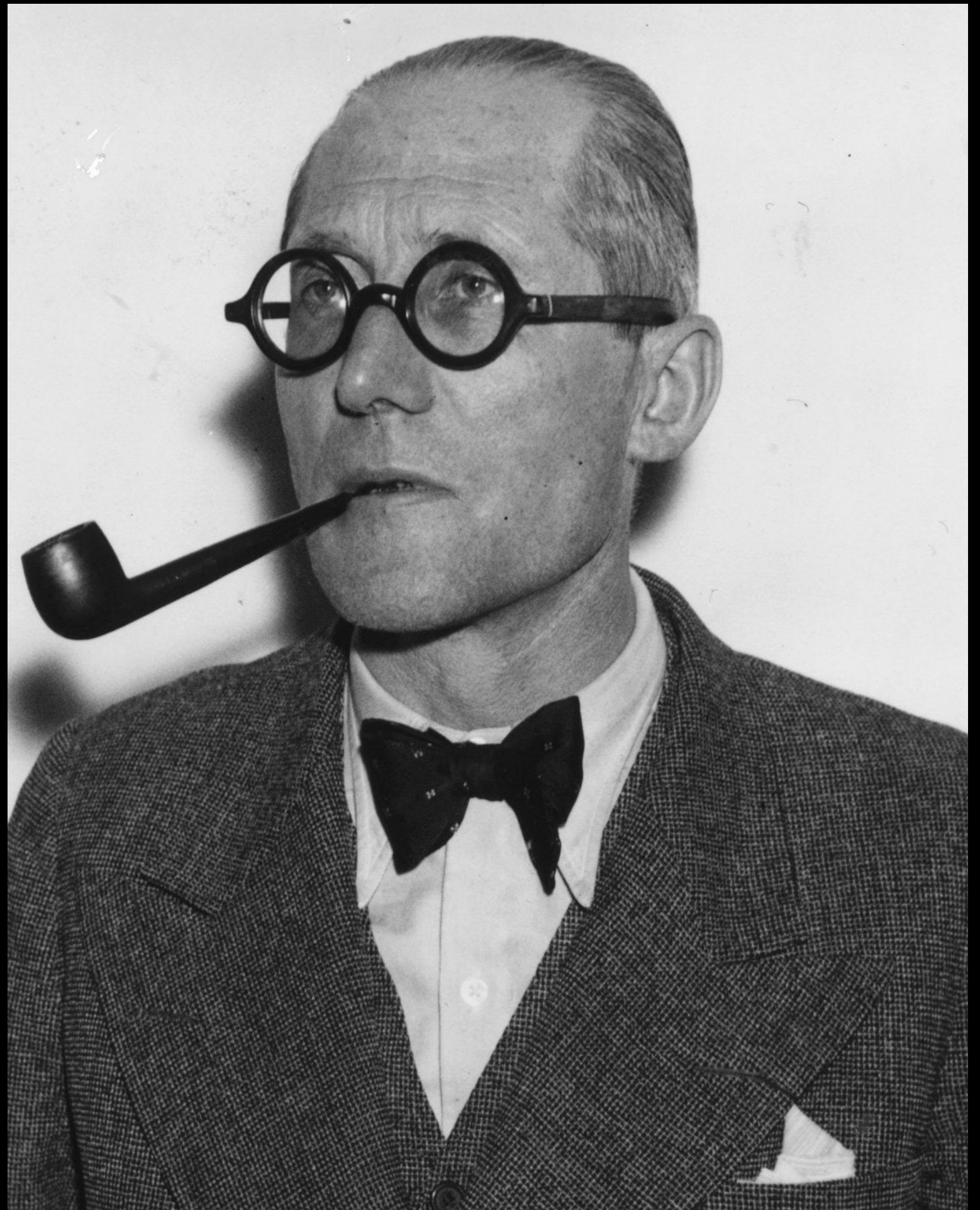


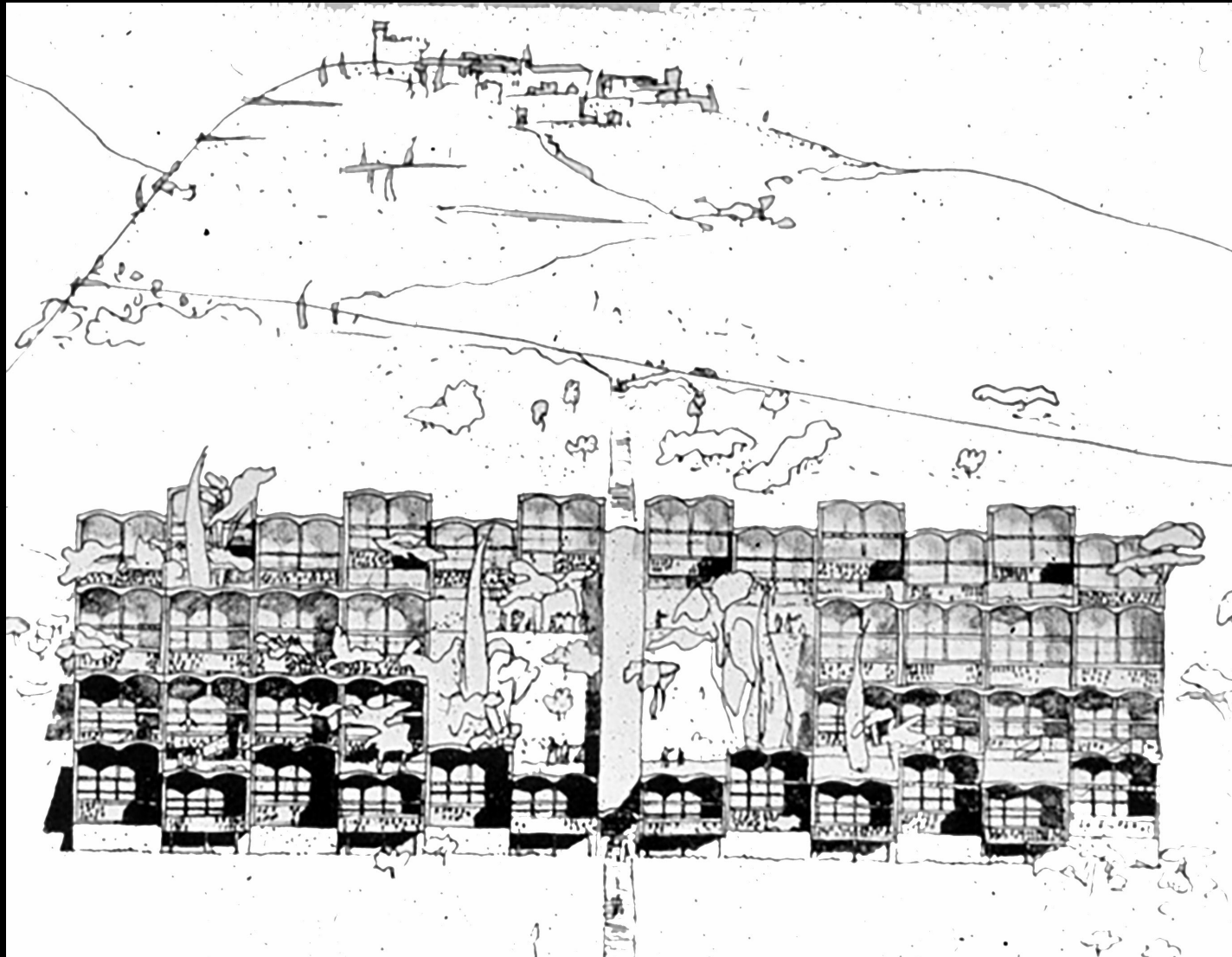




“Space and  
light and  
order. Those  
are the things  
that men  
need...”

-Le Corbusier

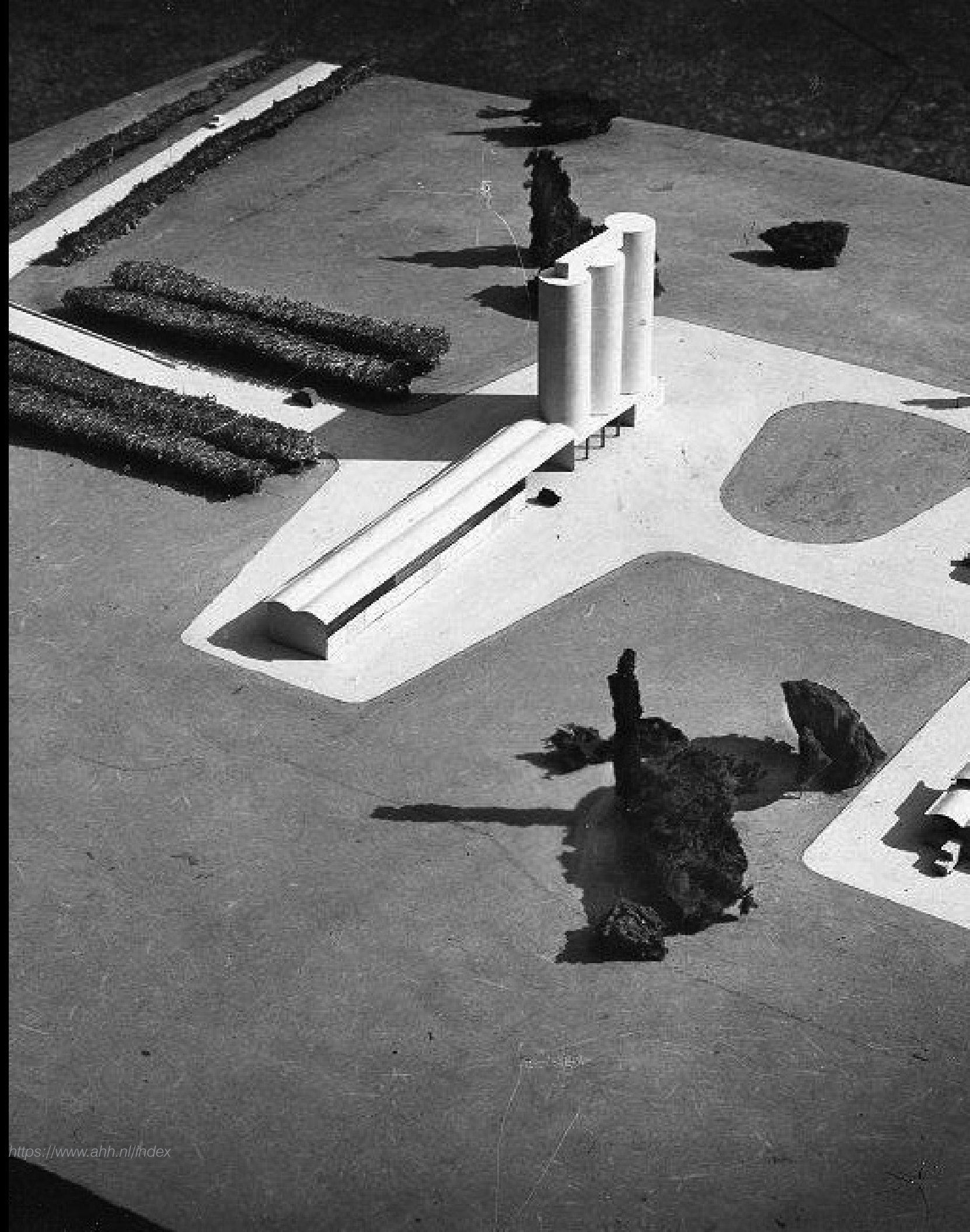


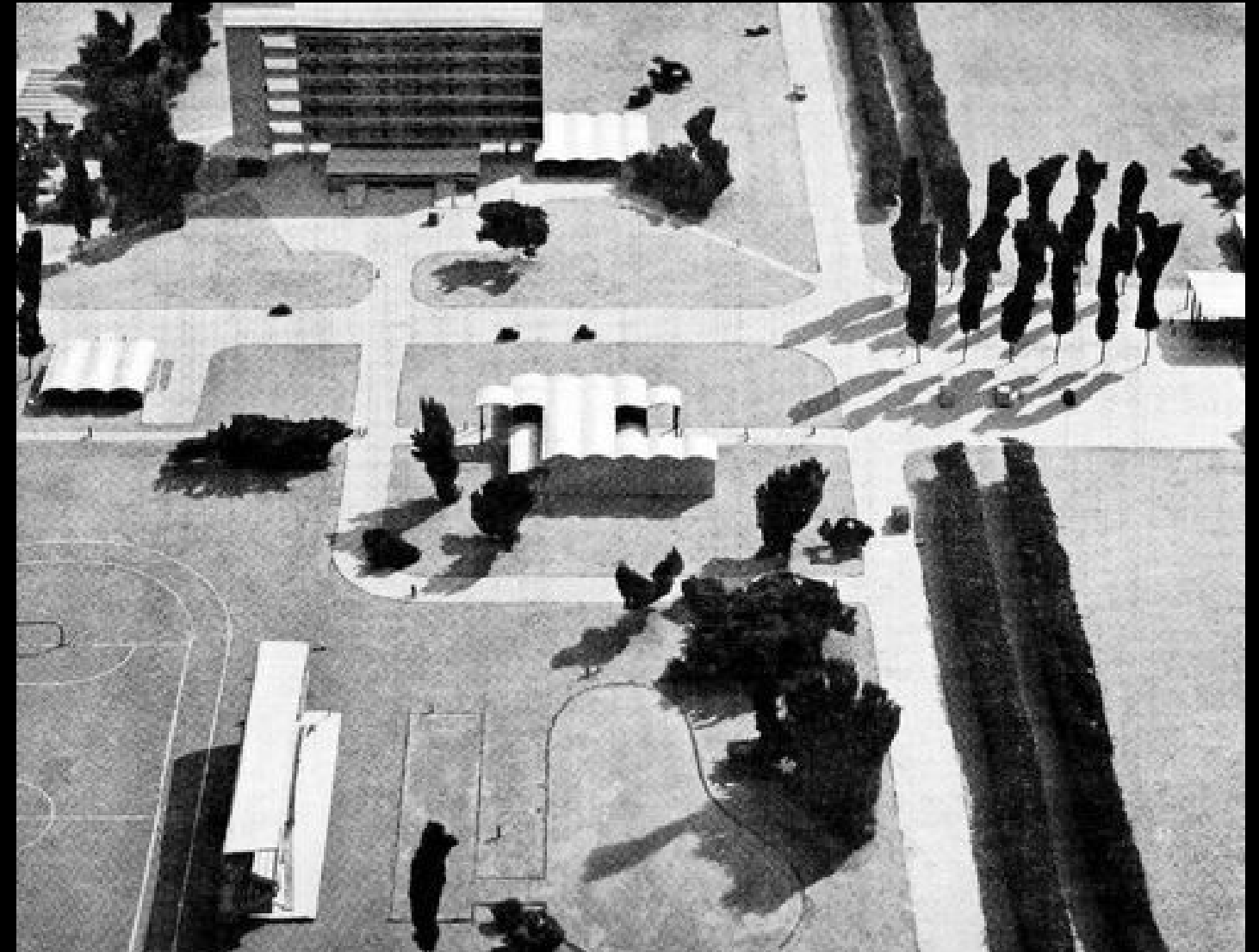
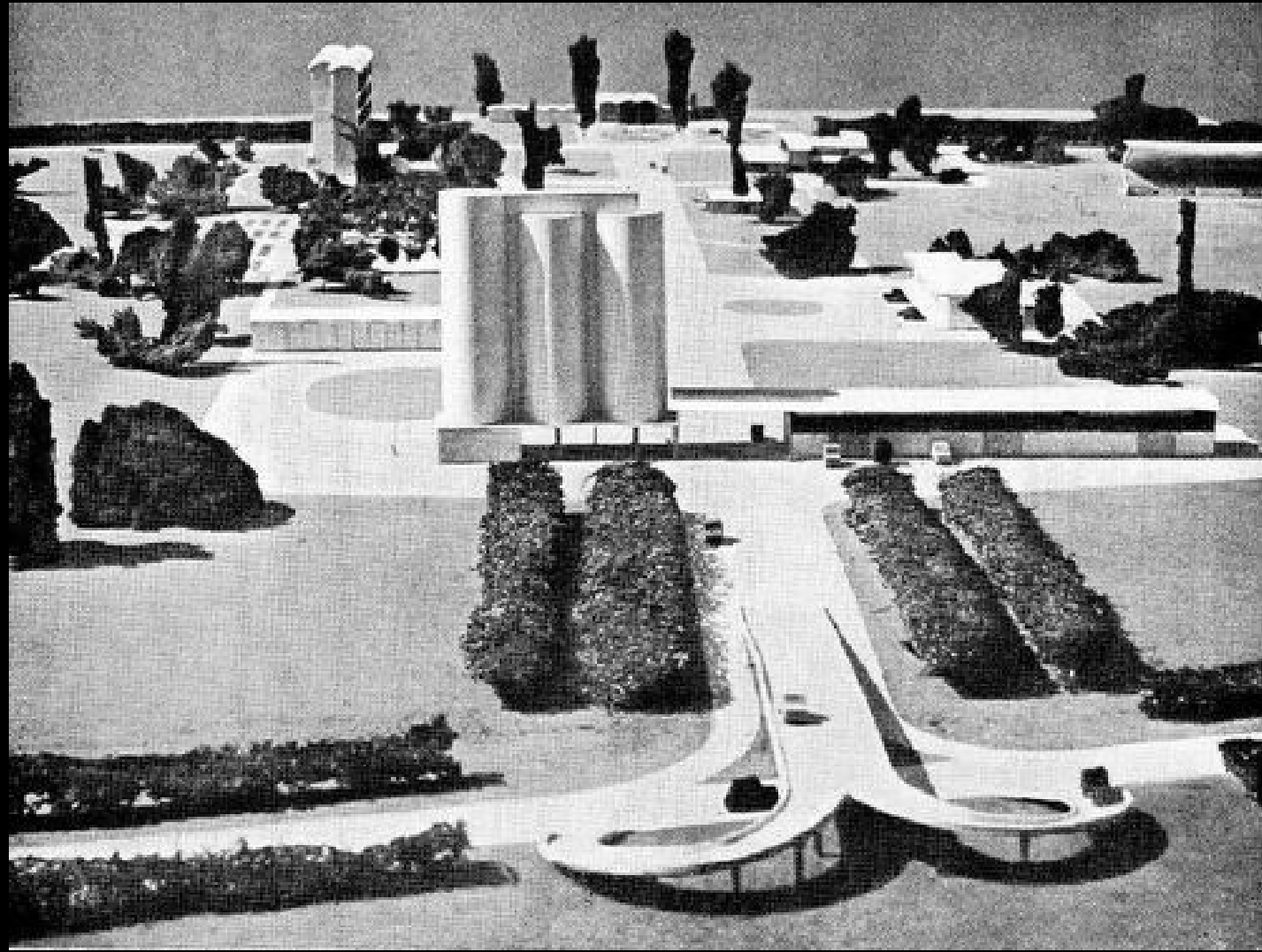


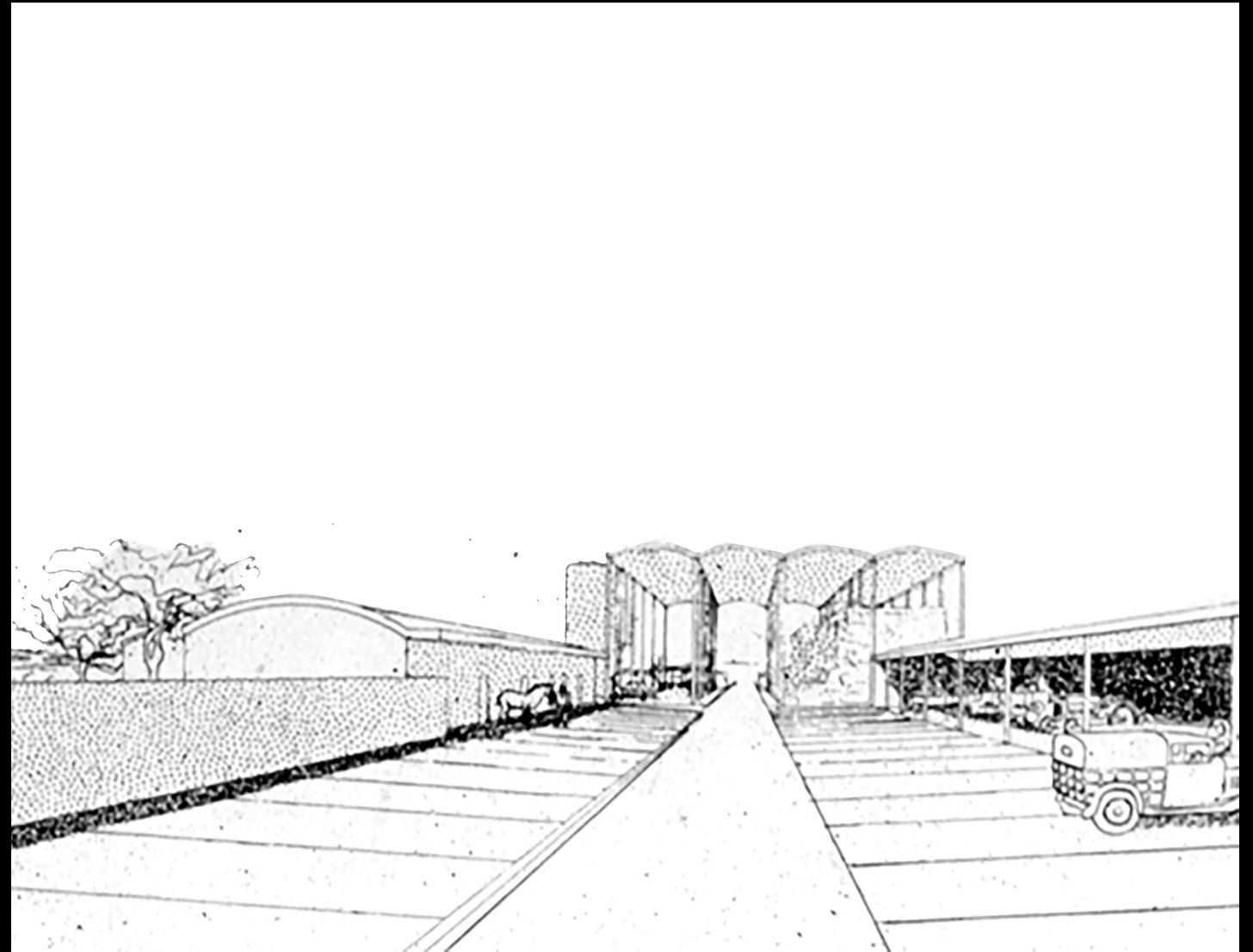
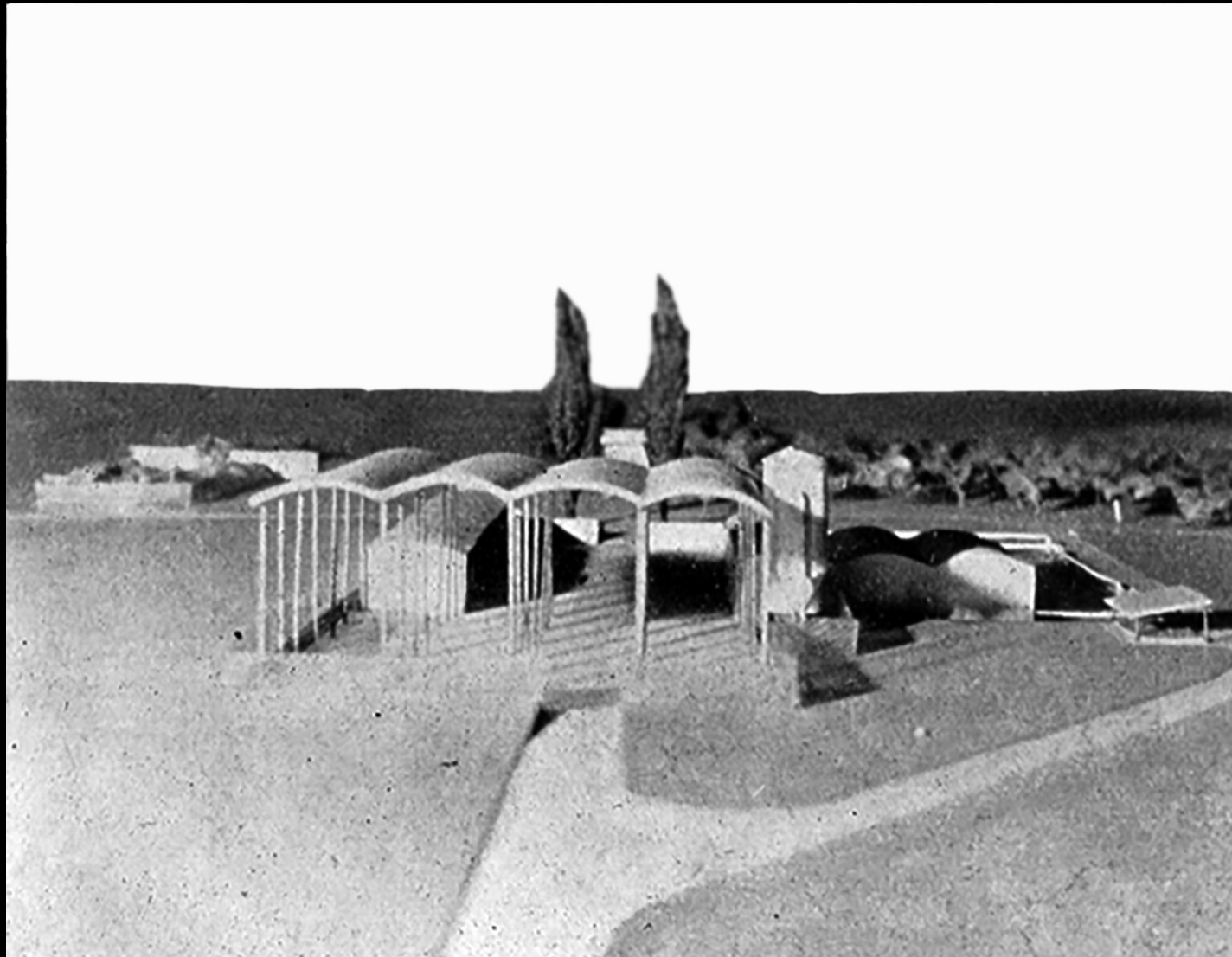
Farming Cooperative Village

Le Corbusier

1930s







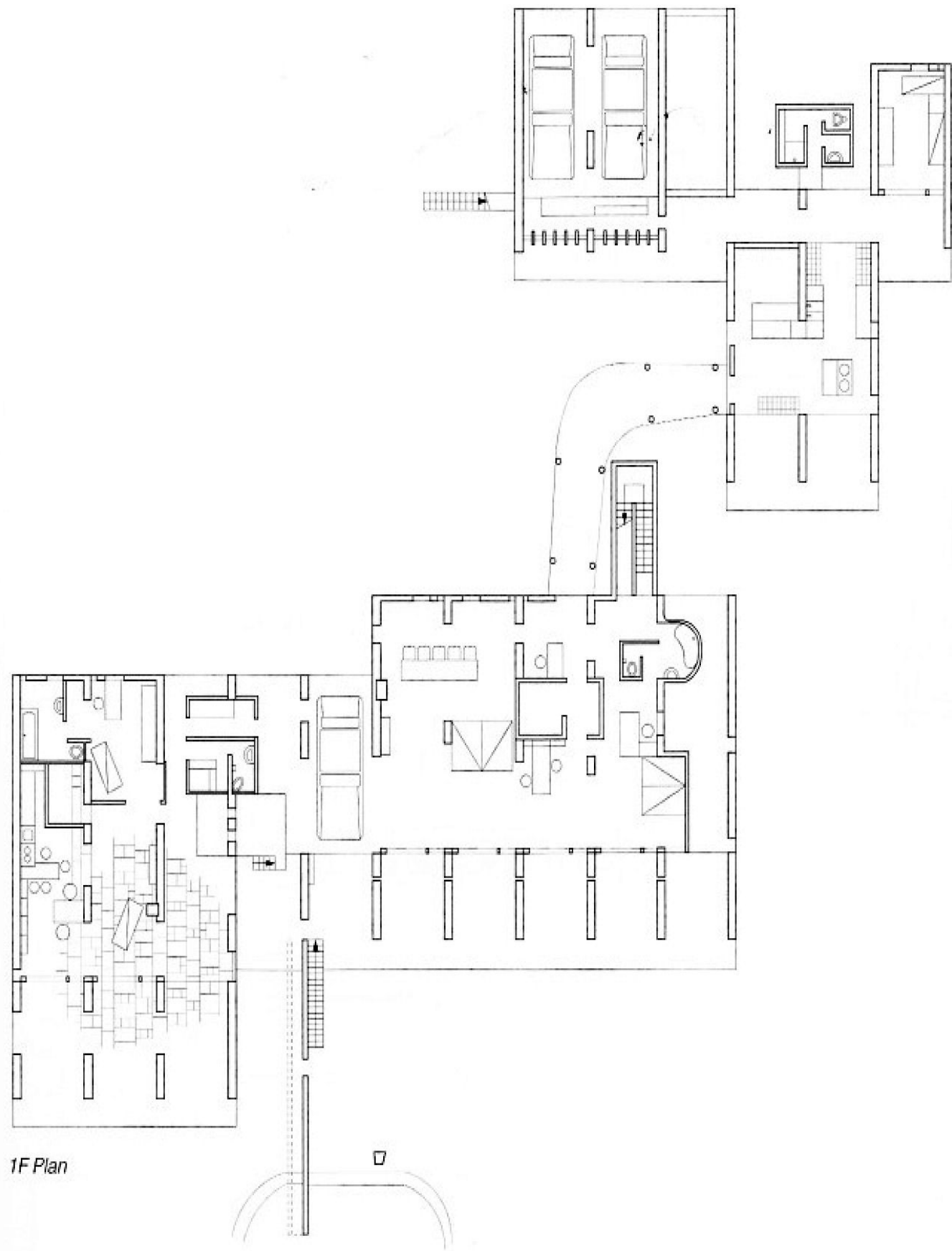
Sarabhai Residence

Ahmedabad, India

Le Corbusier

1952





1F Plan









Kimbell Art Museum

Louis I. Kahn

Fort Worth, TX

1972



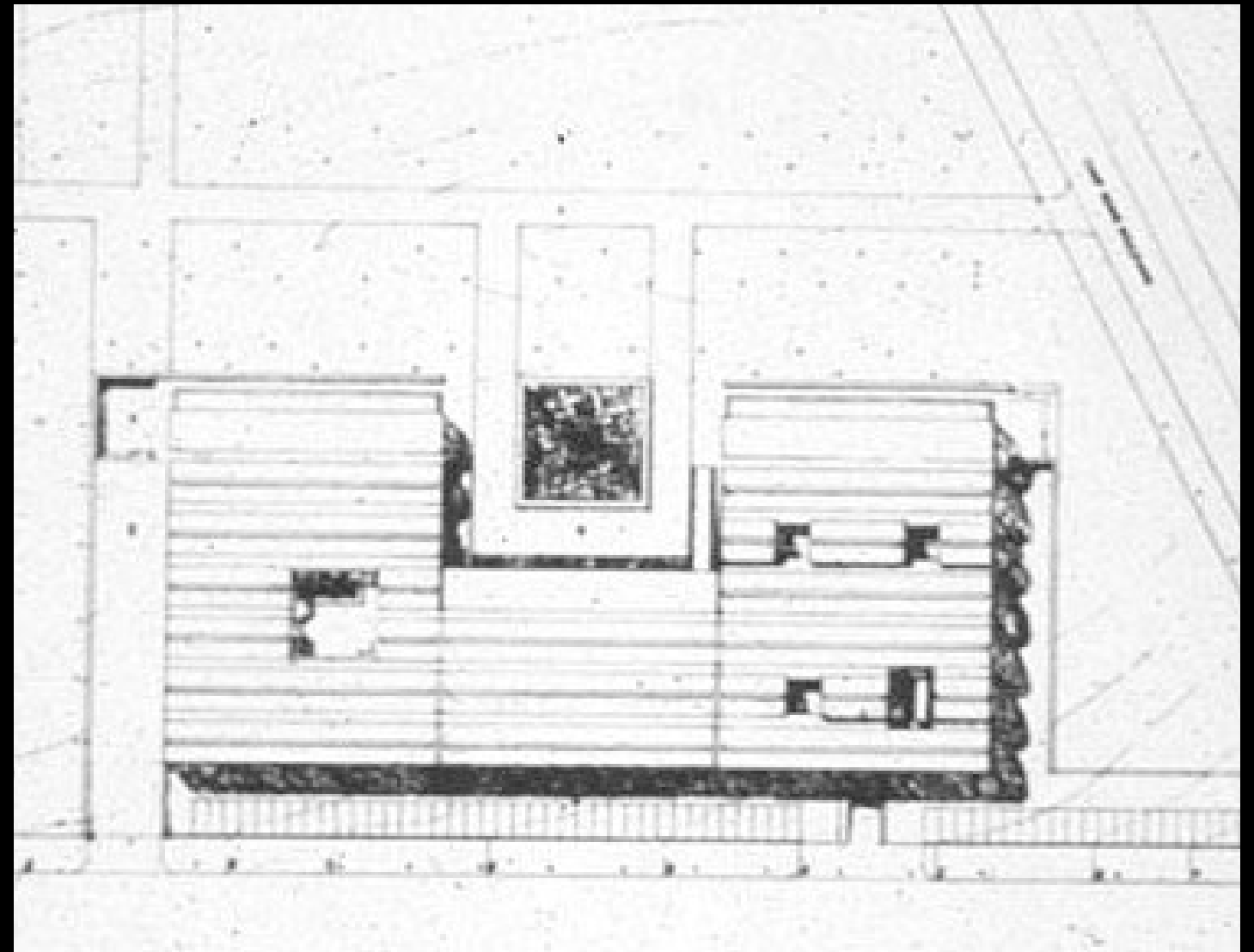




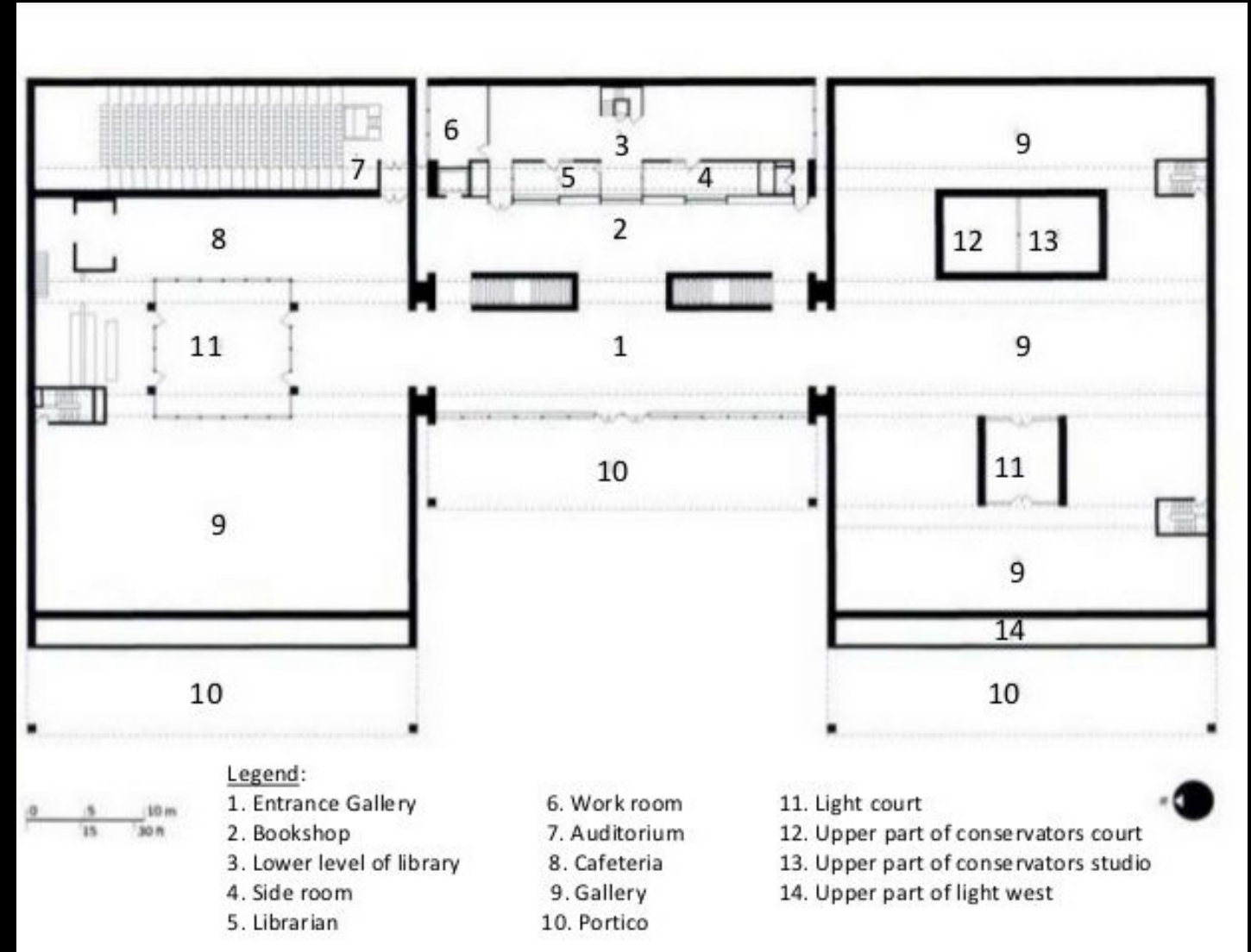




















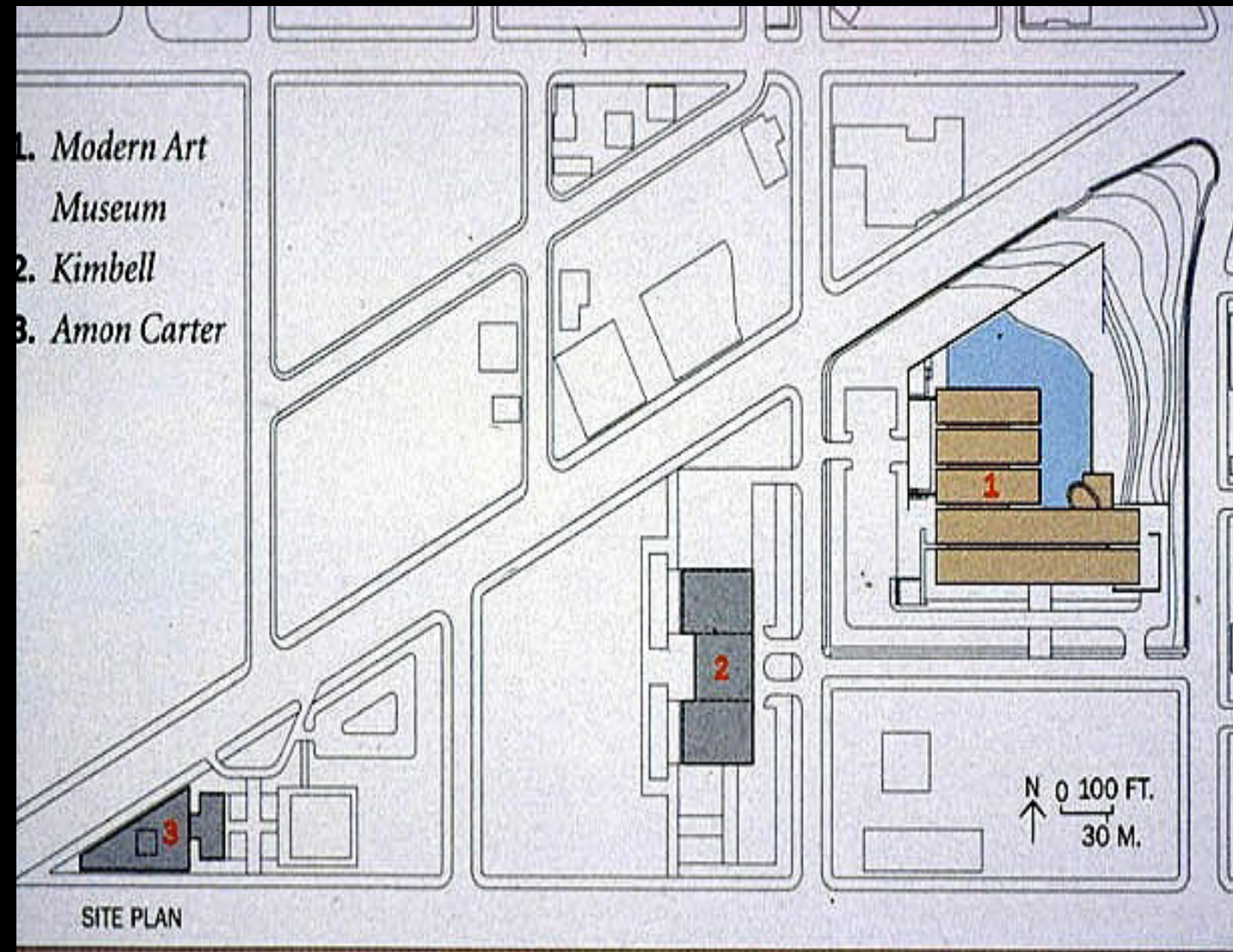
Modern Art Museum

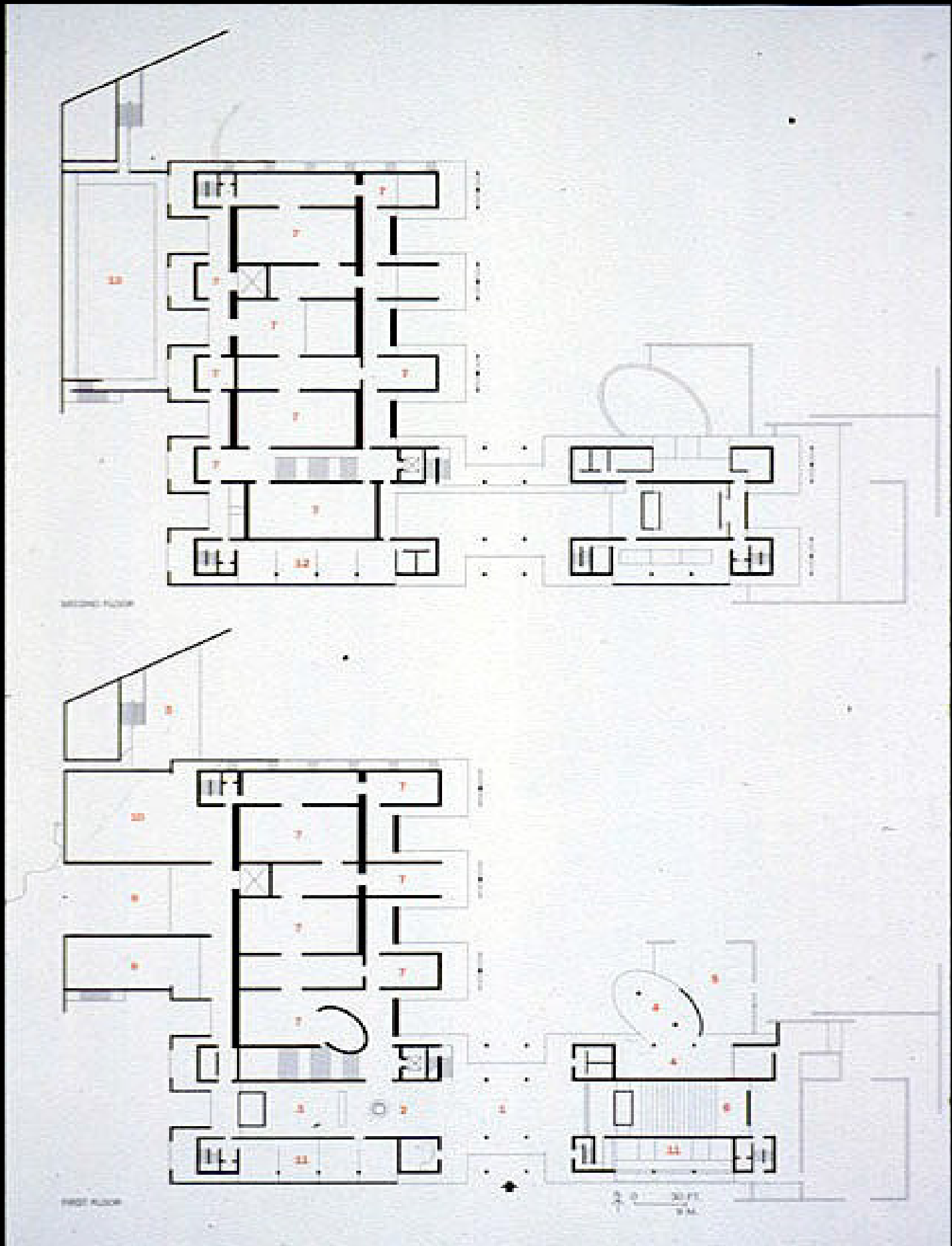
Tadao Ando

Fort Worth, TX

2002

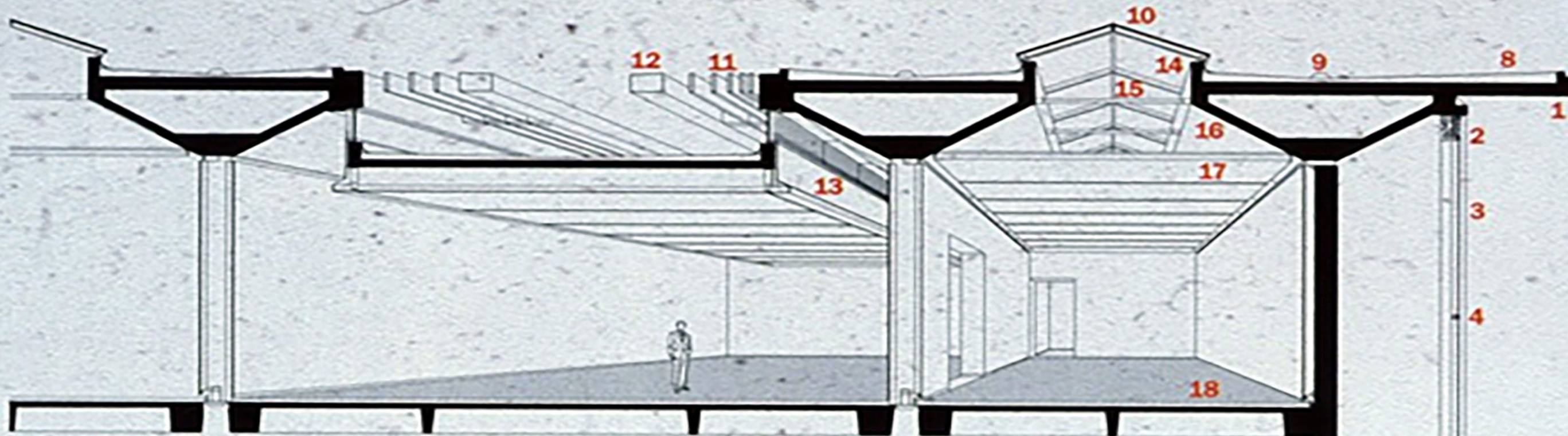




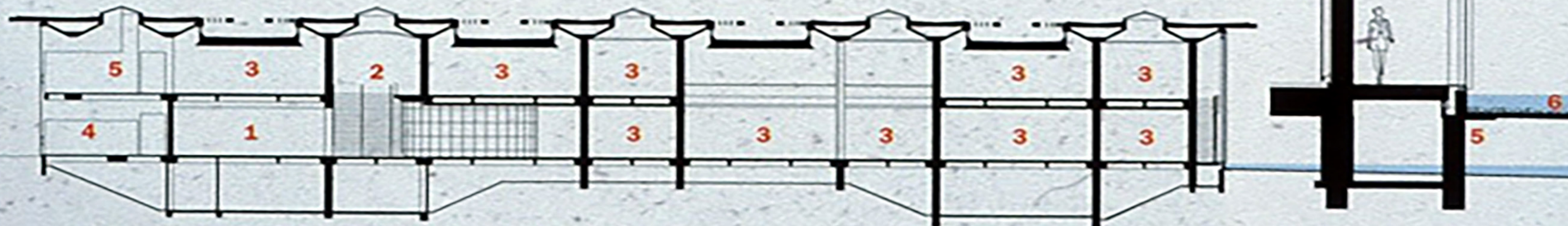




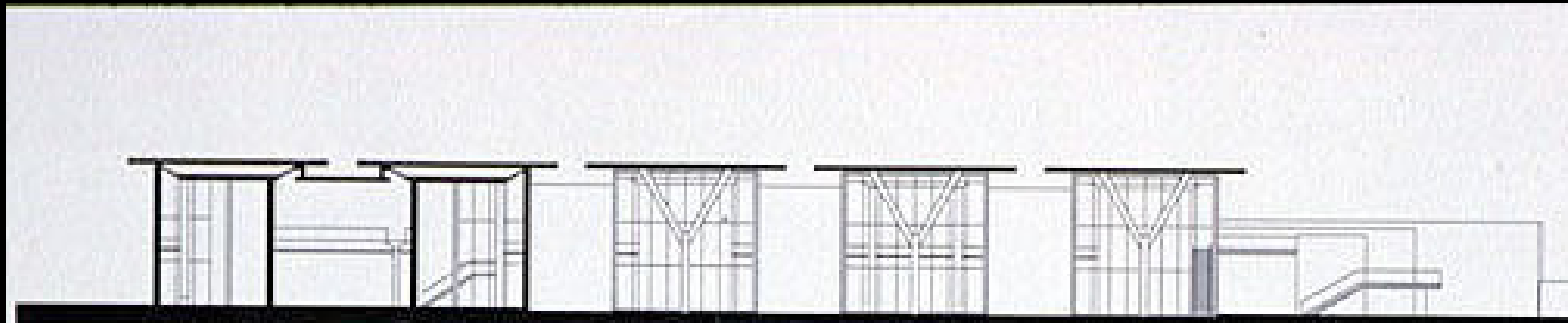
- |                          |                       |                       |                         |
|--------------------------|-----------------------|-----------------------|-------------------------|
| 1. Concrete              | 5. Precast concrete   | 10. Skylight          | 15. Fluorescent lamps   |
| 2. Aluminum louver panel | 6. Gravel             | 11. Aluminum louvers  | 16. Unfinished concrete |
| 3. Insulated glass       | 7. Stainless flashing | 12. GFRC tube         | 17. Translucent fabric  |
| 4. Aluminum mullion      | 8. Concrete roof      | 13. Clerestory window | 18. White oak planks    |
|                          | 9. Roof drain         | 14. Aluminum mullion  |                         |



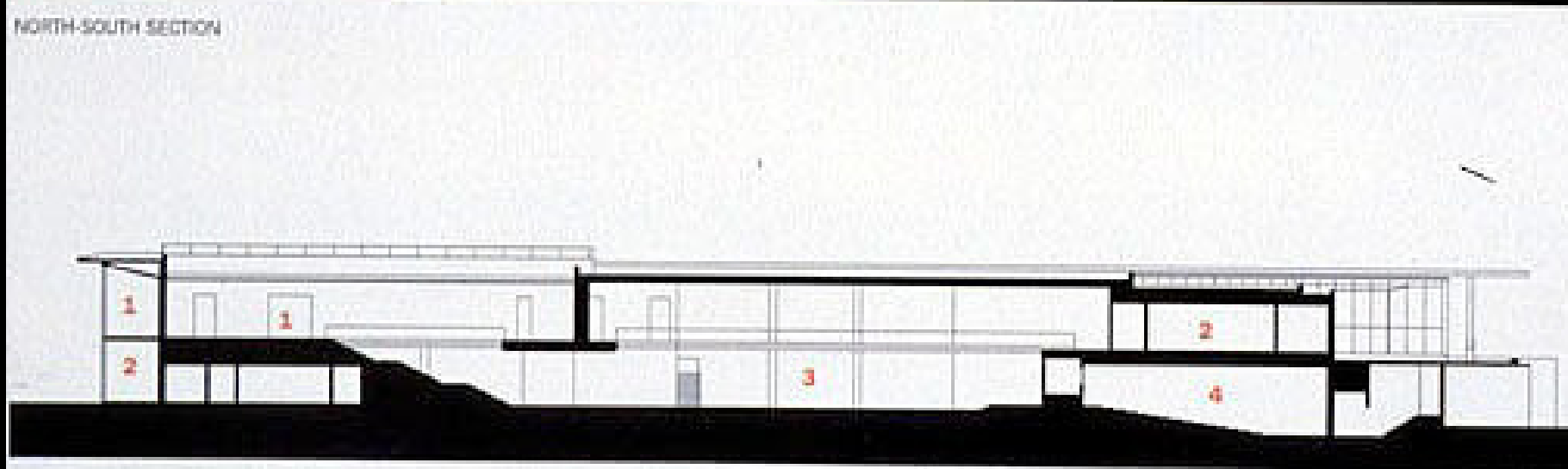
GALLERY PERSPECTIVE



SECTION THROUGH GALLERIES

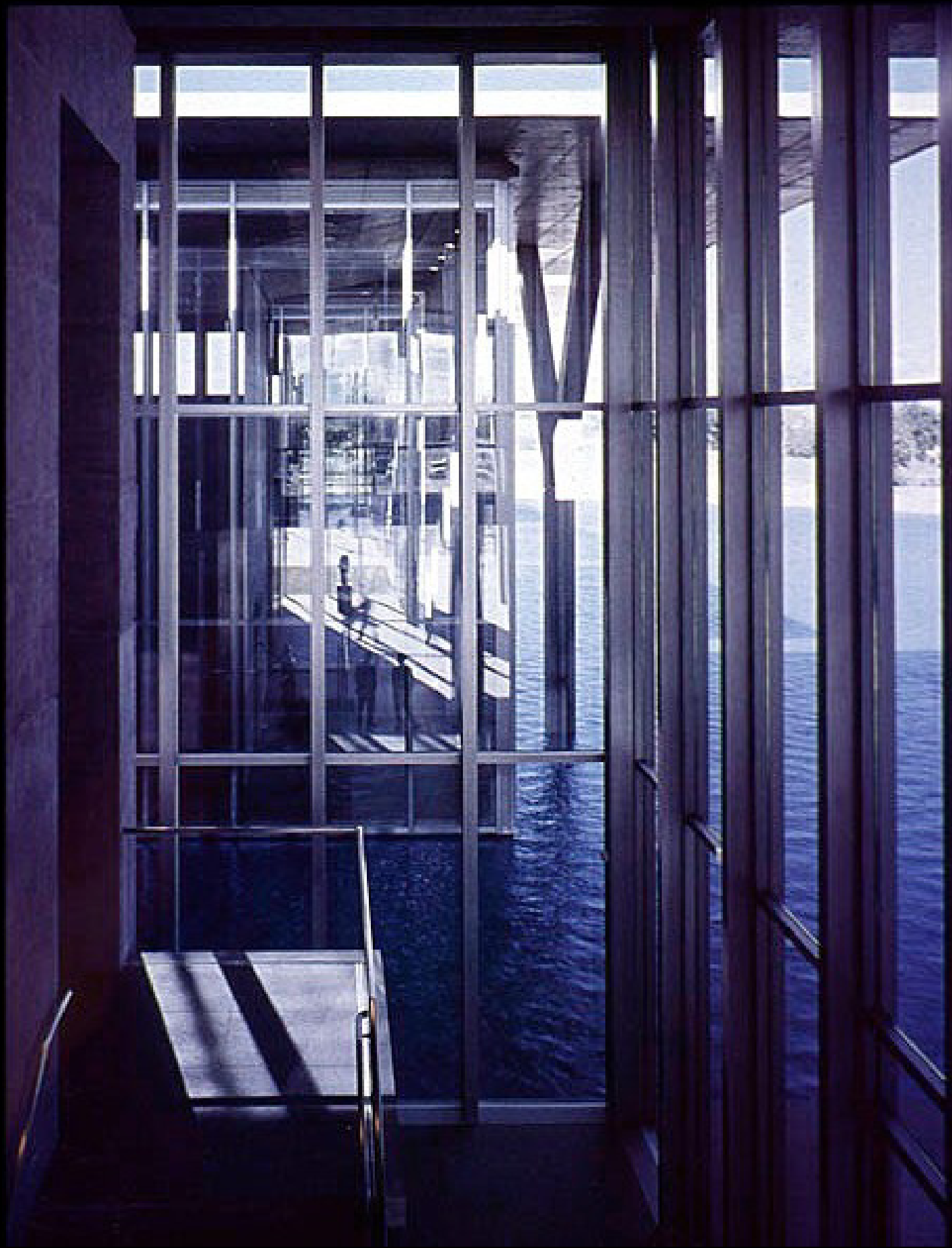


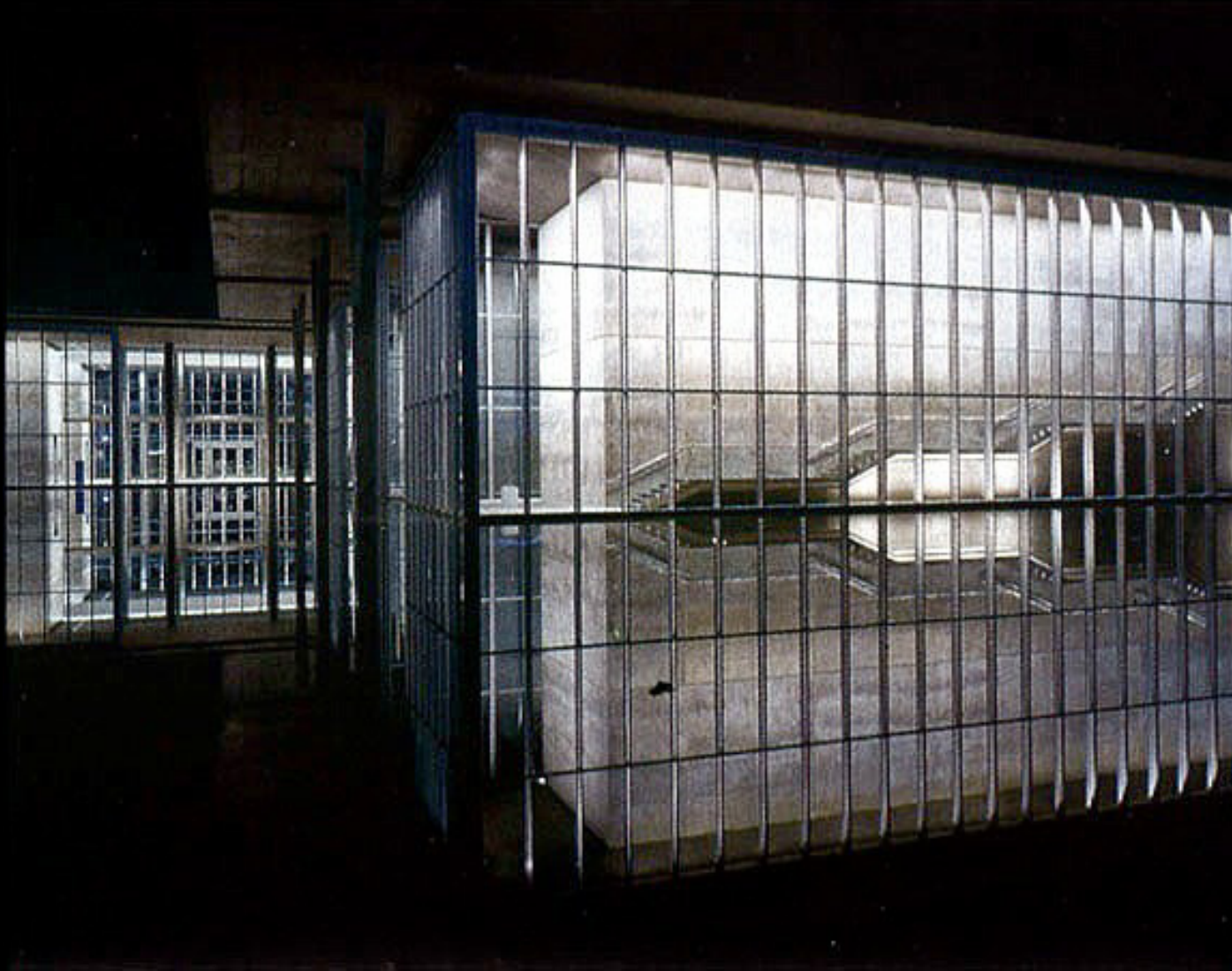
NORTH-SOUTH SECTION



EAST-WEST SECTION







The entry lobby (this spread and opposite, top) and grand stair (opposite, bottom) provide opportunities for people watching. Since opening in December, the museum has been a hit, drawing more people in a two-day period after Christmas than it had in any month the year before.



