

A dark gray silhouette of the United States map is centered on a white background. The map includes all 50 states, with Alaska and Hawaii shown in their standard relative positions. The entire composition is enclosed within a thick, ornate, dark brown wooden frame with intricate carvings.

**What is the role of individual
values in creative problem solving?**


A dark gray silhouette of the United States map is centered on a white rectangular background. The map includes all 50 states. The white background is framed by a thick, dark brown border with an ornate, carved pattern. The entire image is set against a dark, textured background.

Values:

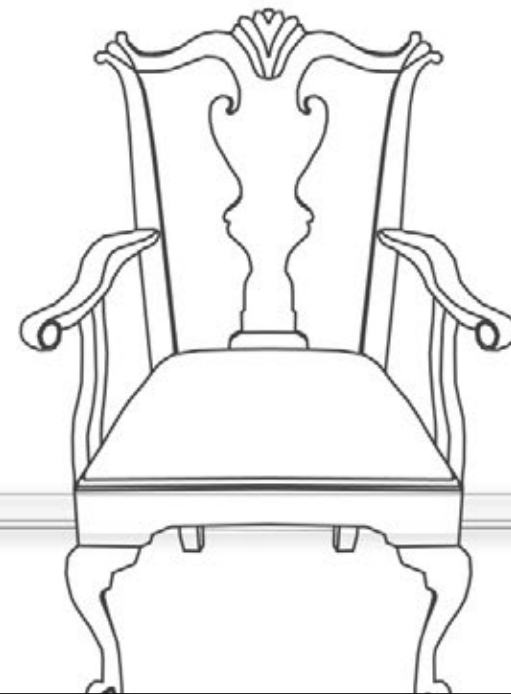
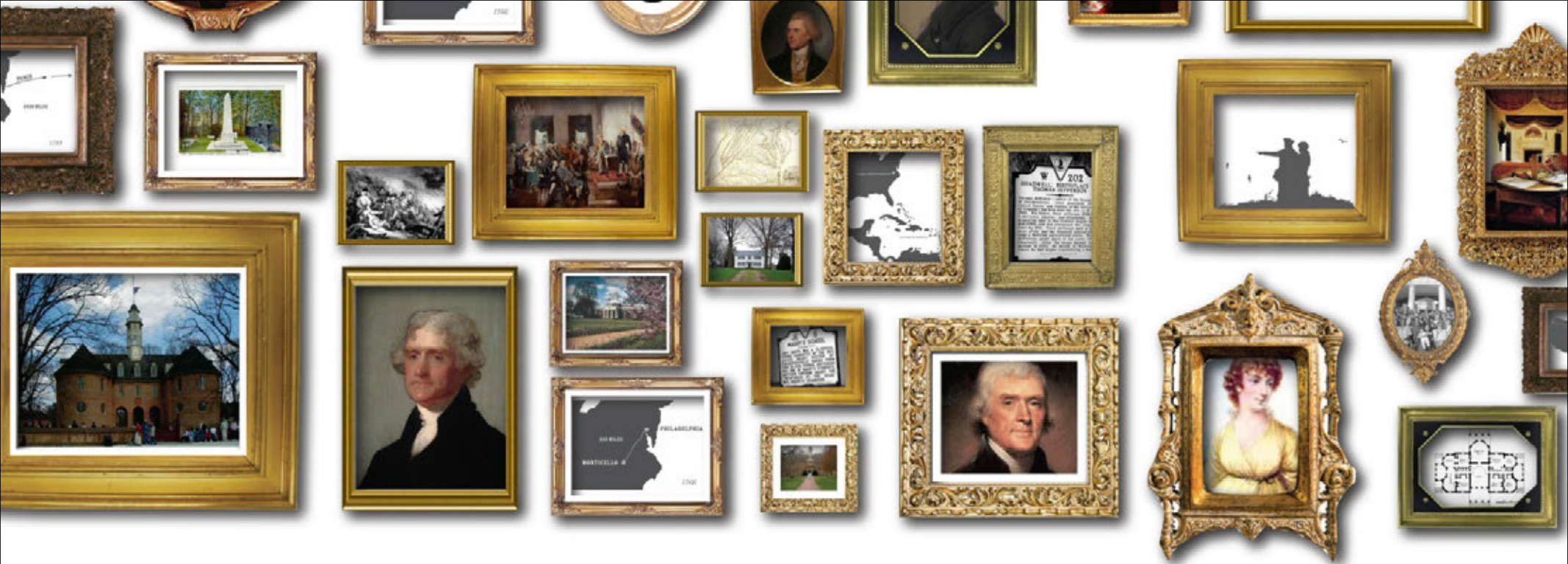
- 1. Standards that are used as a basis for judgement**
- 2. Ideals that are not immediately susceptible to rigorous proof**

A dark gray silhouette of the United States map, including Alaska and Hawaii, is centered on a white background. The map is framed by a thick, ornate, dark brown wooden frame with intricate carvings. The text "How do you acquire values?" is written in white serif font across the middle of the map.

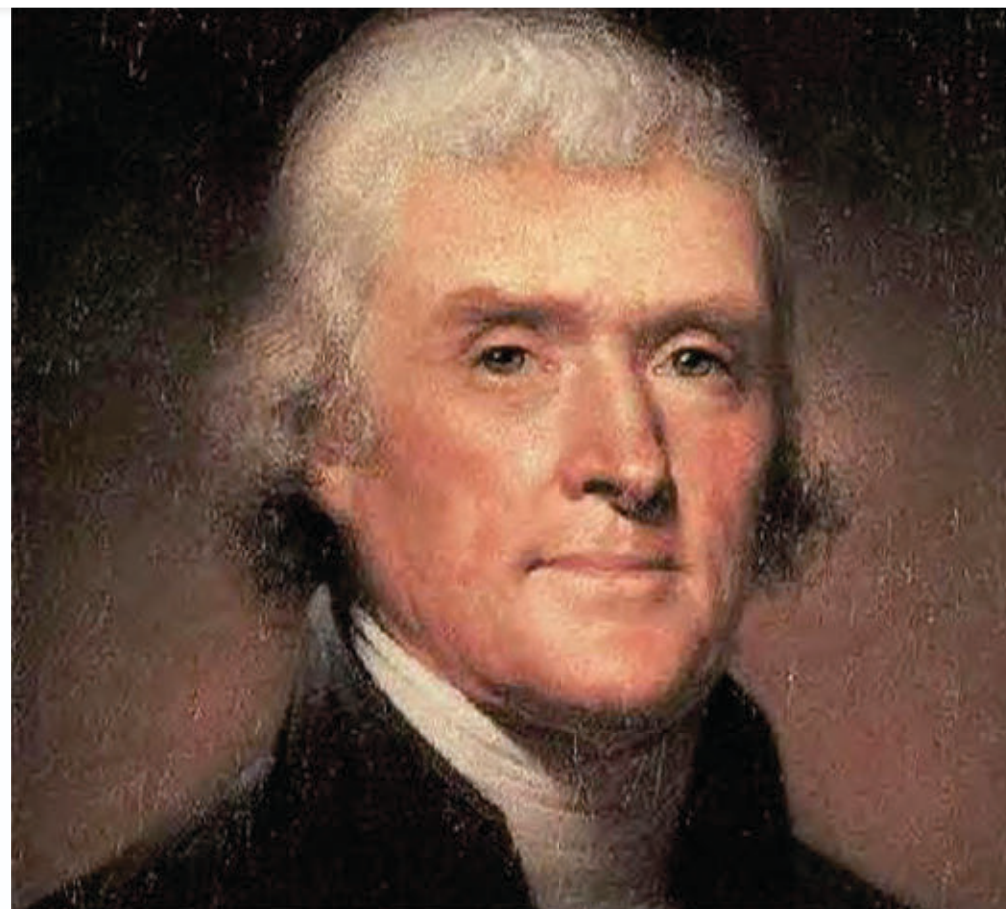
How do you acquire values?

A dark gray silhouette of the United States map is centered on a white rectangular background. The map includes all 50 states and the District of Columbia. The white background is framed by a thick, dark brown wooden border with intricate carvings. The entire composition is set against a dark, textured background with a repeating pattern of stylized leaves and vines.

**How do values help you decide what
problems to solve and how to
approach them?**



Creating a Geographical Vision for America - Thomas Jefferson



Born in 1743 in Shadwell, Virginia

He was also a surveyor.



*Peter Jefferson was a plantation owner,
member of the House of Burgesses, a judge
and a sheriff.*



*James Maury and the
College of William & Mary
provided Jefferson with
a classical education.*

JE 6
MAURY'S SCHOOL

JUST NORTH WAS A CLASSICAL
SCHOOL CONDUCTED BY THE REV.
JAMES MAURY, RECTOR OF
FREDERICKSVILLE PARISH FROM
1754 TO 1769. THOMAS JEFFERSON
WAS ONE OF MAURY'S STUDENTS.
MATTHEW FONTAINE MAURY, THE
"PATHFINDER OF THE SEAS,"
WAS MAURY'S GRANDSON.

VIRGINIA STATE LIBRARY 1965

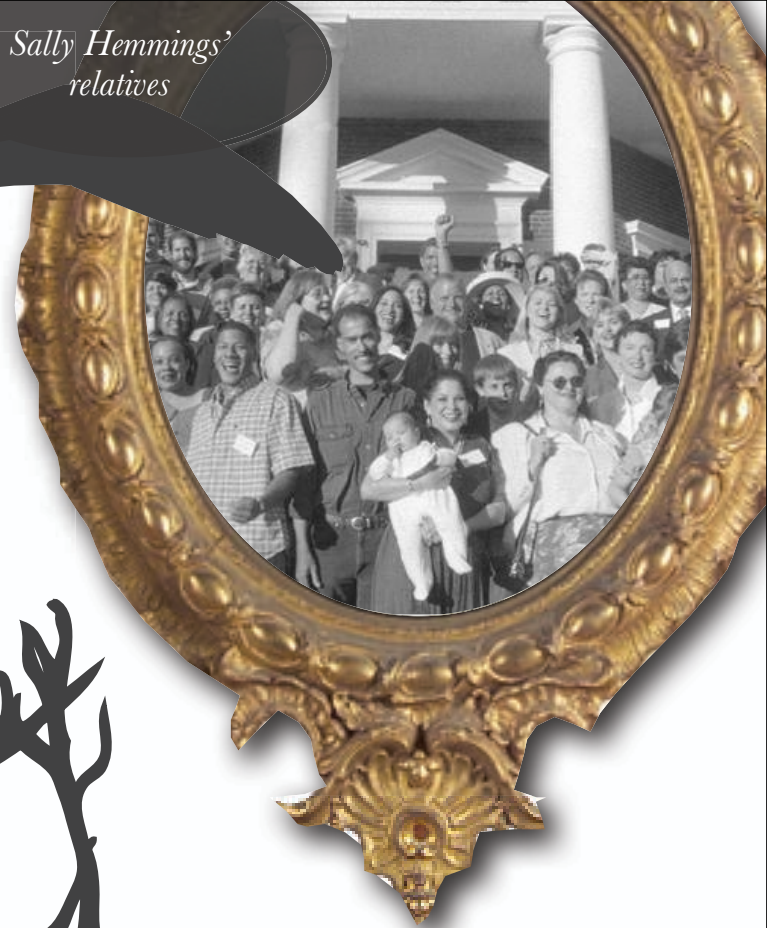






*‘Laboring in the
earth kept a man’s
morals free from
corruption.’*

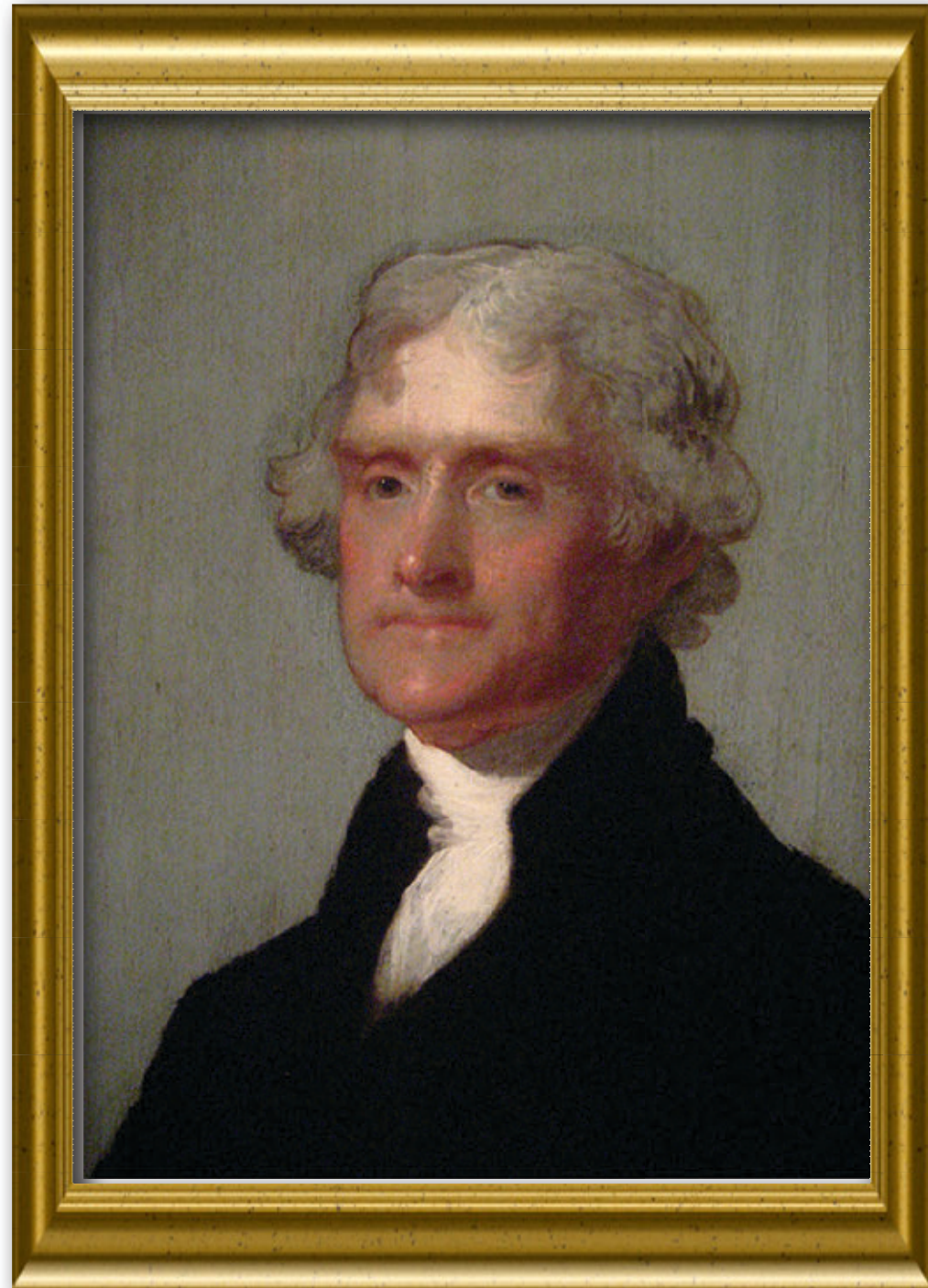
*Sally Hemmings's
relatives*



Martha Skelton



1777-1778
*Thomas Jefferson,
Governor of the
Commonwealth (State)
of Virginia*





*In 1775, at age 32,
Jefferson was elected
to the Continental
Congress*





*Jefferson never served
in the Continental
Army and would later
be accused of
cowardice.*

Martha's Grave



448. TOMB OF THOMAS JEFFERSON, MONTICELLO, CHARLOTTESVILLE, VA.

150109





*In 1797 Jefferson
became Vice-President
under John Adams*





The image is a composite. The background is a large, ornate gold frame containing a portrait of Meriweather Lewis in profile, facing left. The portrait is set within an octagonal mat. To the left of the portrait is a black silhouette of a rooster. Overlaid on the lower-left portion of the portrait is a dark, semi-transparent speech bubble containing white text.

*Meriweather Lewis
was Jefferson's
longtime secretary.*



Republican Party

Federalist Party

*I like rural life, agriculture
and value the individual*

*I like cities, commerce and
centralized government*



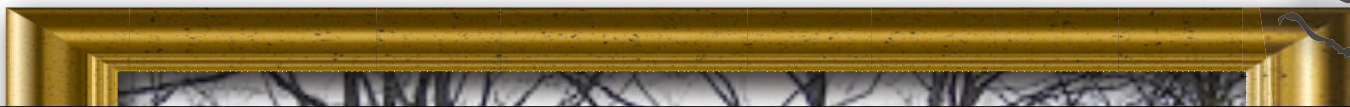


Jefferson's Values

1. Individual freedom of 'citizens'



Jefferson's father was a prominent surveyor as well as a plantation owner.

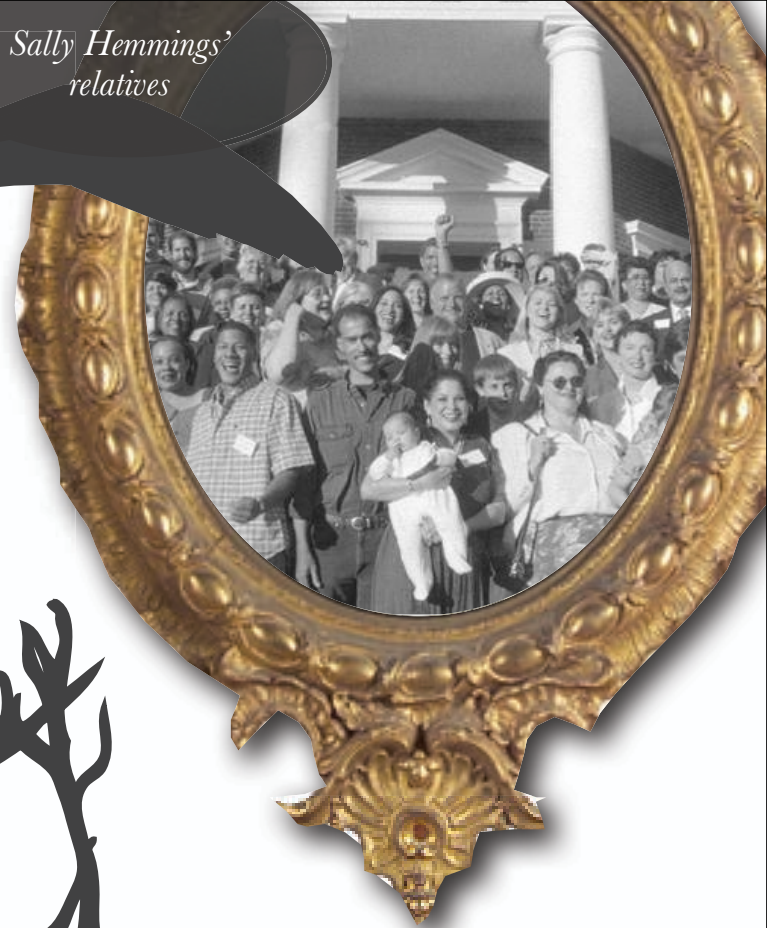




Jefferson's Values

2. Slave owner

Sally Hemmings' relatives



Martha Skelton





Jefferson's Values

3. Acquisition

*Jefferson inherited
10,000 acres, the land for
Monticello upon his
father's death.*





Jefferson's Values

4. Land hungry

*Tobacco farming, a
common crop in
Virginia, was land
intensive.*





Jefferson's Values

5. Nature



*Jefferson never served
in the Continental
Army and would later
be accused of
cowardice.*



Jefferson's Values

6. Invention





Jefferson's Values

7. Power of knowledge



Jefferson's Values

8. Evils of financial profiteering



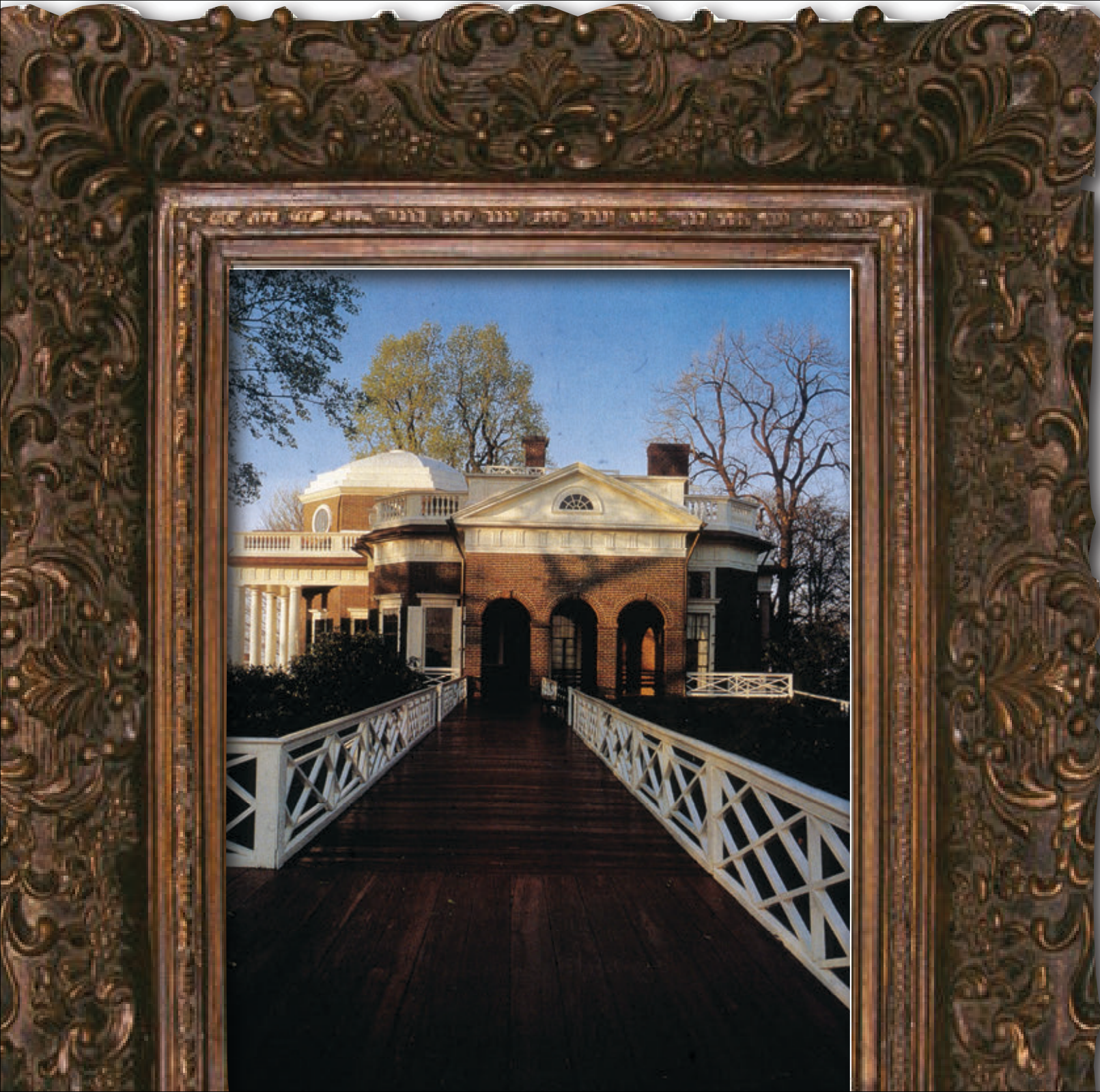
Jefferson's Values

9. Anti-urban

*'I view great cities as a pestilential
to the morals, the health and the
liberties of man' (Brodie p.72)*













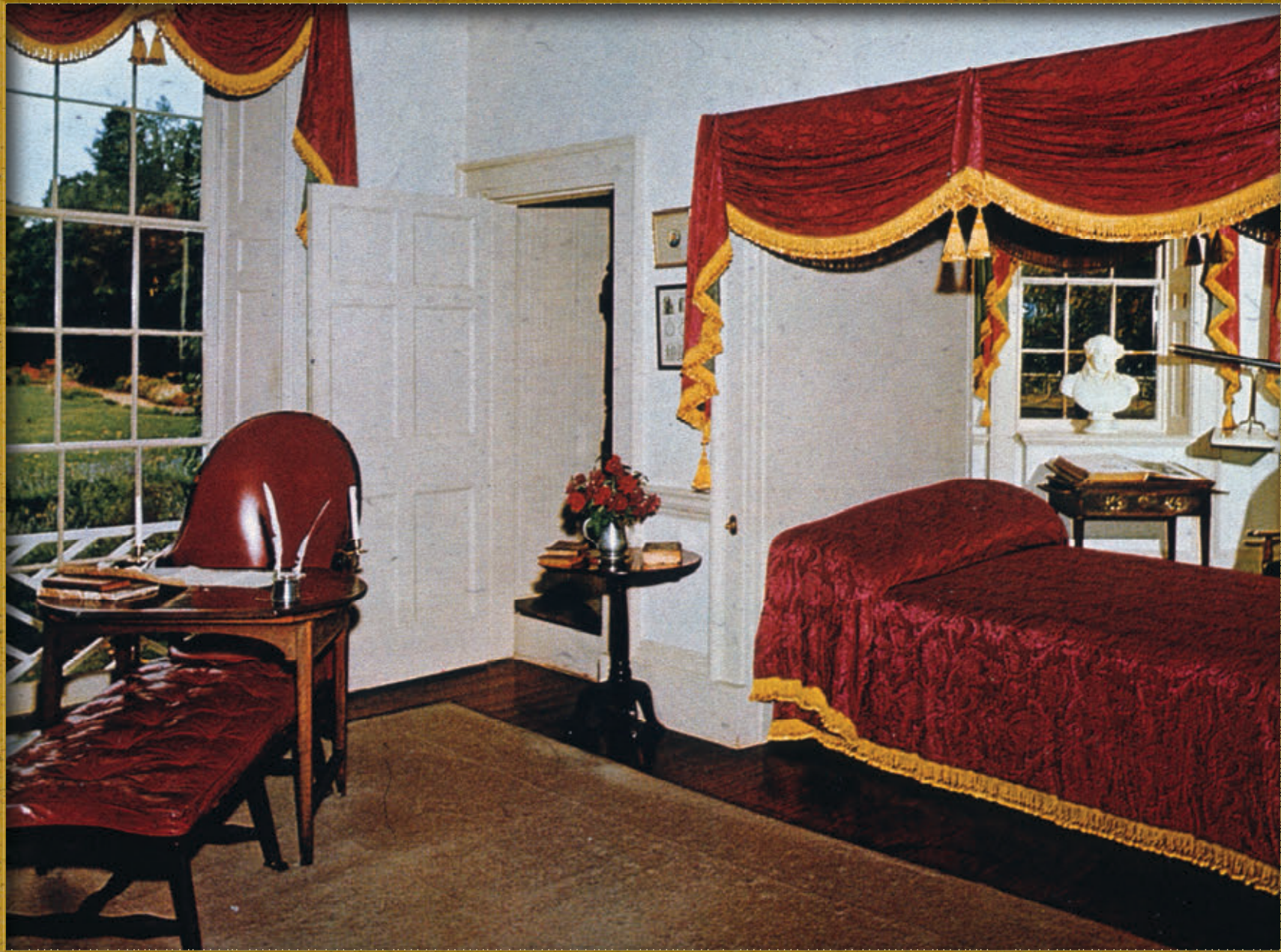








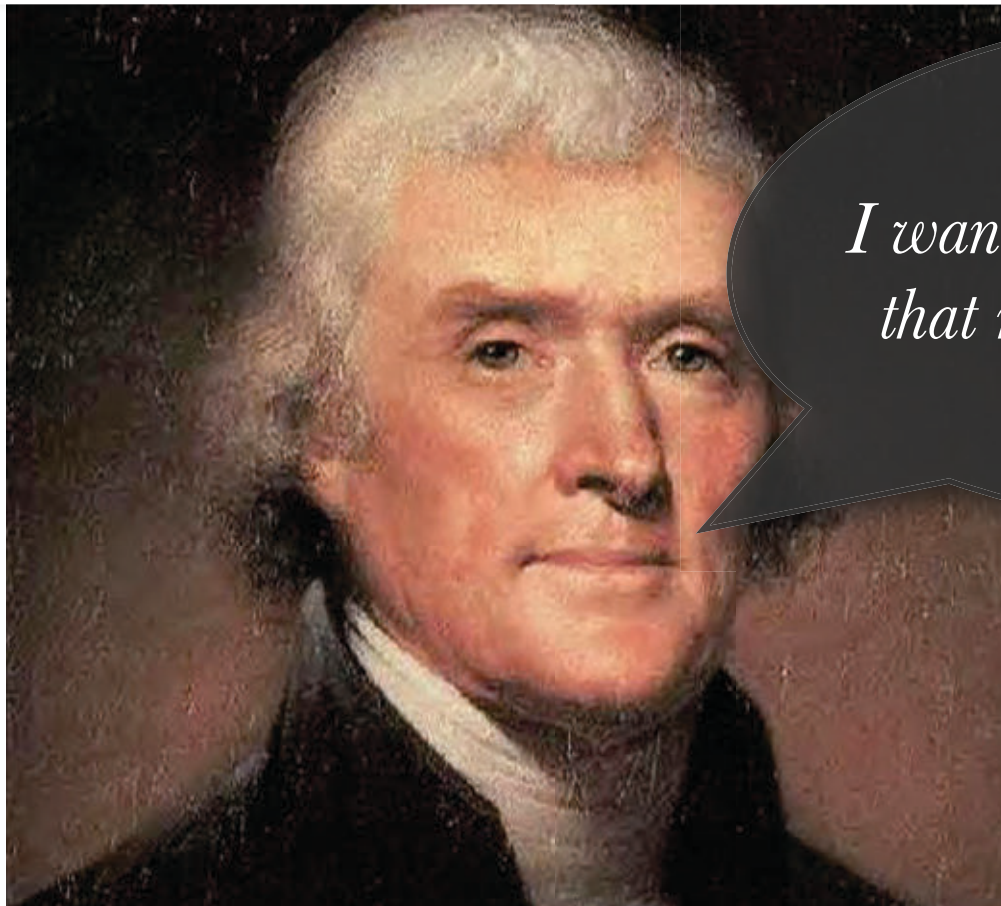






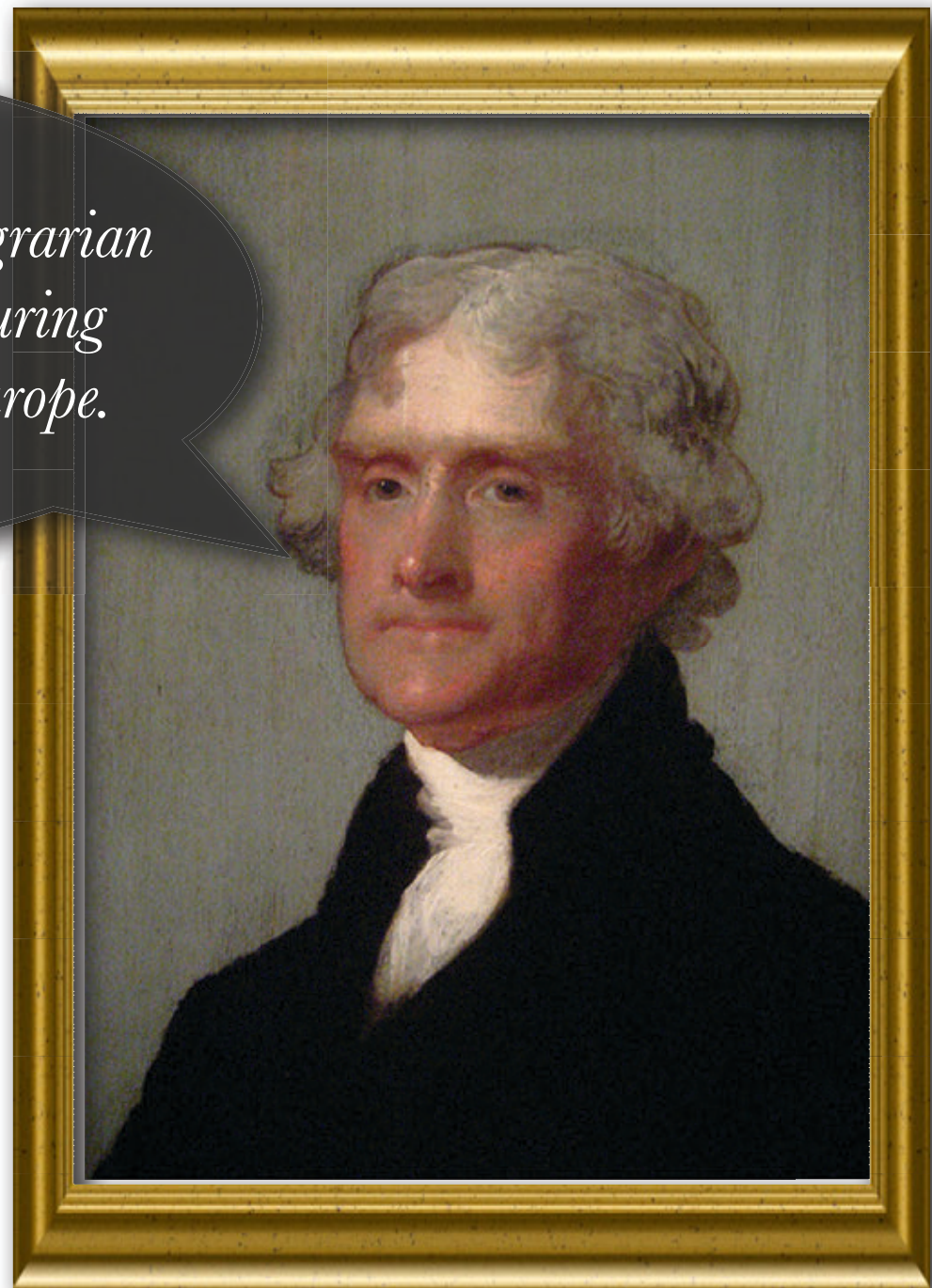






*I want the U.S. to be a country
that rivals European powers.*

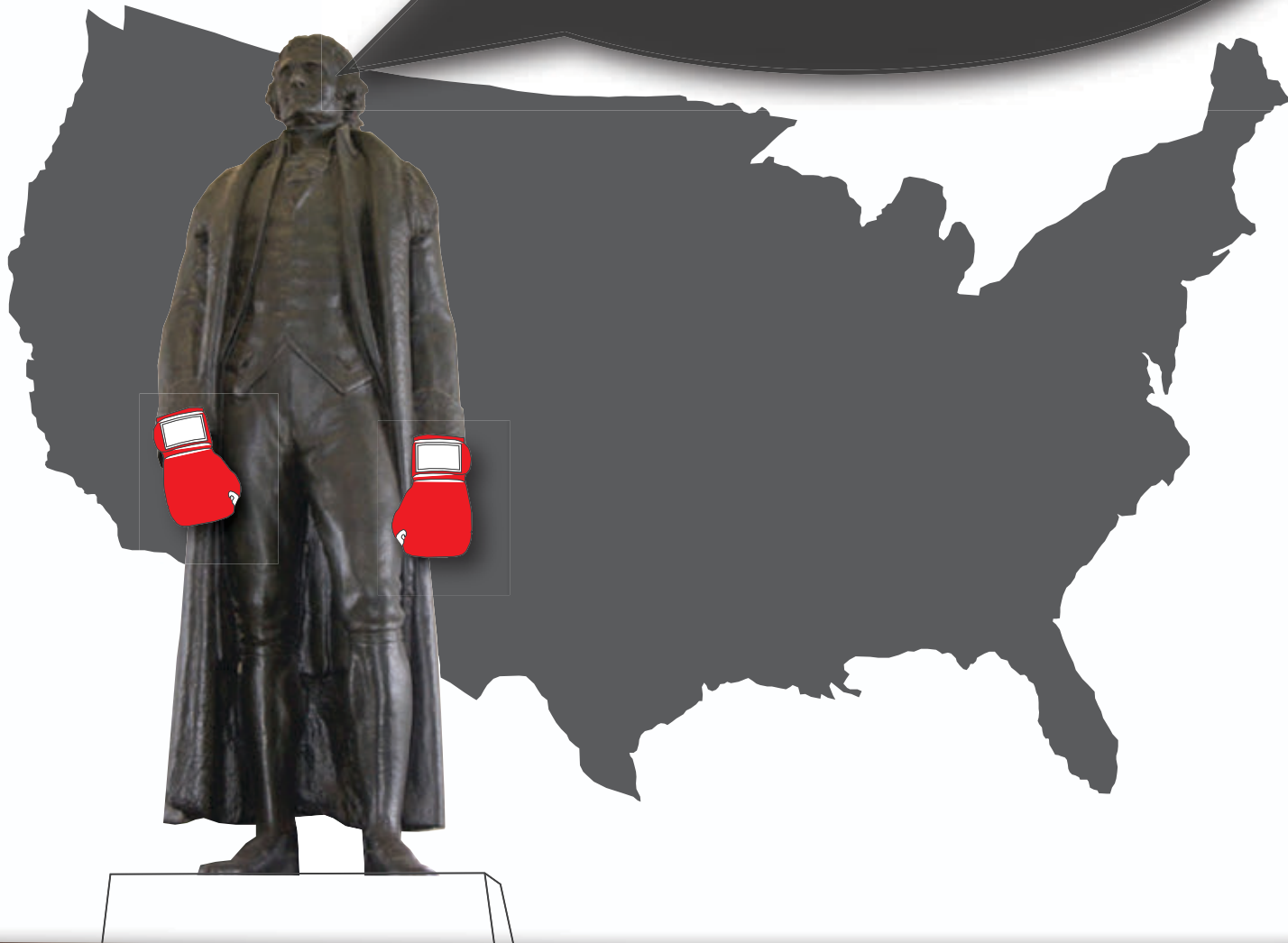
*The U.S. should be an agrarian
society- leave manufacturing
and the urban life to Europe.*



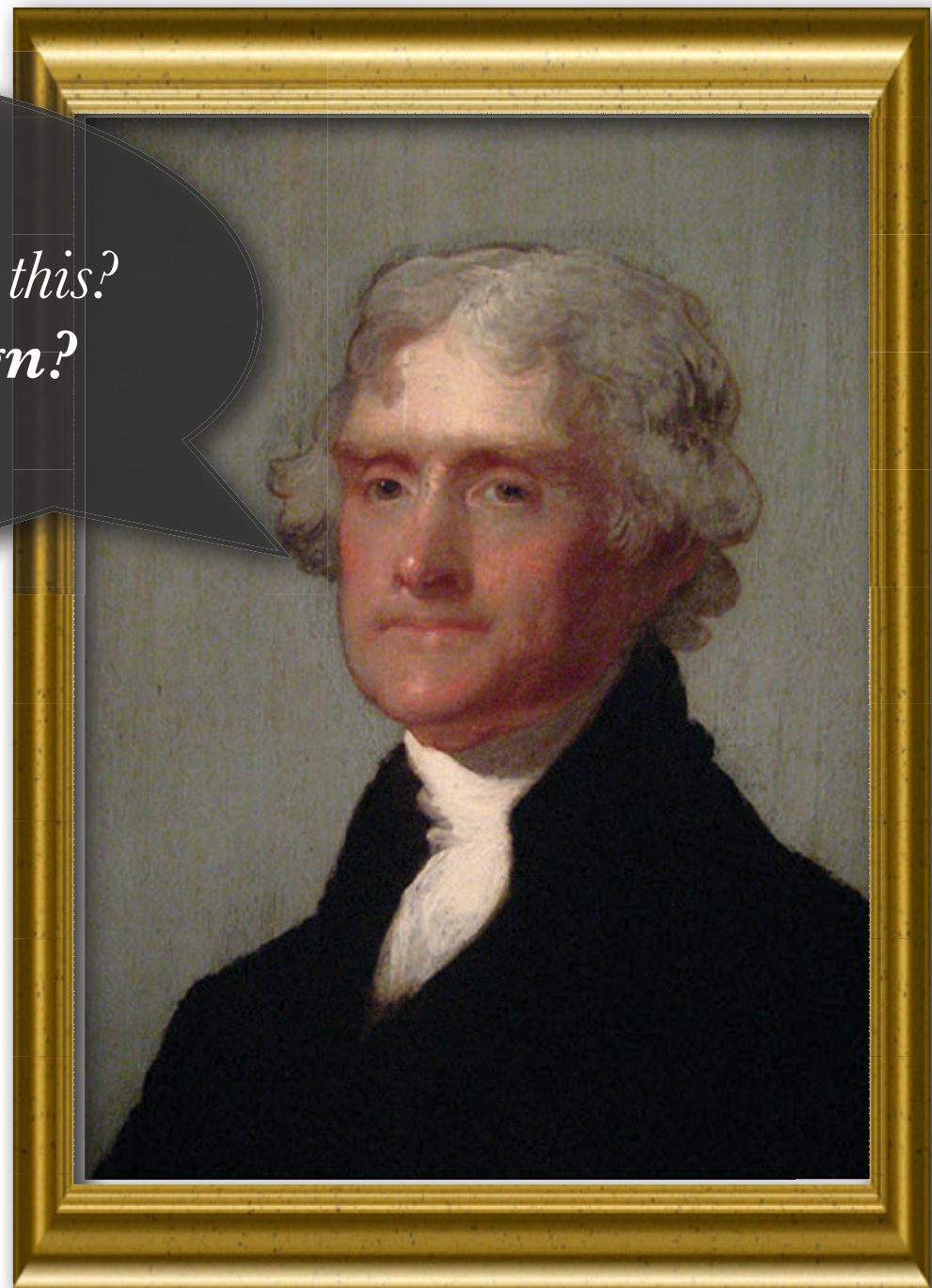
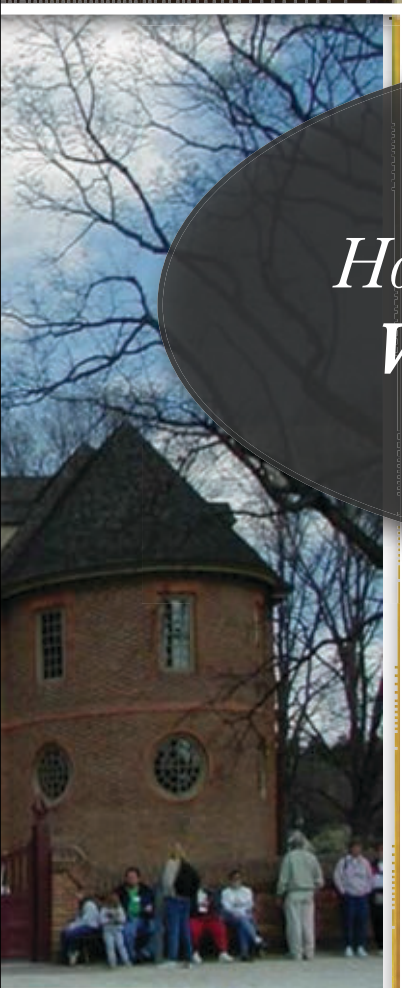
*We should expand
agriculture and the fur
trade.*



We should expand U.S. territory to reach from the Atlantic to the Pacific Ocean- we should dominate North America.



*How do I propose to do this?
What is my design?*

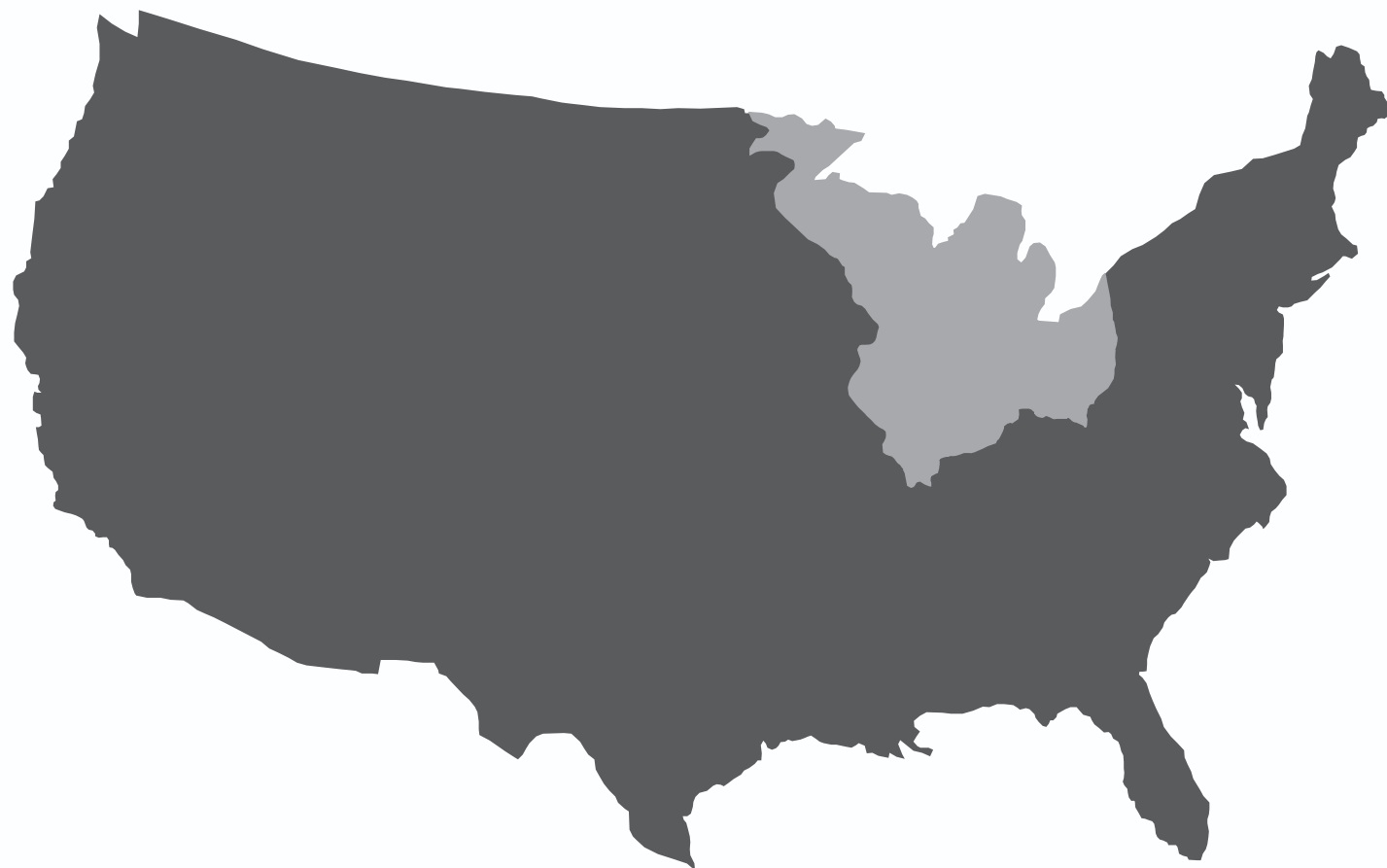


A silhouette map of the United States is centered on a white background. The map is dark gray, except for the eastern half, which is highlighted in a lighter gray. The map is framed by a dark, ornate wooden border with intricate carvings.

*1. Acquire new cheap land
in the West for the U.S.*



2. Louisiana Purchase



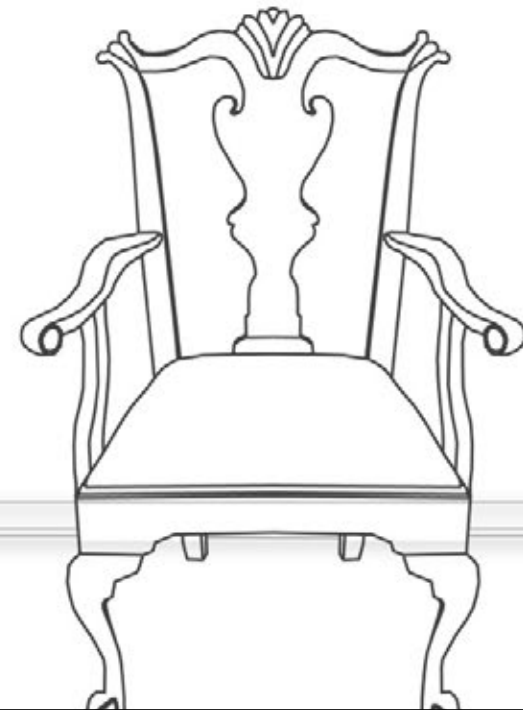
3. Northwest Ordinance & Territories



4. Explore the West

5. Document flora, fauna and learn about Indians





Lessons from Thomas Jefferson