



robert moses



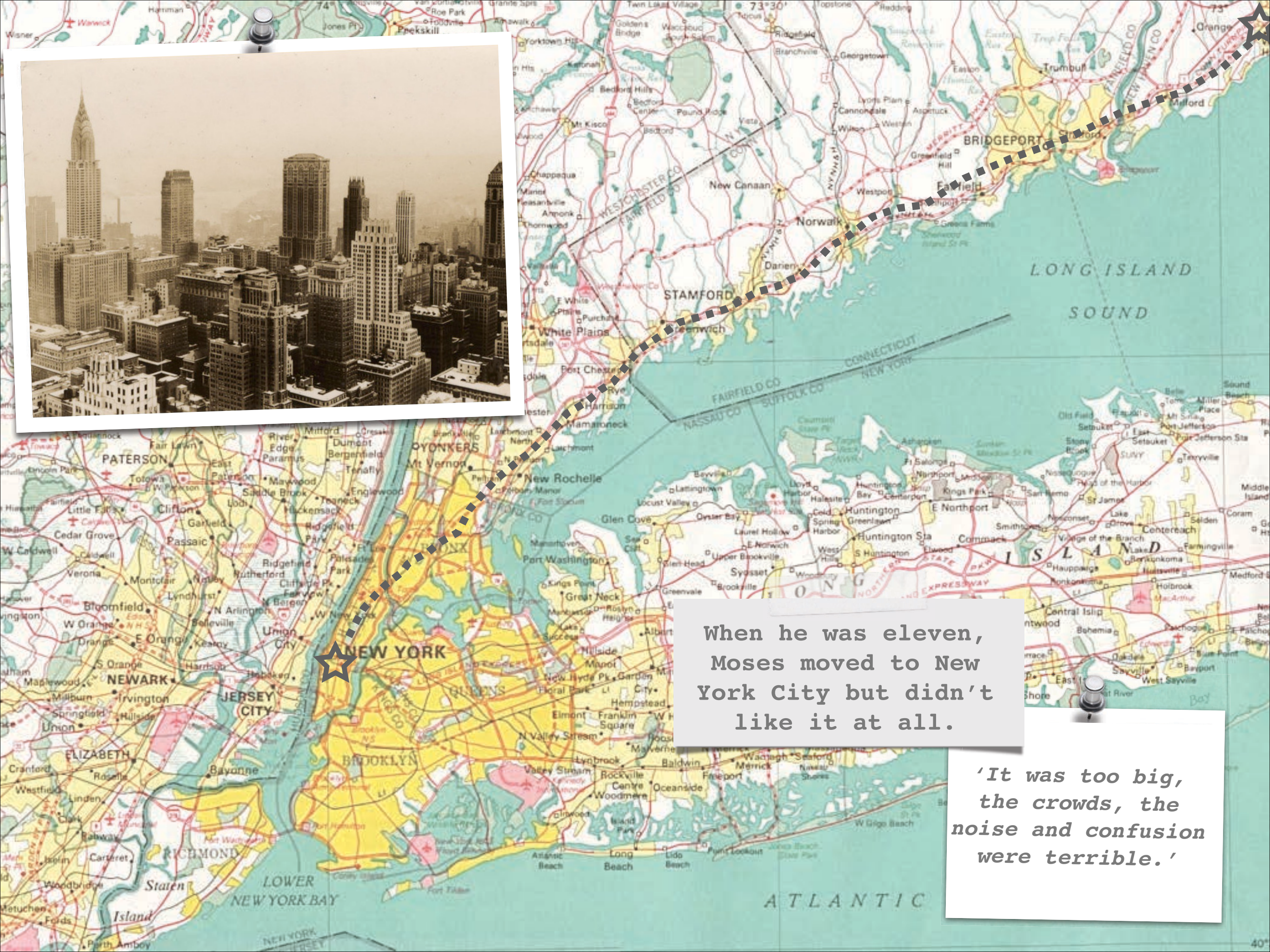
Moses' parents, Emmanuel and Bella.

-Emmanuel owned a department store in New Haven

-Bella was a well educated social activist

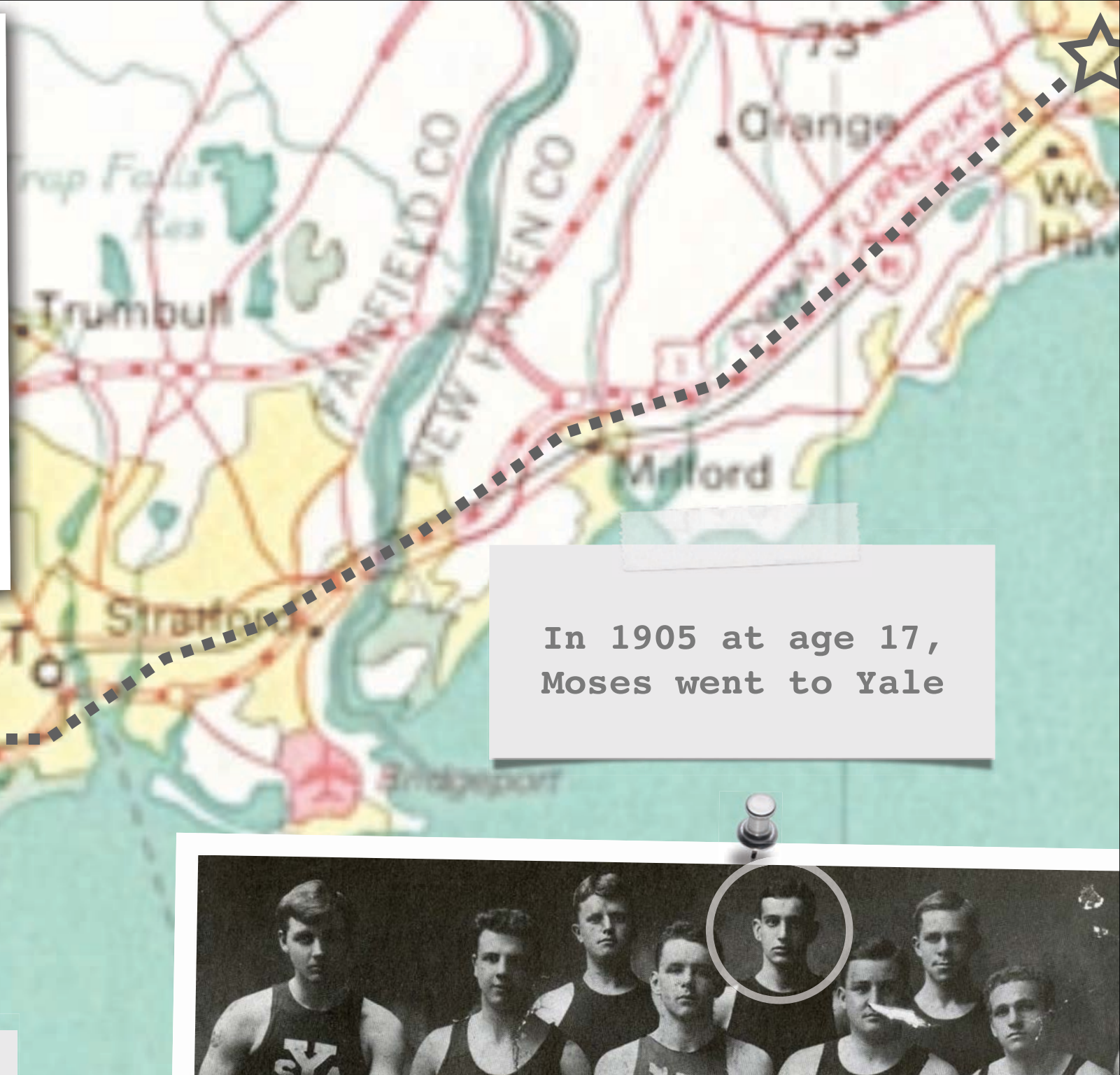


Robert Moses was born in 1888 in New Haven



When he was eleven,
Moses moved to New
York City but didn't
like it at all.

*'It was too big,
the crowds, the
noise and confusion
were terrible.'*



In 1905 at age 17,
Moses went to Yale

He was an outsider because
he was Jewish and two
years younger than most
students but he was an
excellent athlete (swimmer)
and a natural leader.





BROAD STREET & SHELDONIAN THEATRE

At Oxford he studied politics.
His thesis was, 'The Civil
Service of Great Britain'.

In 1905, at age 21,
went to graduate
school at Oxford

*In 1912, at age 24,
Moses returns an
idealist to NYC, a
city heavily
influenced by the
Progressive
Movement in the
1890's.*



*He took a job with the Bureau
of Municipal Research, an
advocate for good government
and took up the fight for the
'little guy'.*

Moses believed that
parks on Long
Island would serve
as the lungs for a
growing, congested
city

He thought this
a necessity for a
city larger and
more dense than
any other in the
U.S.

Parks on Long Island

Moses' dream for parks available
for everyone in NYC reflects his
own childhood aversion to density

Parks on Long Island

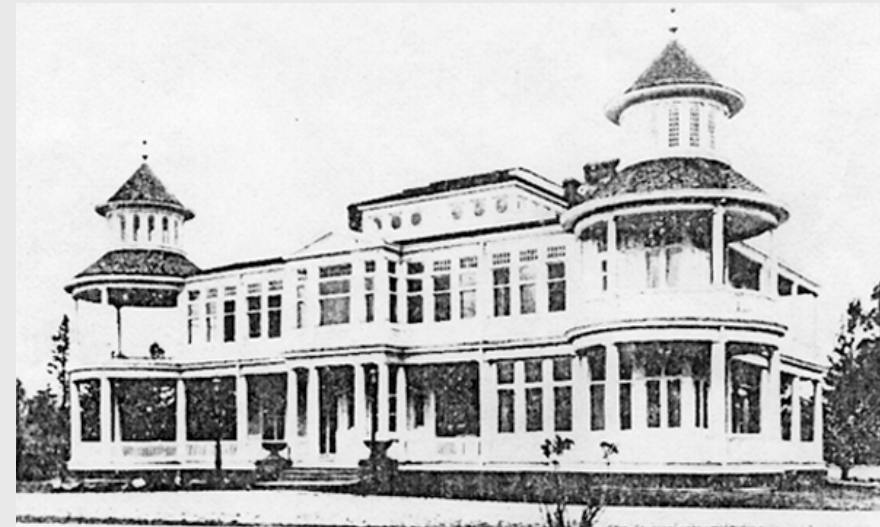
Northshore: rocky, rugged

Lakes & Forest

Southshore: sandy beaches

Unfortunately, while there was beautiful and plentiful land on Long Island, it was 'locked up' in the private hands of wealthy robber barons, trapping NYC.

The Taylor Estate was a perfect example of this. It was a 1500 acre estate that came up for sale when its owner, George C. Taylor died.



The Taylor Mansion as it Appeared Prior to Demolition in 1933



George C. Taylor Estate

Wealthy members of the Timber Point Club formed a corporation, bought it for \$250,000 and stocked it with game for hunting.



Moses purchased a little boat called 'The Bob' & started exploring the bays and inlets.

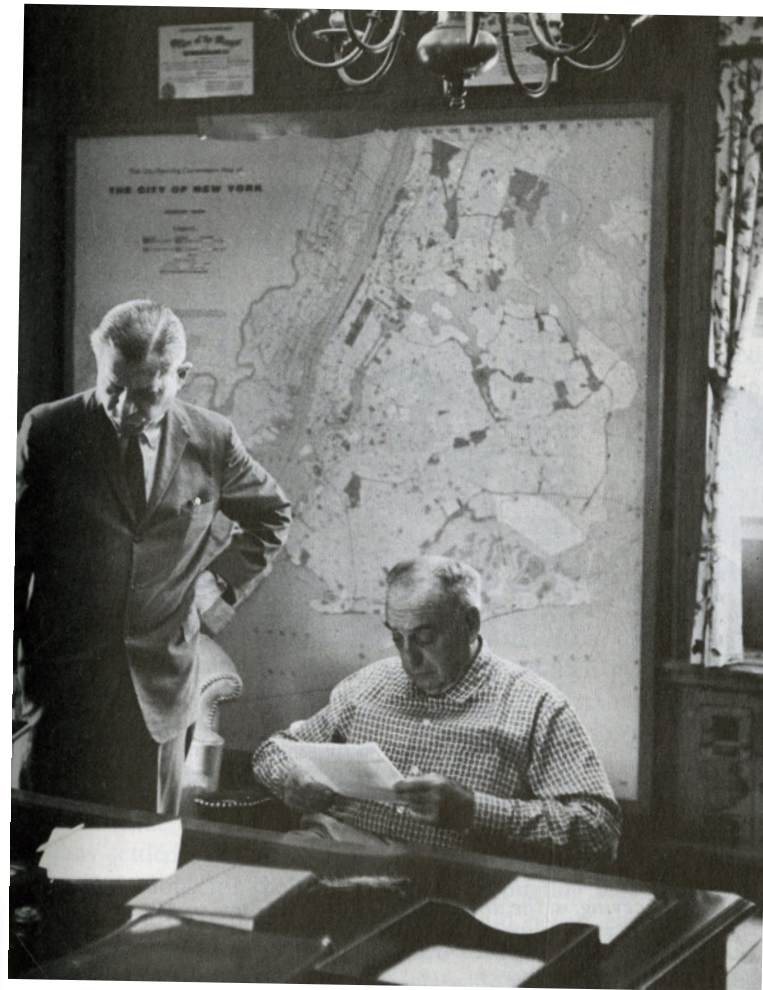


In 1921 Moses began to visit friends on Long Island and fell in love with it.



Moses' Park Vision

In 1921 Moses began to visit friends on Long Island and fell in love with it.



Later that year he solicited support for his vision from the new governor, Al Smith, giving him a guided tour of Long Island.



In 1922 Moses wrote a state park plan for New York



In 1923, at age 35, Smith made him the president of the Long Island State Park Commission for which he helped draft parks bills in the state legislature. This signaled his transformation from an idealist to a power broker.



Kingsland Macy, Moses' chief adversary



George C. Taylor Estate

Ultimately Moses defeated Kingsland Macy and took the Taylor Estate by condemnation. He did this by striking deals with judges, having Al Smith appear as a witness, appeals, Moses' lawyers not showing up for trial, etc..

Despite losing, Macy gained tremendous respect for Moses and the two worked closely together for the next 30 years.

**Hecksecher Park
(Taylor Estate)
dedication**



Taylor Estates was Moses' first real use of power. It also required that he:

- 1-make the ends justify the means
- 2-work with crooked people
- 3-bend/break the law

Moses was successful because he established alliances/coalitions, he was willing to negotiate and he had a strategy.

Hecksecher Park

ATLANTIC

OCEAN

Moses continued to acquire land for his parks and parkways. This came about in three different ways:

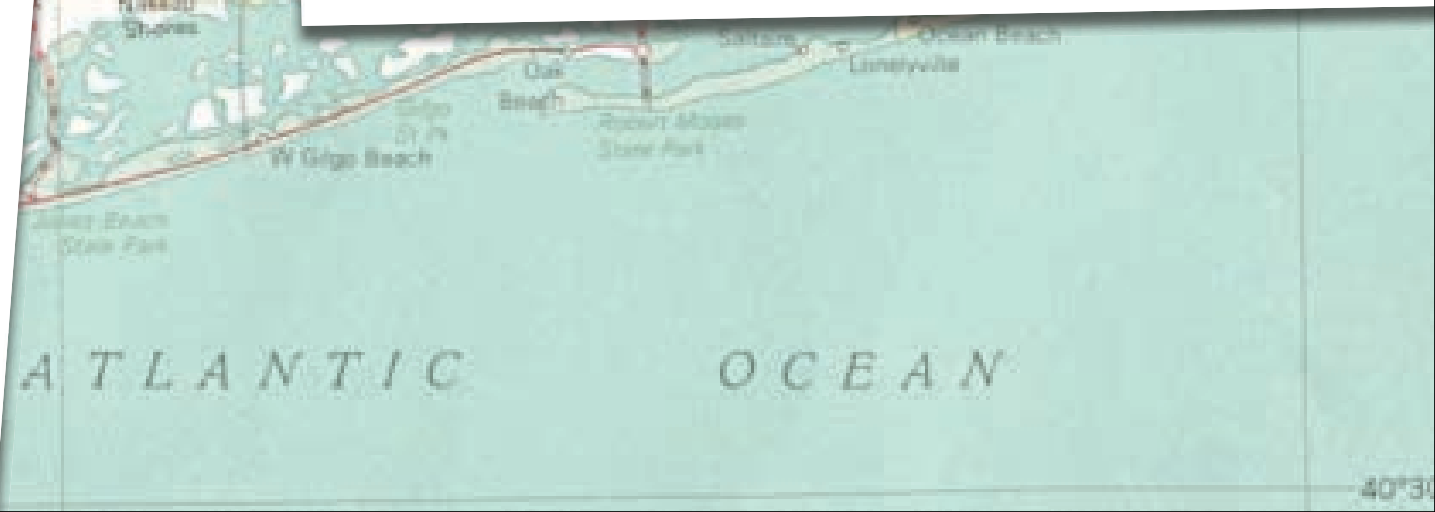
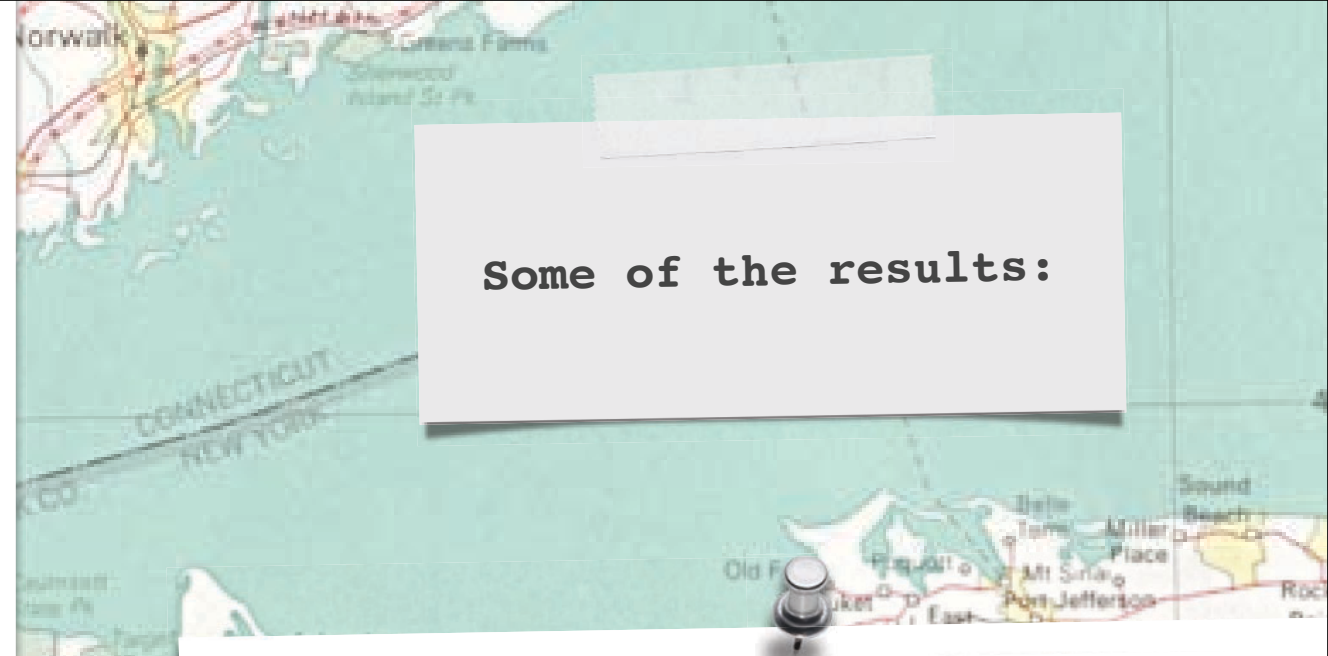
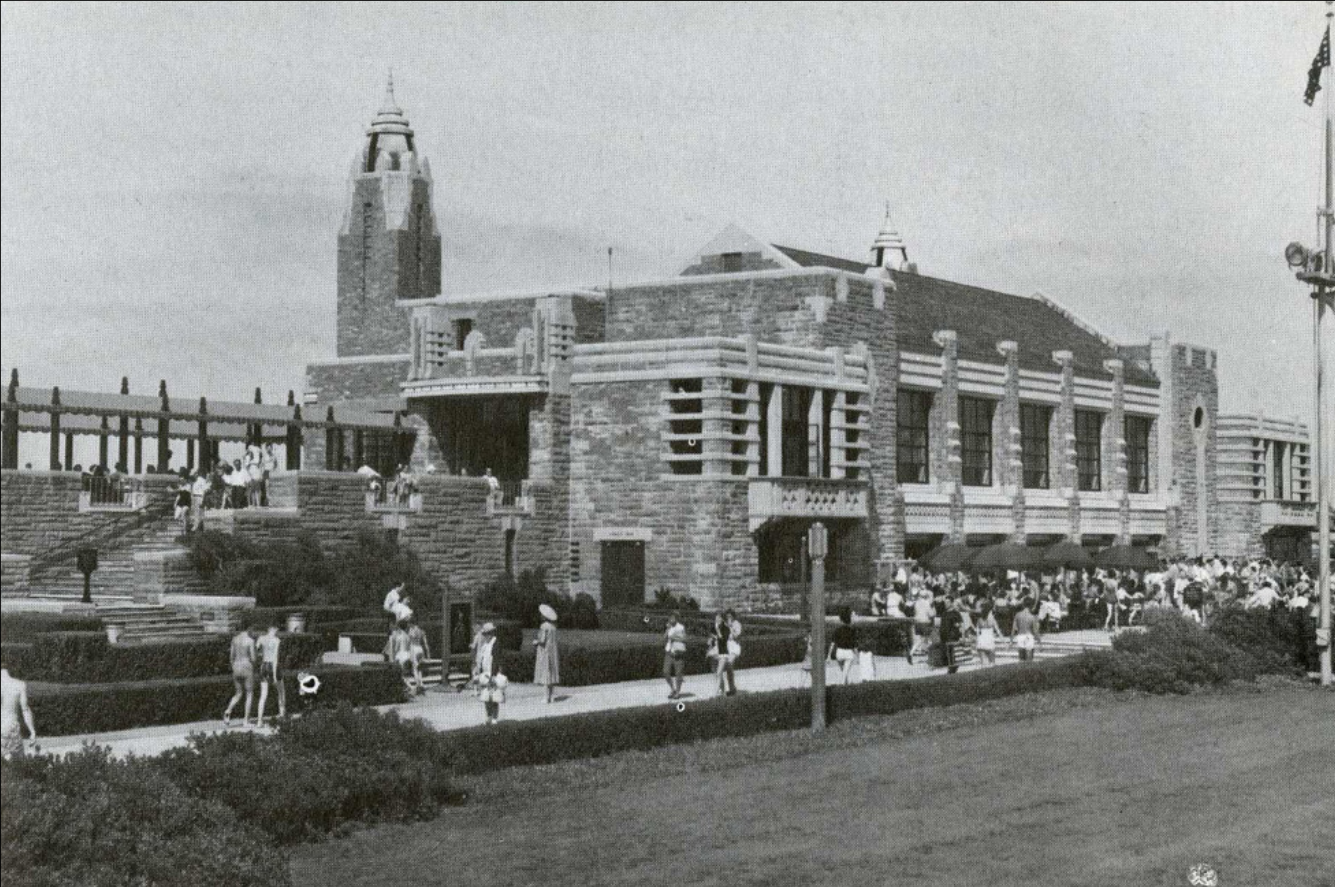
Landowners donated land to increase their own property value.

Coalitions with crooked local municipalities who used their funds to buy land and give it to Moses in exchange for contracts given to the right people.

Strategic use of land already belonging to the state

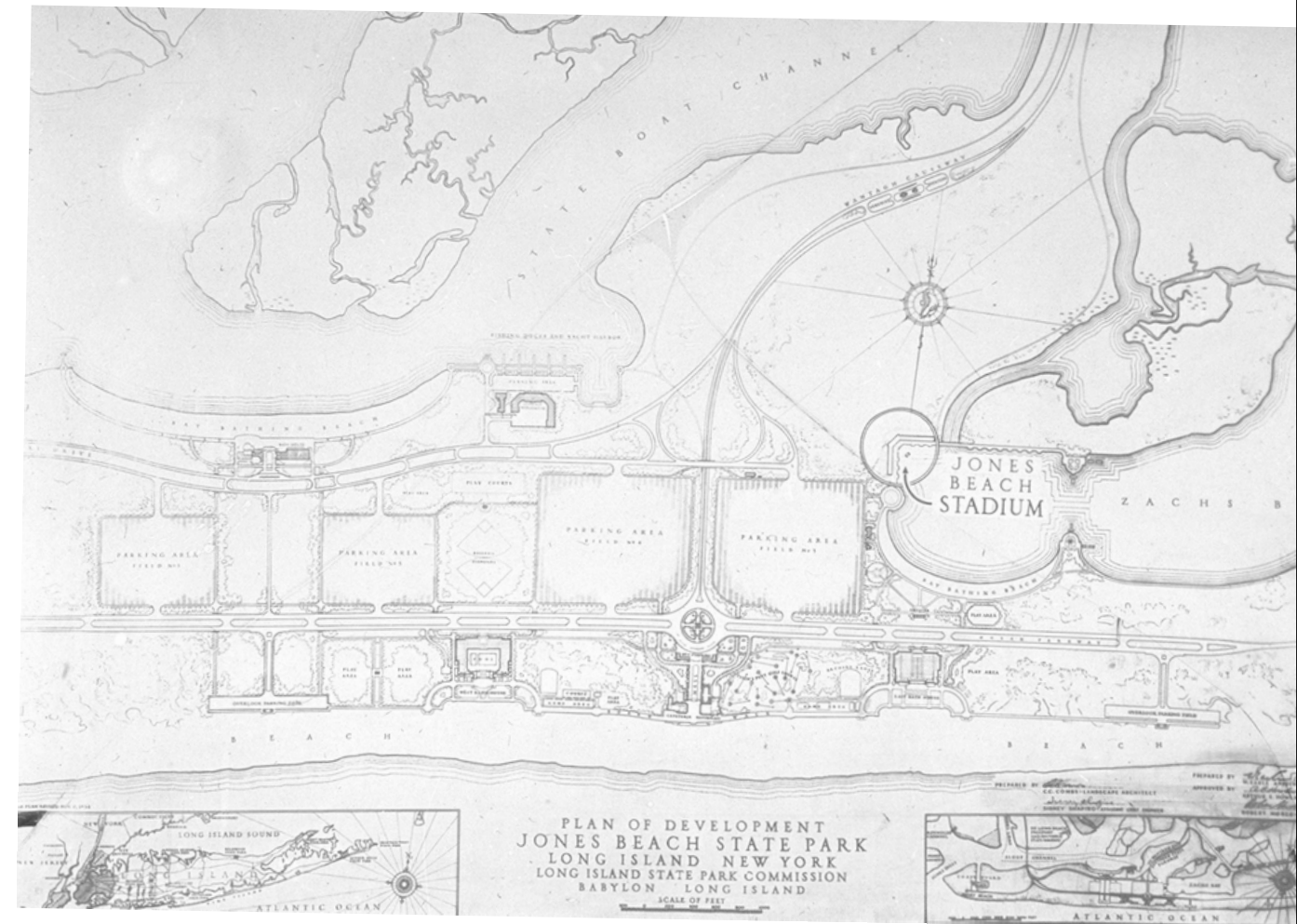


Hecksecher Park



Robert Moses wins.



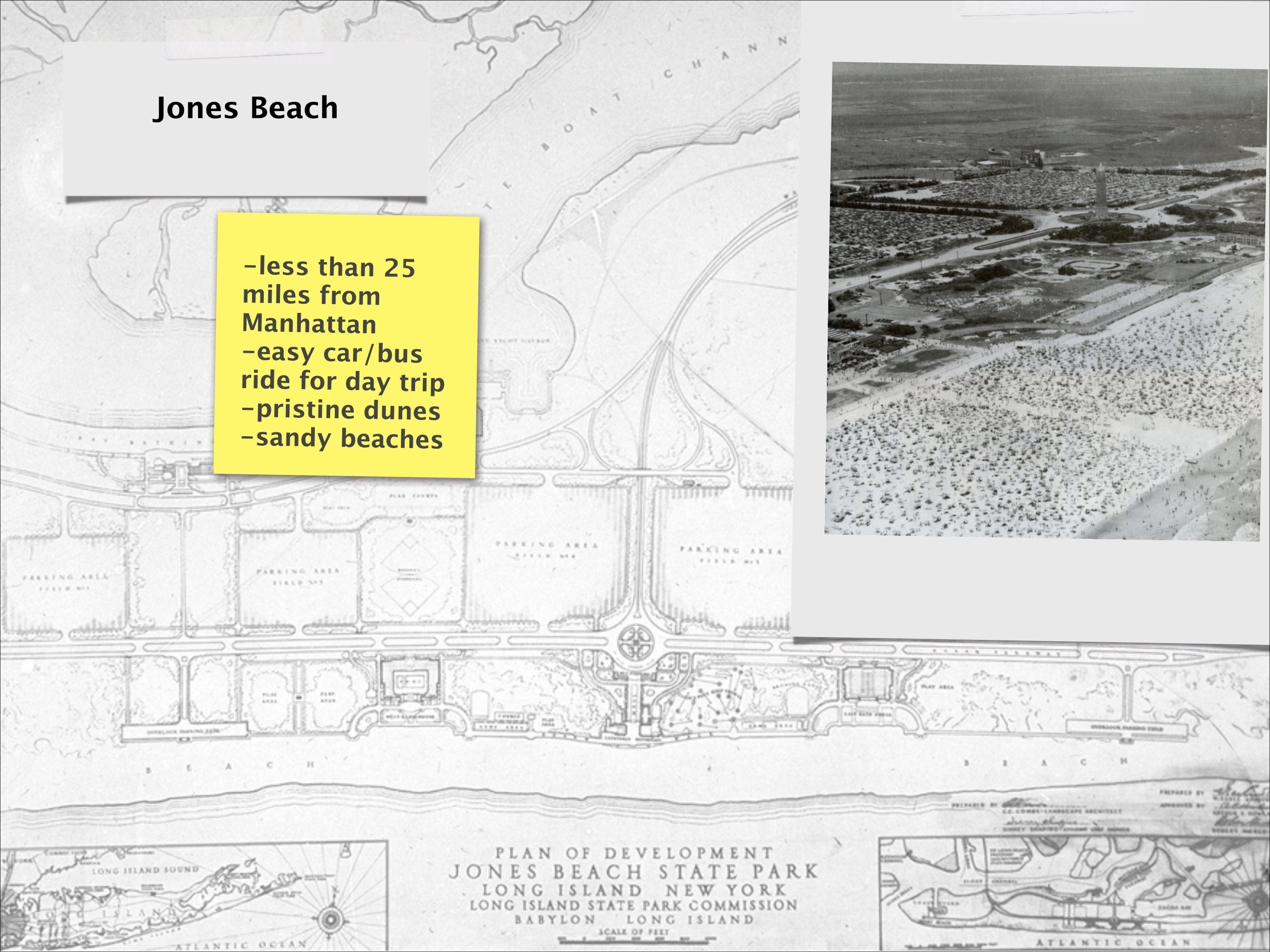


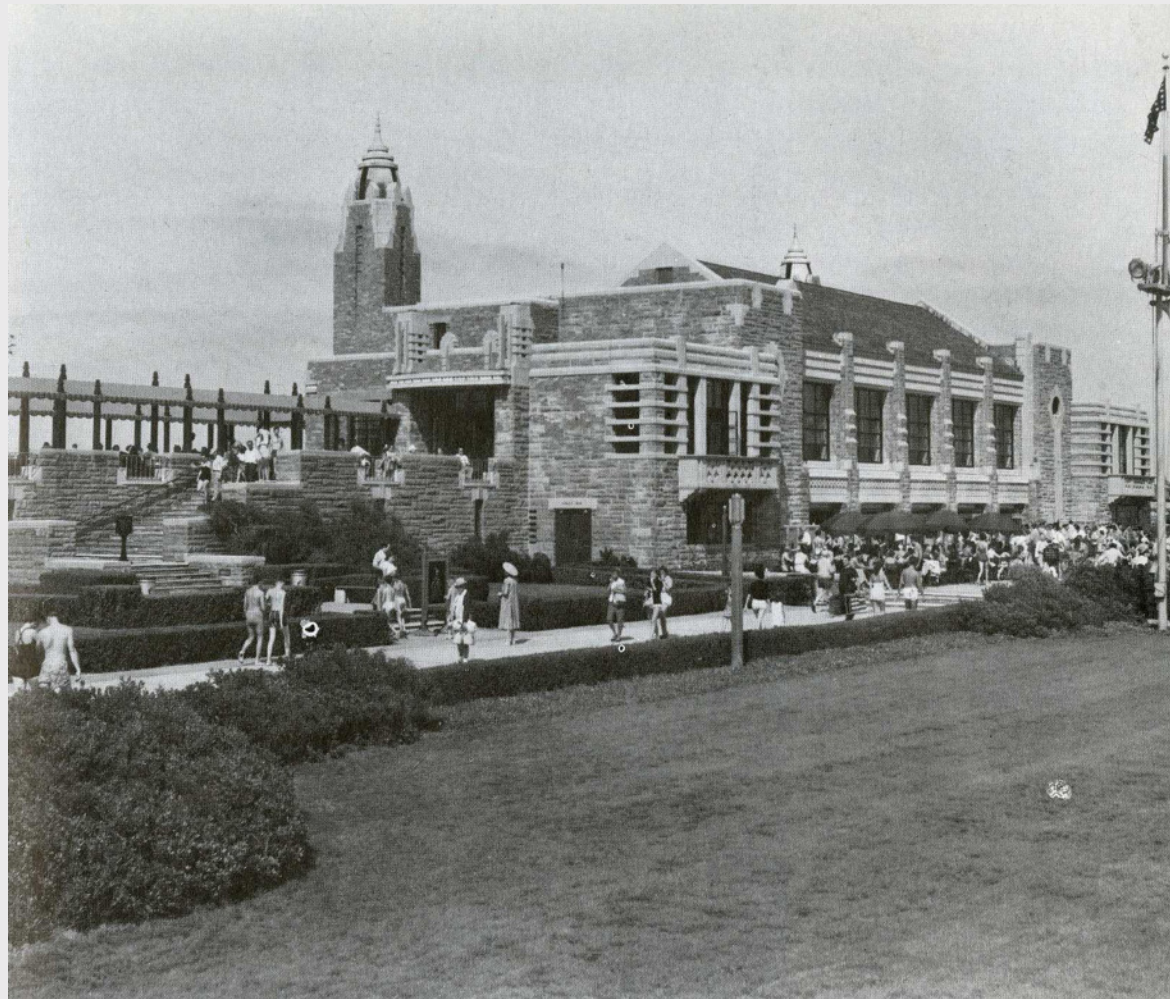
Robert Moses' Jones Beach

And his vision for
the parks on Long
Island

Jones Beach

- less than 25 miles from Manhattan
- easy car/bus ride for day trip
- pristine dunes
- sandy beaches





The buildings at Jones Beach



–like palaces for common people

OF DEVELOPMENT
BEACH STATE PARK
LAND NEW YORK
STATE PARK COMMISSION
ON LONG ISLAND

SCALE OF FEET





**The Watertower
-a utilitarian object
converted to a landmark**

WATER TOWER AND CENTRAL MALL, JONES BEACH, LONG ISLAND, N. Y.



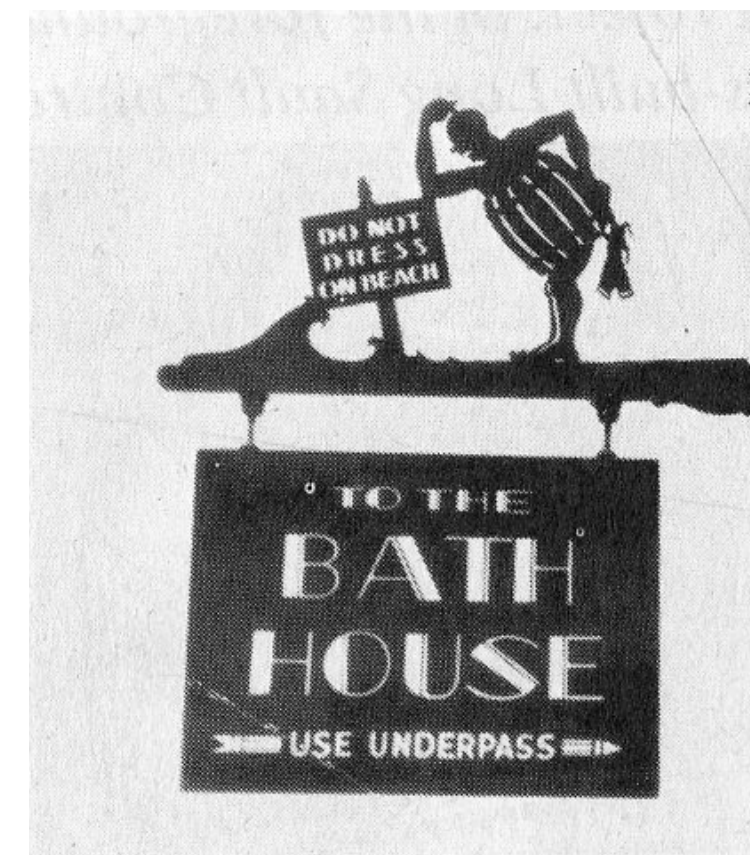
LONG ISLAND STATE PARKS SERIES



PLAN OF DEVELOPMENT
JONES BEACH STATE PARK
LONG ISLAND NEW YORK
LONG ISLAND STATE PARK COMMISSION
BABYLON LONG ISLAND

SCALE OF FEET

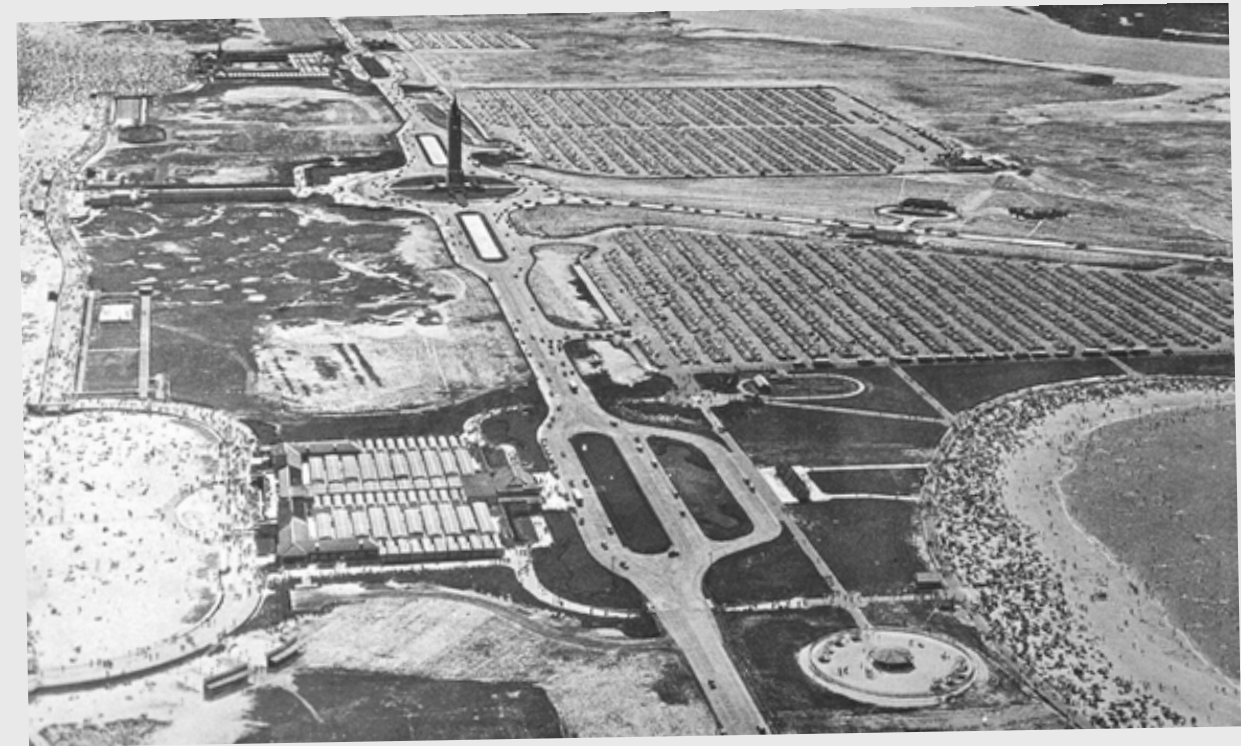




Signage
-witty and
whimsical

Parking

-is isolated from the beach and thus concealed from the view



Parking

View



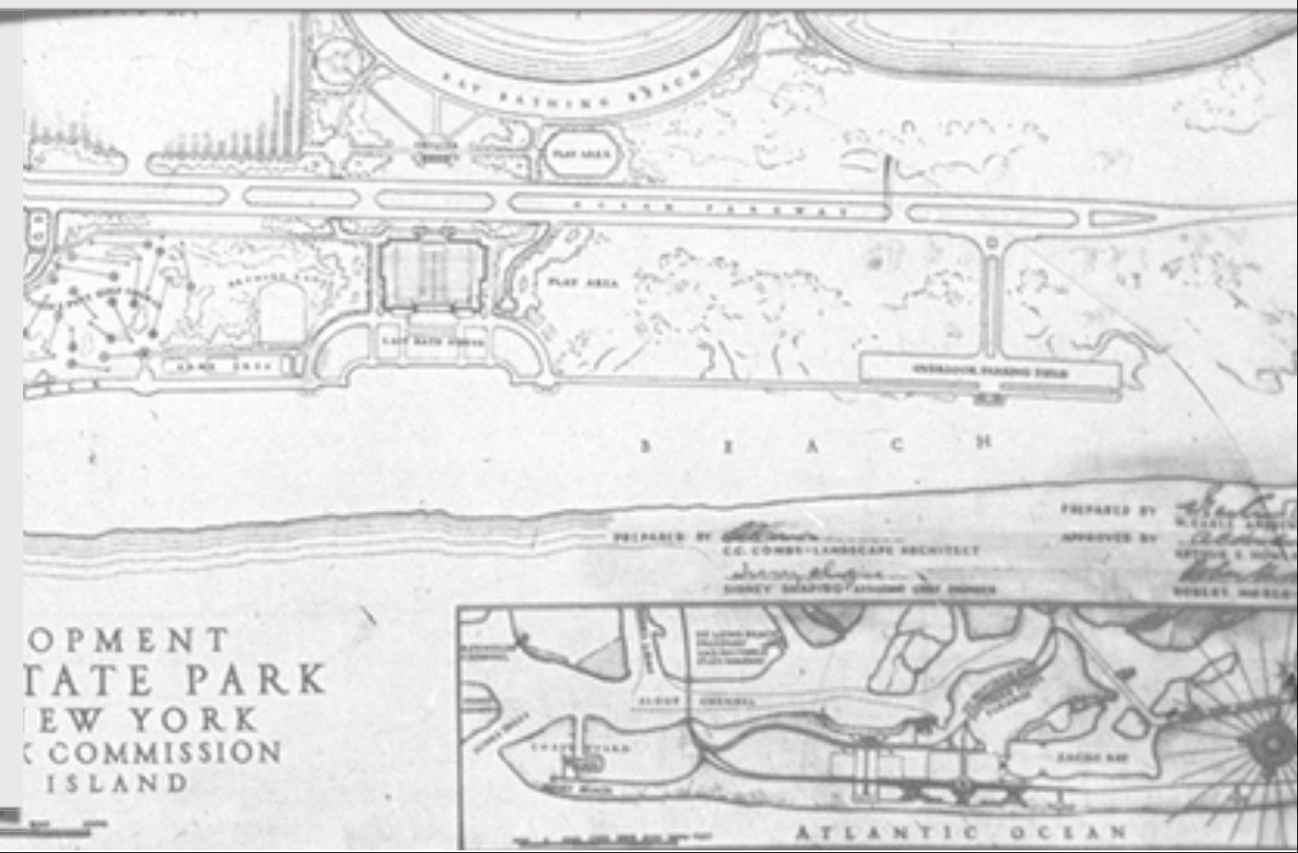
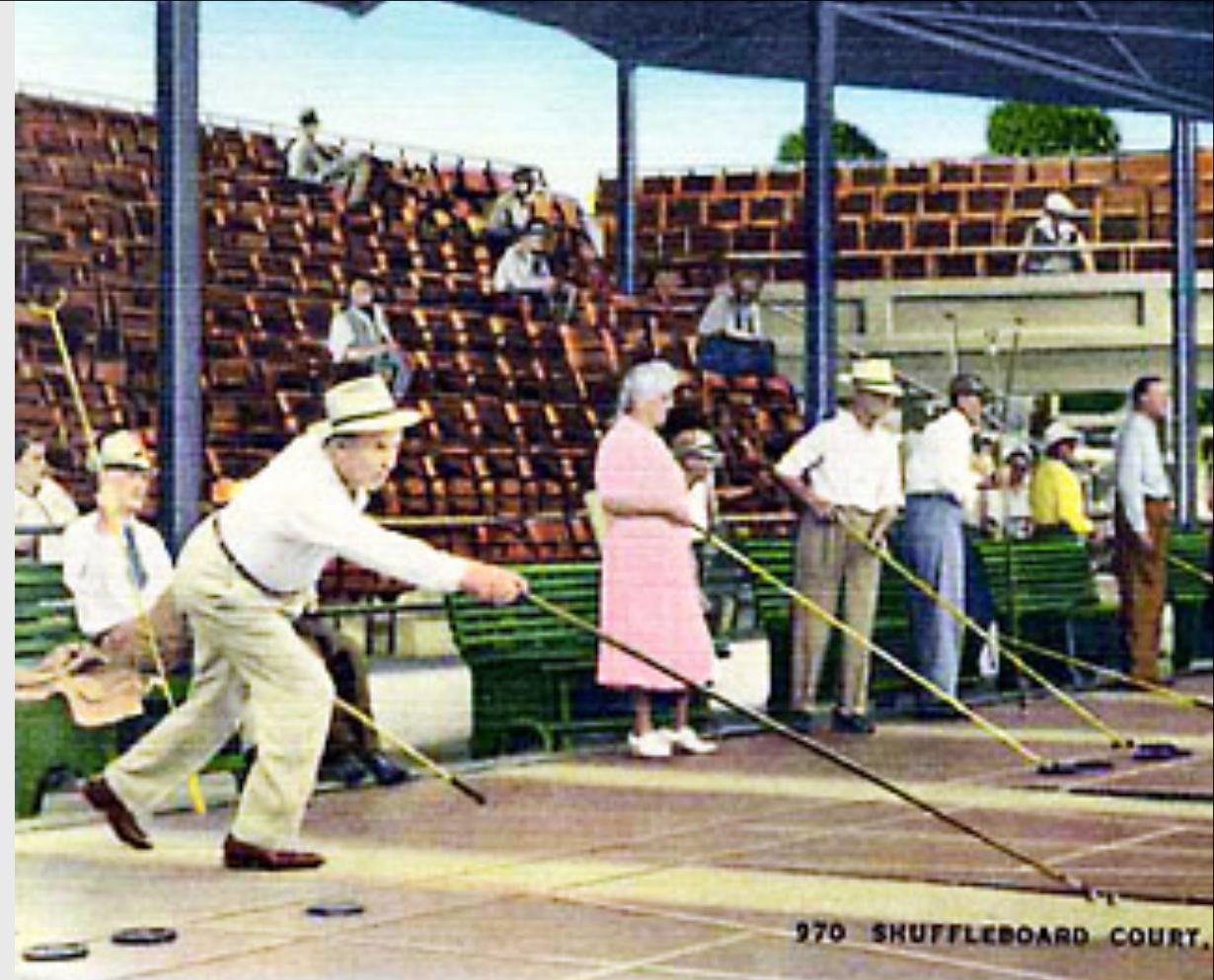
PLAN OF DEVELOPMENT
JONES BEACH STATE PARK
LONG ISLAND NEW YORK
LONG ISLAND STATE PARK COMMISSION
BABYLON LONG ISLAND

SCALE OF FEET





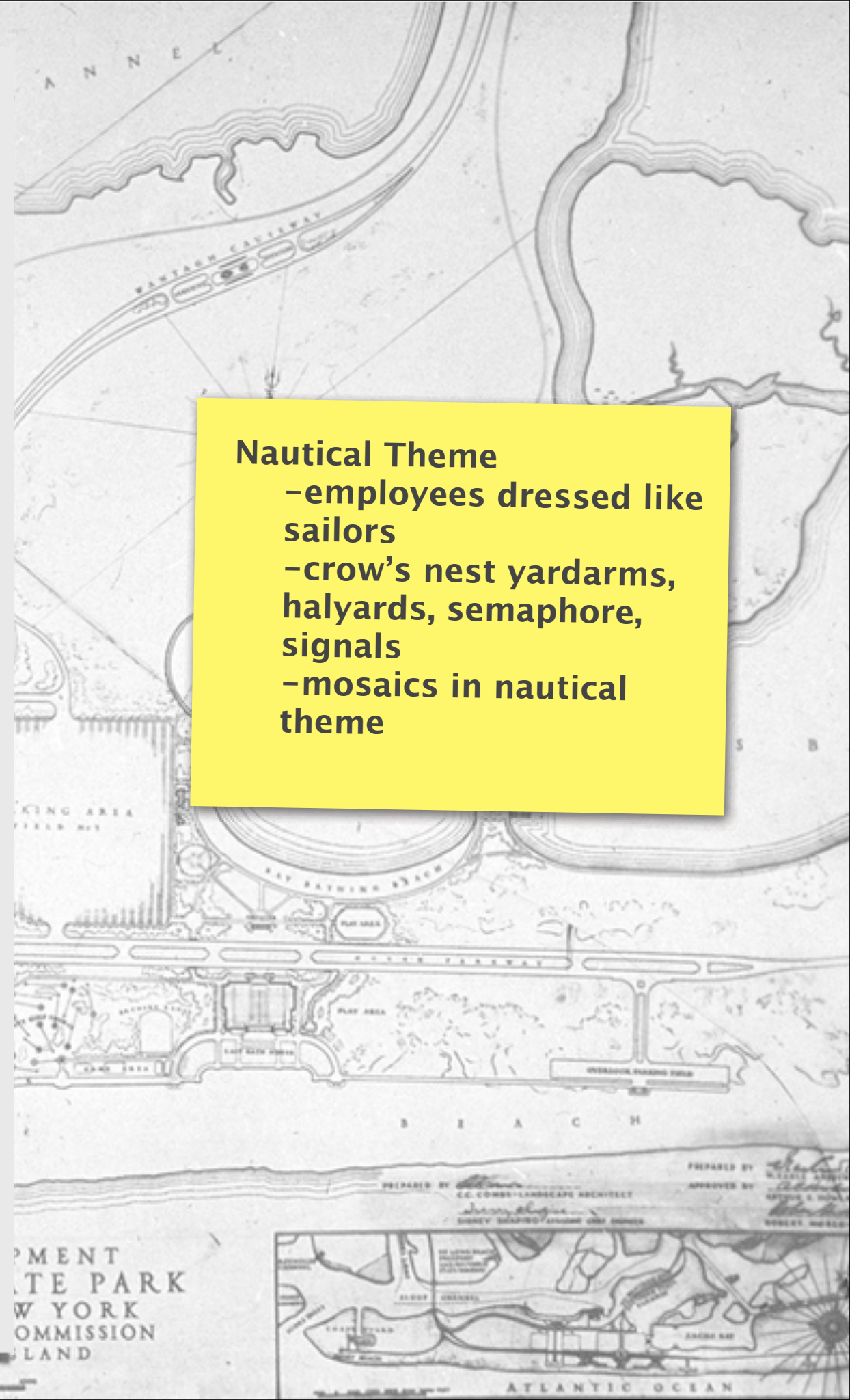
Jones Beach was unique in that it wasn't just a beach but it was designed to be a recreation area with a considerable number of recreational activities for young and old.





Nautical Theme

- employees dressed like sailors
- crow's nest yardarms, halyards, semaphore, signals
- mosaics in nautical theme



Challenges of building Jones Beach



**-time
pressure-
complete
before Al
Smith left
governorship**

**problems of
construction
on a barrier
island**

**difficult land
acquisition**

**acquiring
continuing
state funding**



**in 1932
attendance
was 3.2 million**

**Jones Beach was a triumphant
success.**

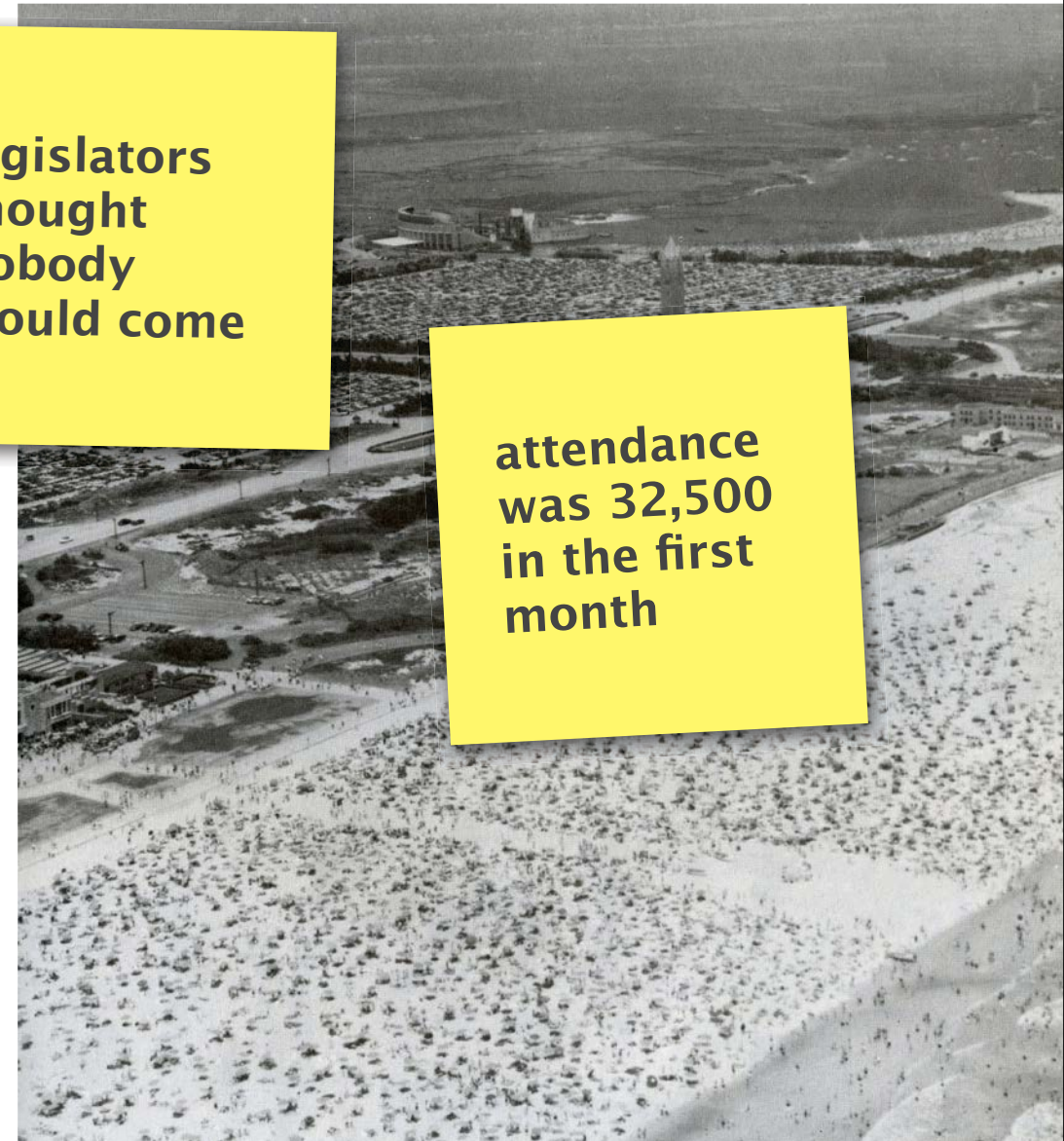


**in 1931
attendance
went up to
2.7 million**



**legislators
thought
nobody
would come**

**attendance
was 32,500
in the first
month**



**in 1930
attendance
was 1.5
million**



OWER AND CENTRAL MALL, JONES BEACH, LONG ISLAND, N. Y.



The New York Times

'Nowhere on this continent is there a public or private beach that is even comparable to the one that the State under Robert Moses has built.'

Herald Tribune

'Most prosaically named, most beautifully landscaped of beaches.'



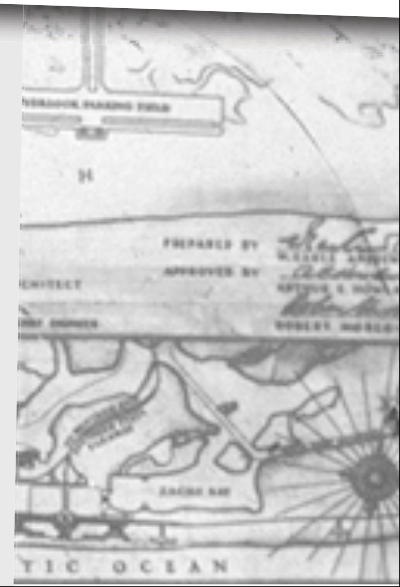
Praise from park experts
around the world.



**'This is the finest
seashore
playground ever
given the public
anywhere in the
world.'**



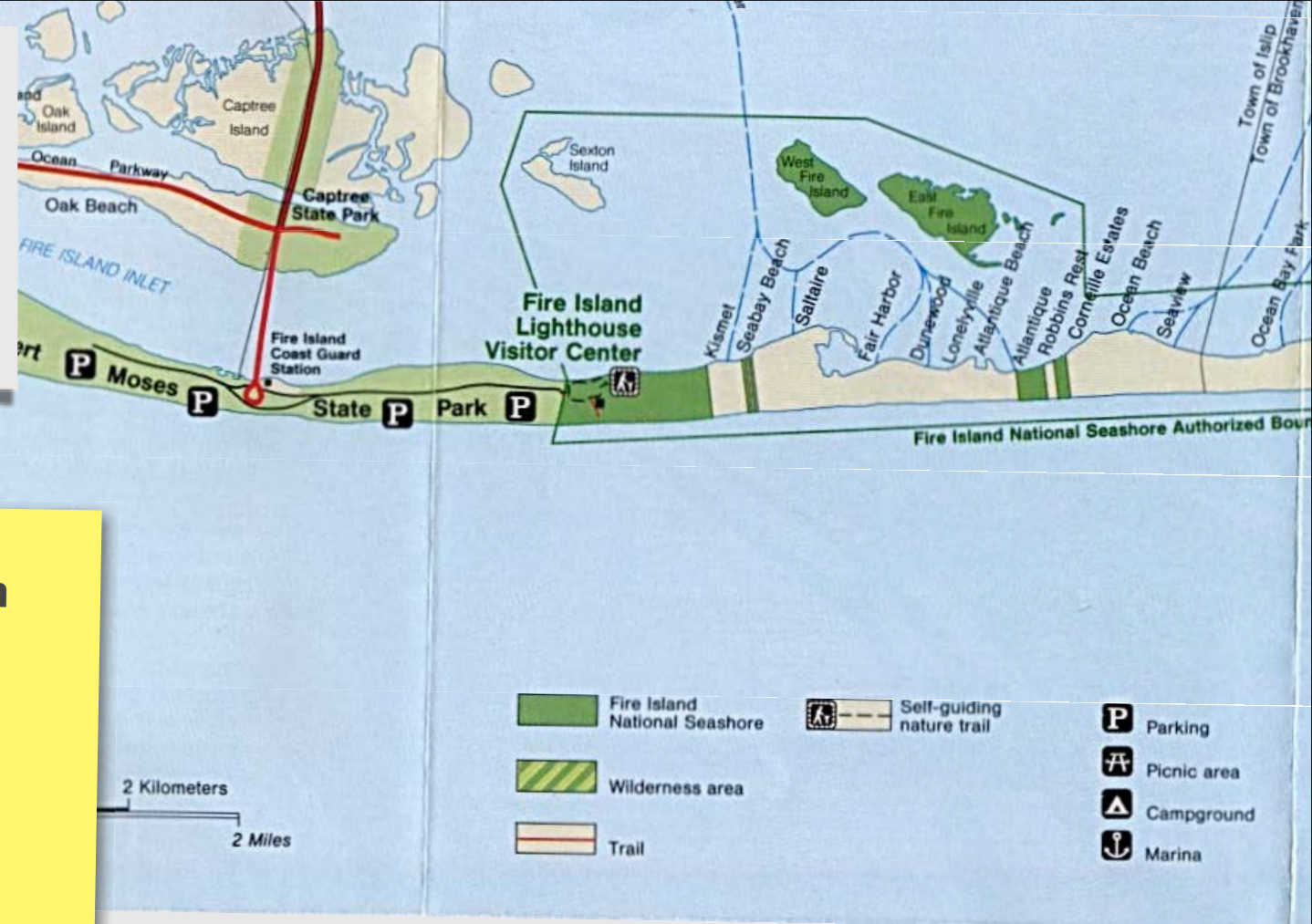
**'For almost the
first time in the
history of public
beaches, this
beach is conceived
as a spot for
recreation, not
amusement
stimulated by
honky-tonk.'**



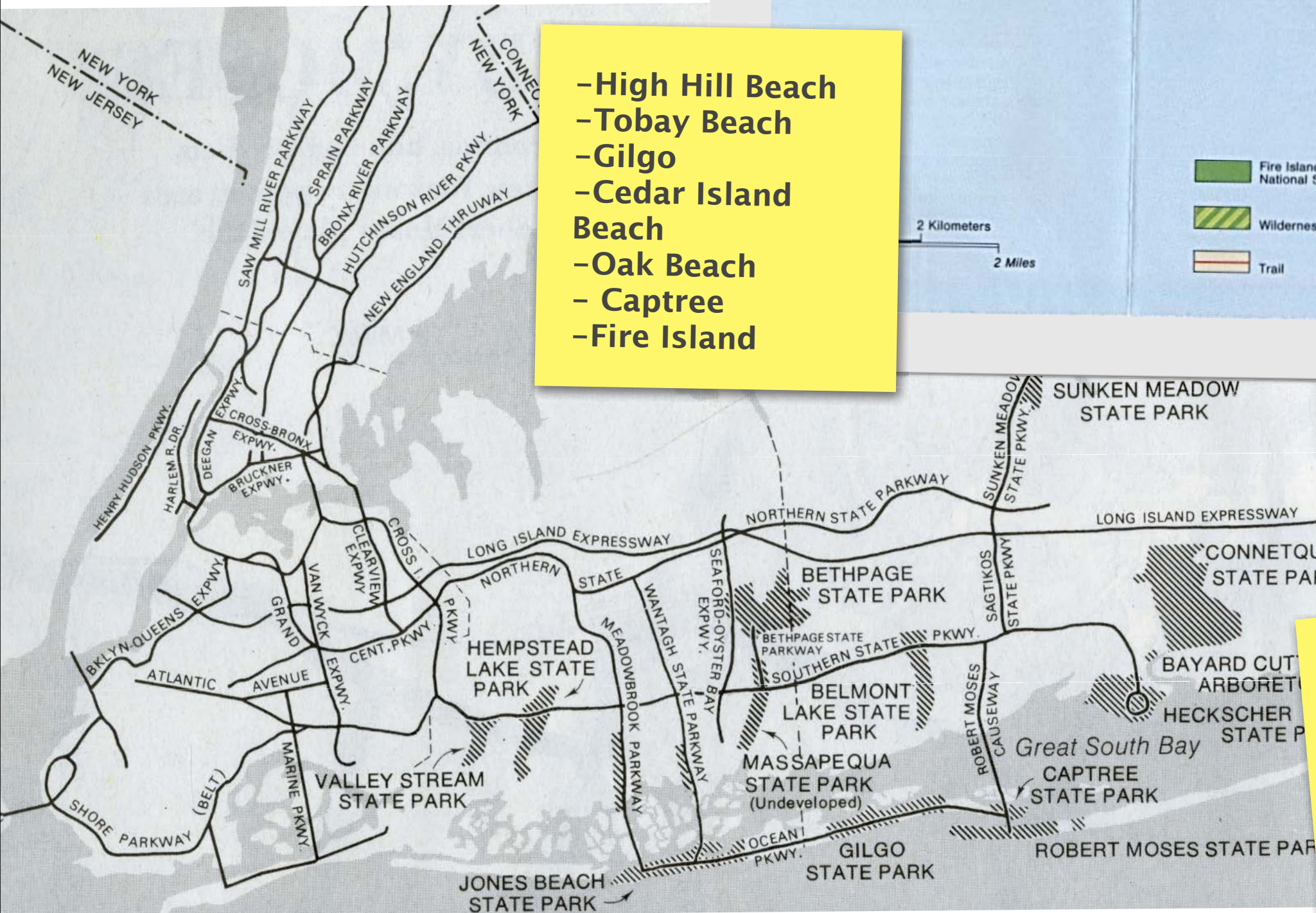


robert moses

Success stimulated the creation of other beaches nearby.



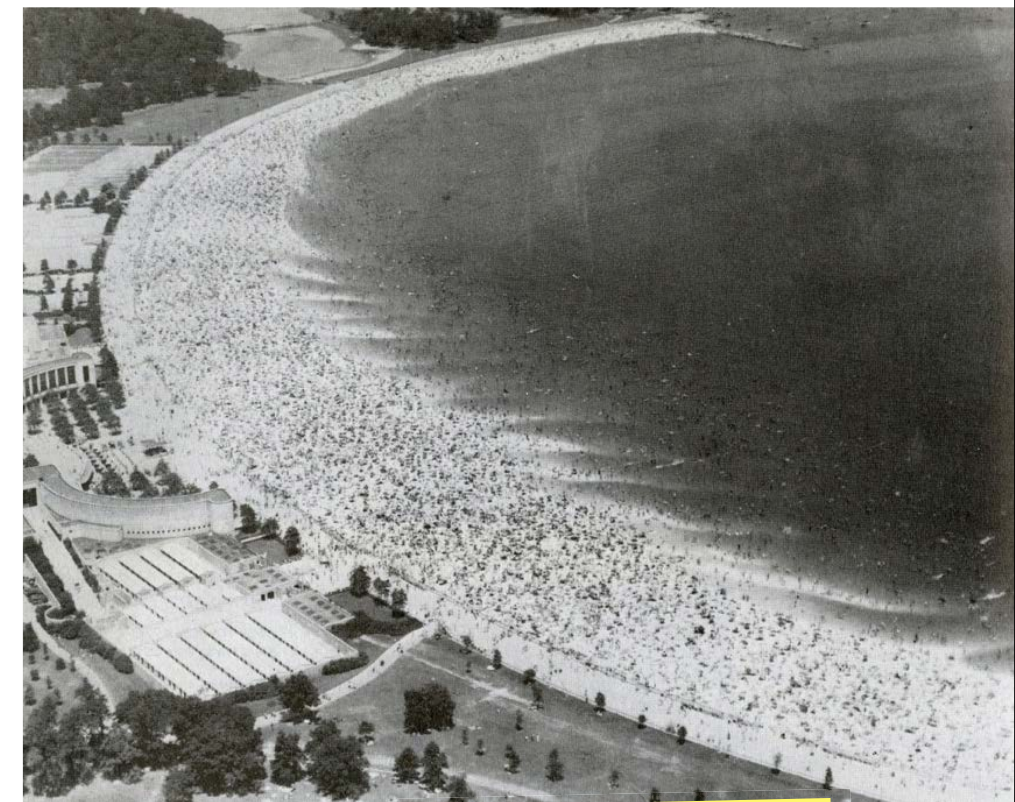
- High Hill Beach
- Tobay Beach
- Gilgo
- Cedar Island Beach
- Oak Beach
- Captree
- Fire Island



And the causeways and parkways necessary to connect them.



Not to mention other beaches that were closer to Manhattan

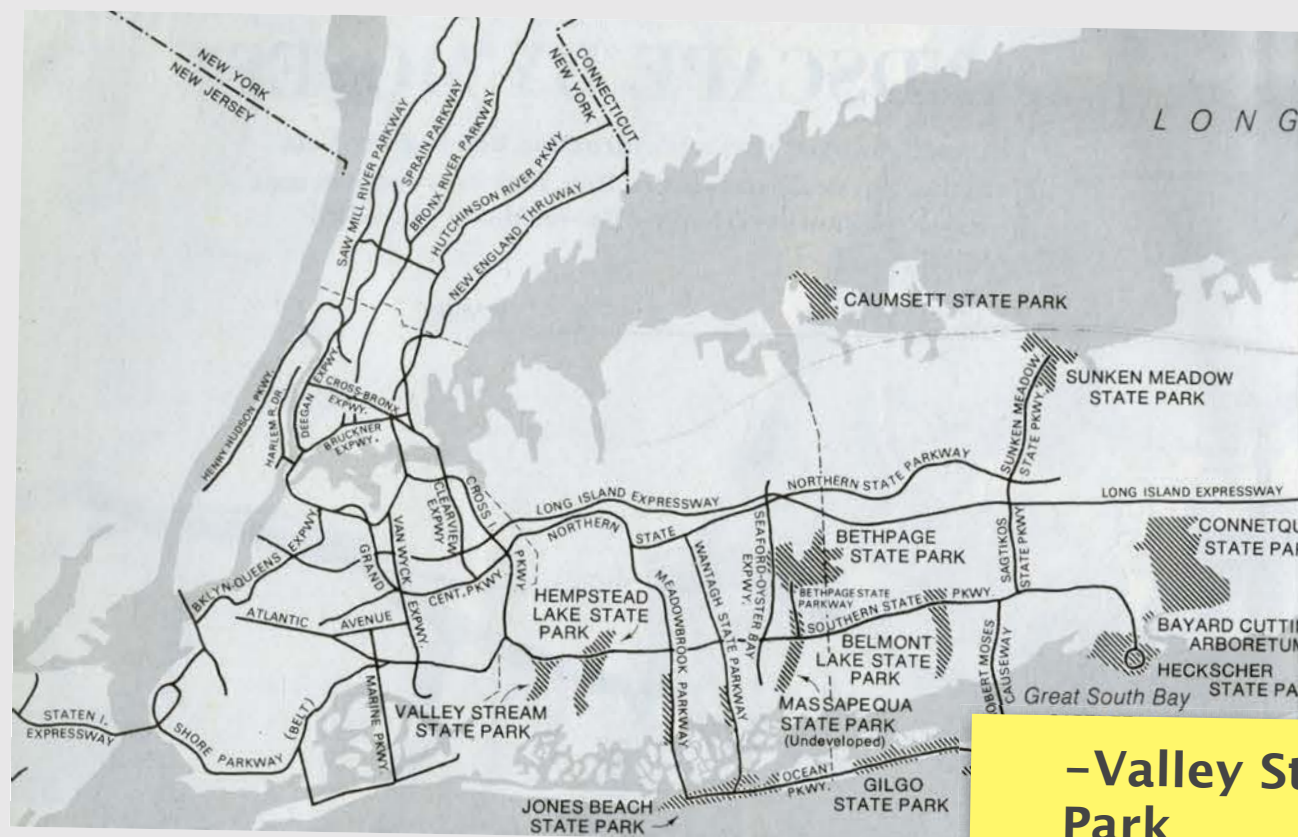


Jacob Riis Park



Orchard Beach



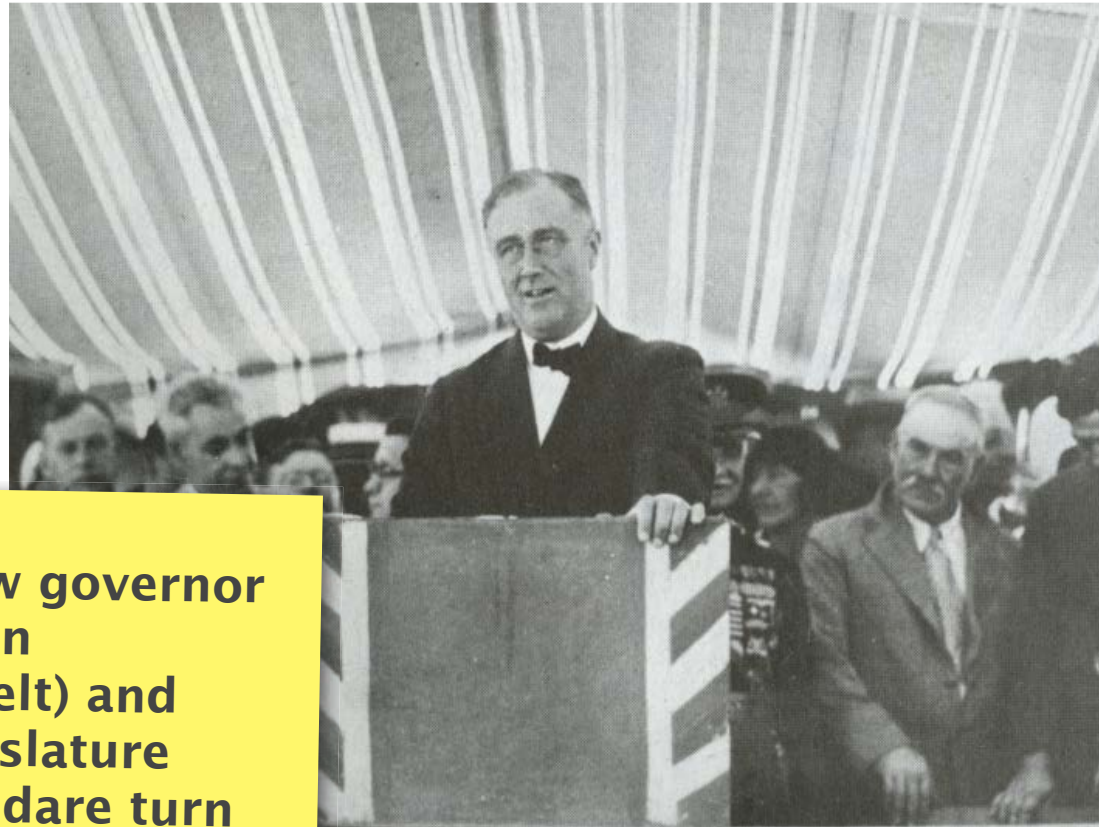


Other major parks +
parkways on Long Island

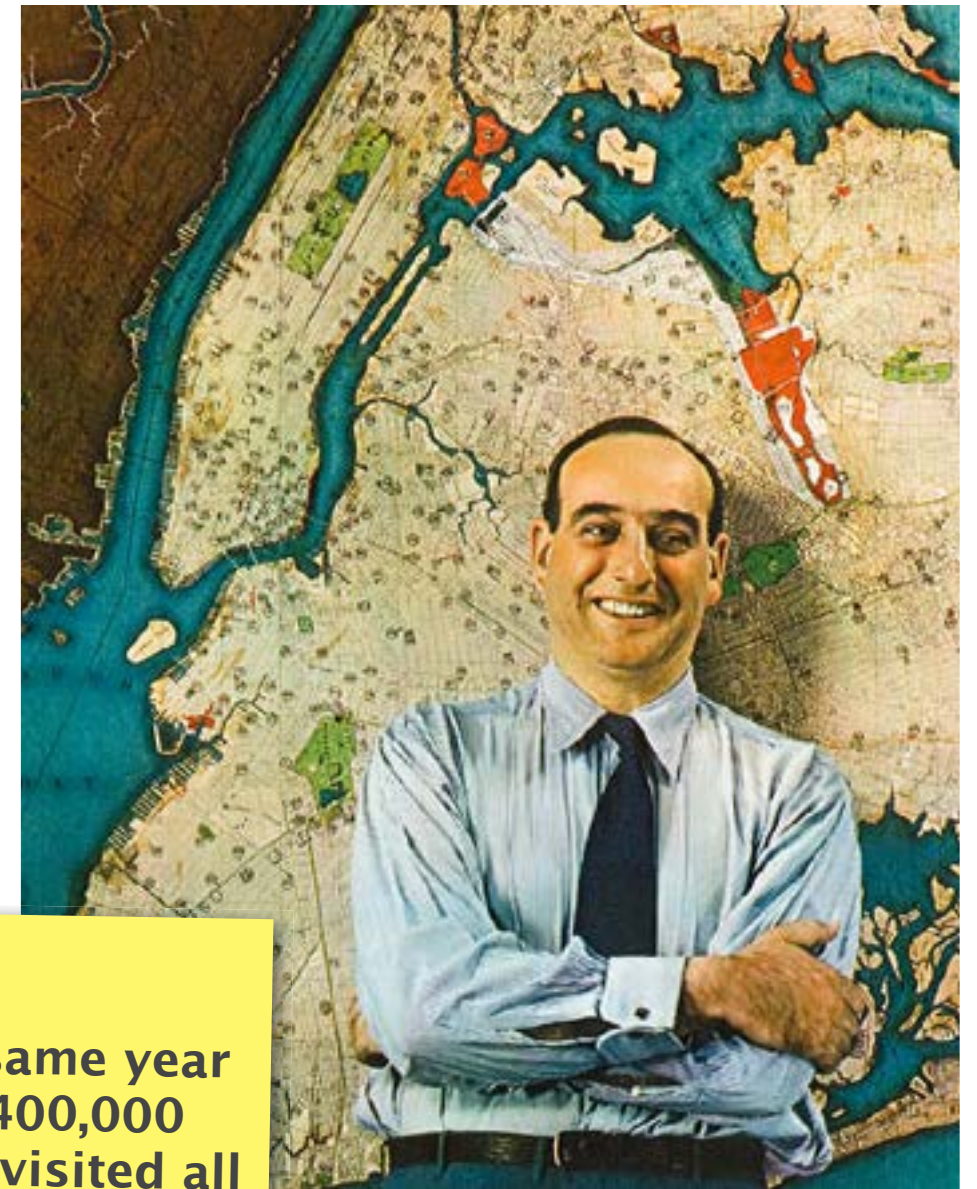
- Valley Stream State Park
- Bethpage State Park
- Caumsett State Park
- Connetqua State Park
- Belmont Lake State Park
- Hempstead Lake State Park
- Massapequa State Park
- Sunken Meadow State Park
- Wildwood State Park
- Hither Hills State Park
- Montauk State Park
- Robert Moses State Park

- Northern State Parkway
- Central Parkway
- Long Island Expressway
- Southern State Parkway

The popularity of the parks made Robert Moses bulletproof



The new governor (Franklin Roosevelt) and the legislature did not dare turn down his budget requests for fear of public reprisal.



In 1930 over 3,000,000 people visited Long Island State Parks.

In the same year only 3,400,000 people visited all of the National Parks in the U.S..



STATE PARK
N LONG
SCALE OF FEET

ATLANTIC OCEAN

How was Moses able to pull off such a feat?

Collaboration

with Al Smith



Very different personalities

- Smith was gregarious and boisterous
- Moses was analytical and intense

Very different backgrounds

- Smith was from the tenements under the Brooklyn Bridge
- Moses was from the educated elite

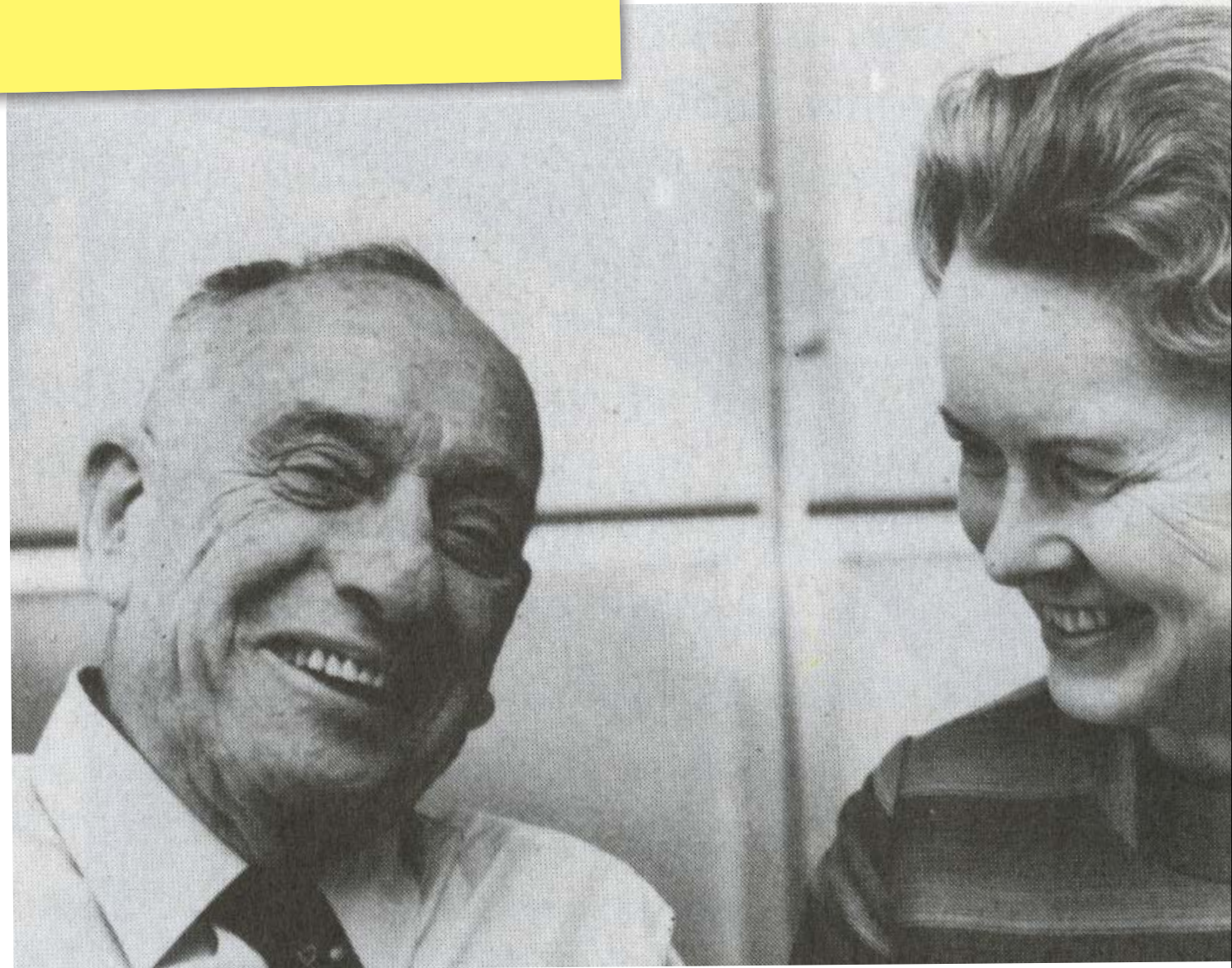
How was Moses able to pull off such a feat?

Collaboration

with Mary Moses (his wife)

'Mary was always around. Moses was always consulting her. Bob used to say that the only decisions he made that were mistakes were the decisions he neglected to talk over with Mary first.'

Mrs. Harold Morse, family friend



PL
JONE
LON
LONG
B

SCALE OF FEET

ATLANTIC OCEAN

A topographic map of a coastal area, likely Long Island, showing various landforms, water bodies, and infrastructure. The map is detailed with contour lines and labels for various locations.

How was Moses able to pull off such feats?

Teamwork



'You can get an awful lot done in the world if you're willing to let someone get the credit for it.'

Robert Moses



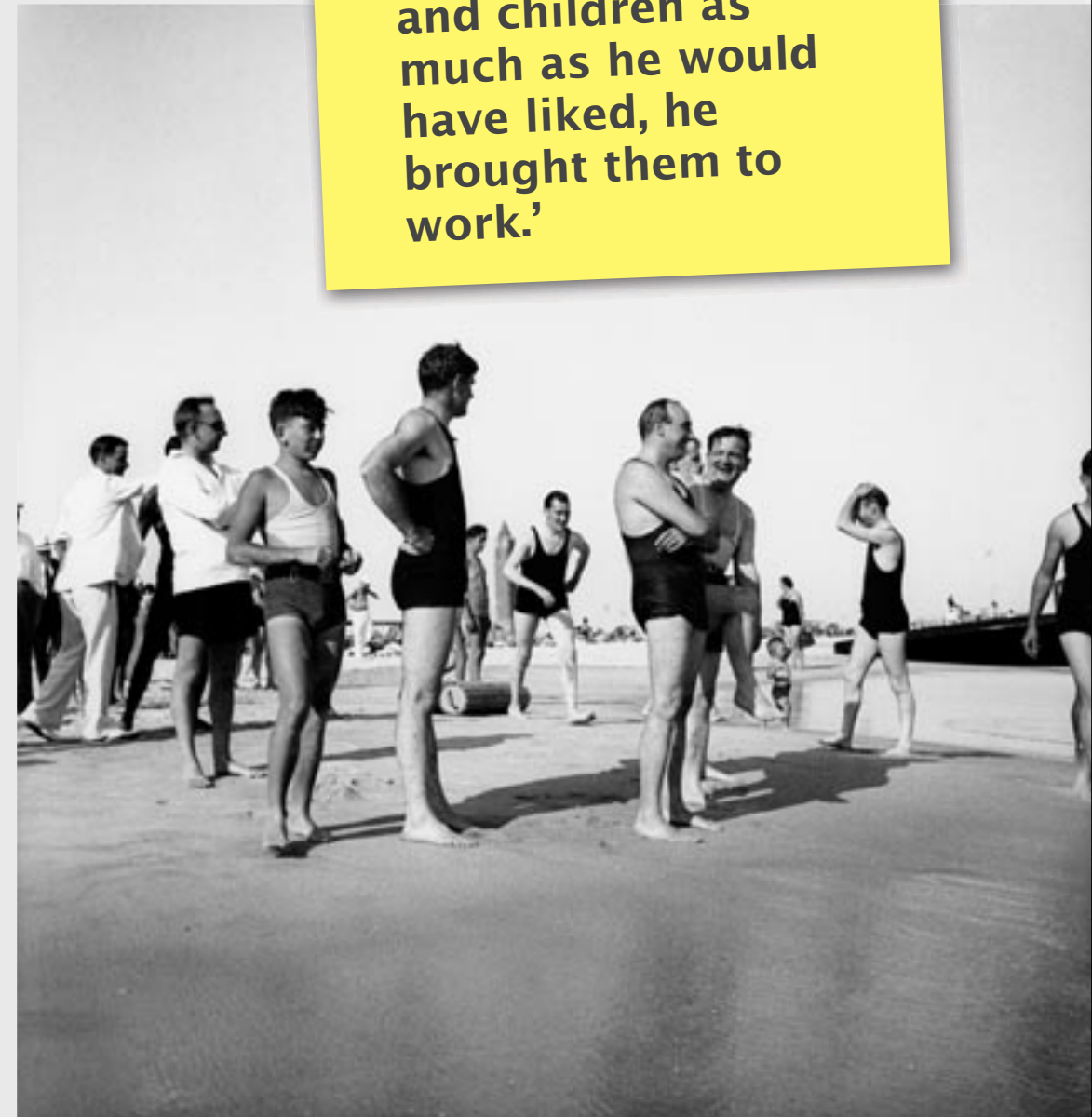
'There was always a lot of joking going on. You weren't afraid to kid with him.'

Teamwork

'He helped arrange the logs for the clambake, helped clean up afterward, helped with the children.'

How was Moses able to pull off such feats?

'He turned the Commission staff into a big family. If he couldn't get home to his wife and children as much as he would have liked, he brought them to work.'



Moses at the beach with his staff.



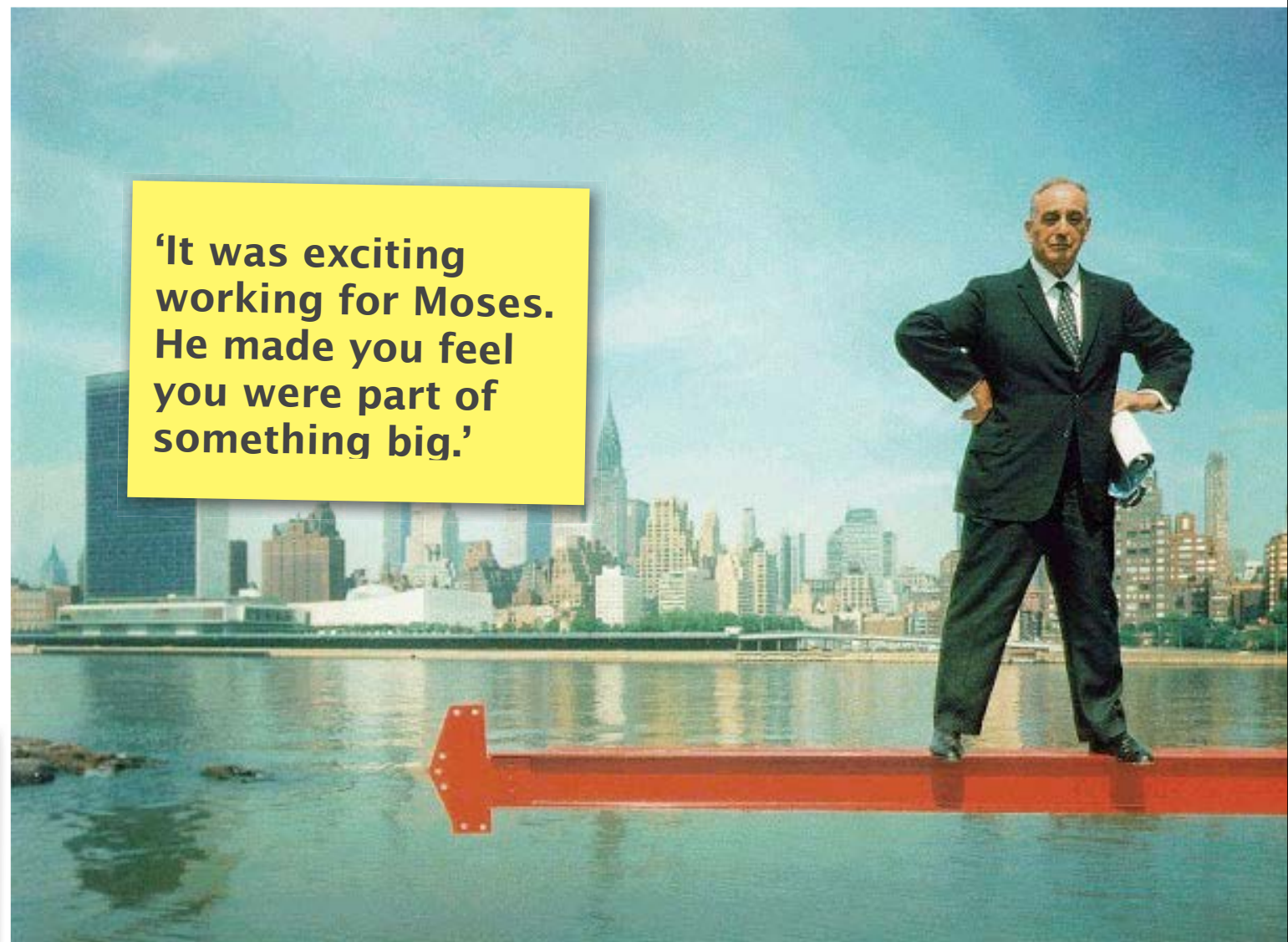
How was Moses able to pull off such feats?

'He was an altogether brilliant man. If you were working with him you just had to learn from him.'

'If he drove other men hard, he drove himself harder.'

Leadership

'Of all of the reasons why Moses' men didn't resent his driving, the one most frequently mentioned is that he brought out the best in them.'

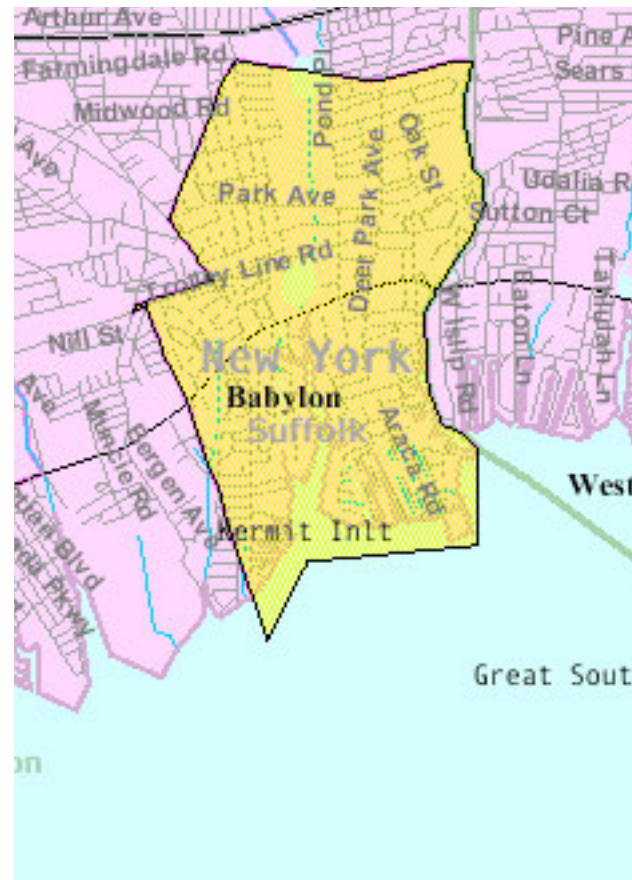


'It was exciting working for Moses. He made you feel you were part of something big.'

How was Moses able to pull off such feats?

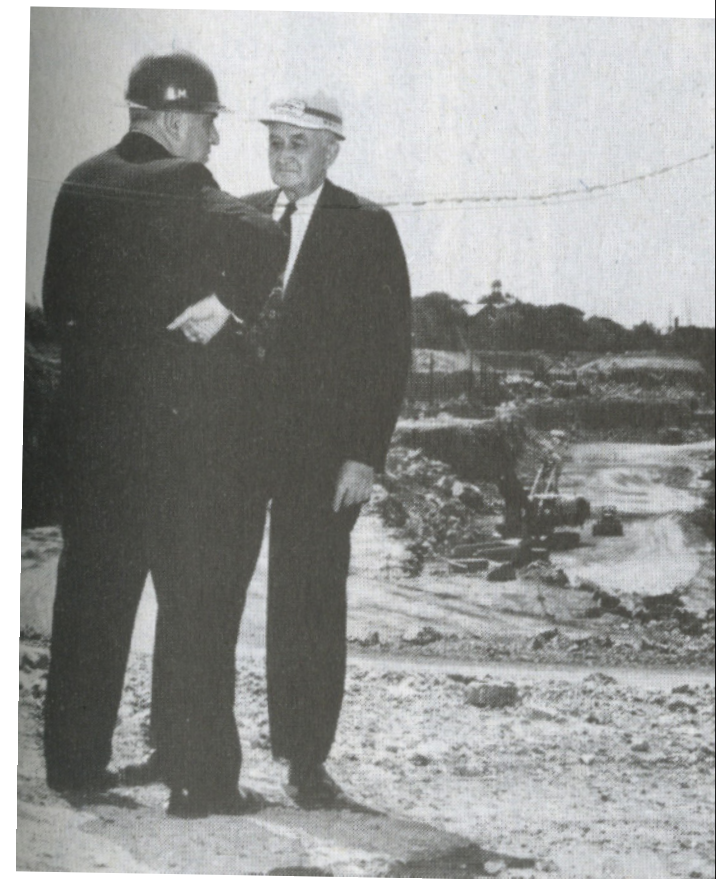
Power

Knowledge Is Power



Blackmailing Babylon Town Board

–information about 1848 and 1856 bills that gave the State of New York rights to Babylon's bay bottoms.



JONES BEACH STATE PARK
LONG ISLAND NEW YORK
LONG ISLAND STATE PARK COMMISSION
BABYLON LONG ISLAND

SCALE OF FEET

How was Moses able to pull off such feats?

Power

Cleverness Is Power

Outfoxing Babylon's baymen

–Expanding voters on referendum to give town land to Moses beyond tax-paying property owners.



How was Moses able to pull off such feats?

Power

Political Power

**Circumventing
Hutchinson and Hewitt's
legislative actions**
–when they slashed
\$626,000 from the
State appropriations
bill to build parkways,
Al Smith robbed other
departments' budgets
to compensate



How was Moses able to pull off such feats?



Power

Money Is Power

Using his own (and his mother's) family money
–he bailed out
causeway contracting
firm by giving them a
loan when they
couldn't make payroll
–work continued and
Moses got repaid

How was Moses able to pull off such feats?



Power

Popularity Is Power

Getting funding even after Al Smith left the governorship

–Roosevelt and the legislature had to fund Moses' project because he and the projects were so popular.