

SYSTEMS AND ORDER AT A  
BUILDING SCALE

Architecture is the underlying  
structure of anything.



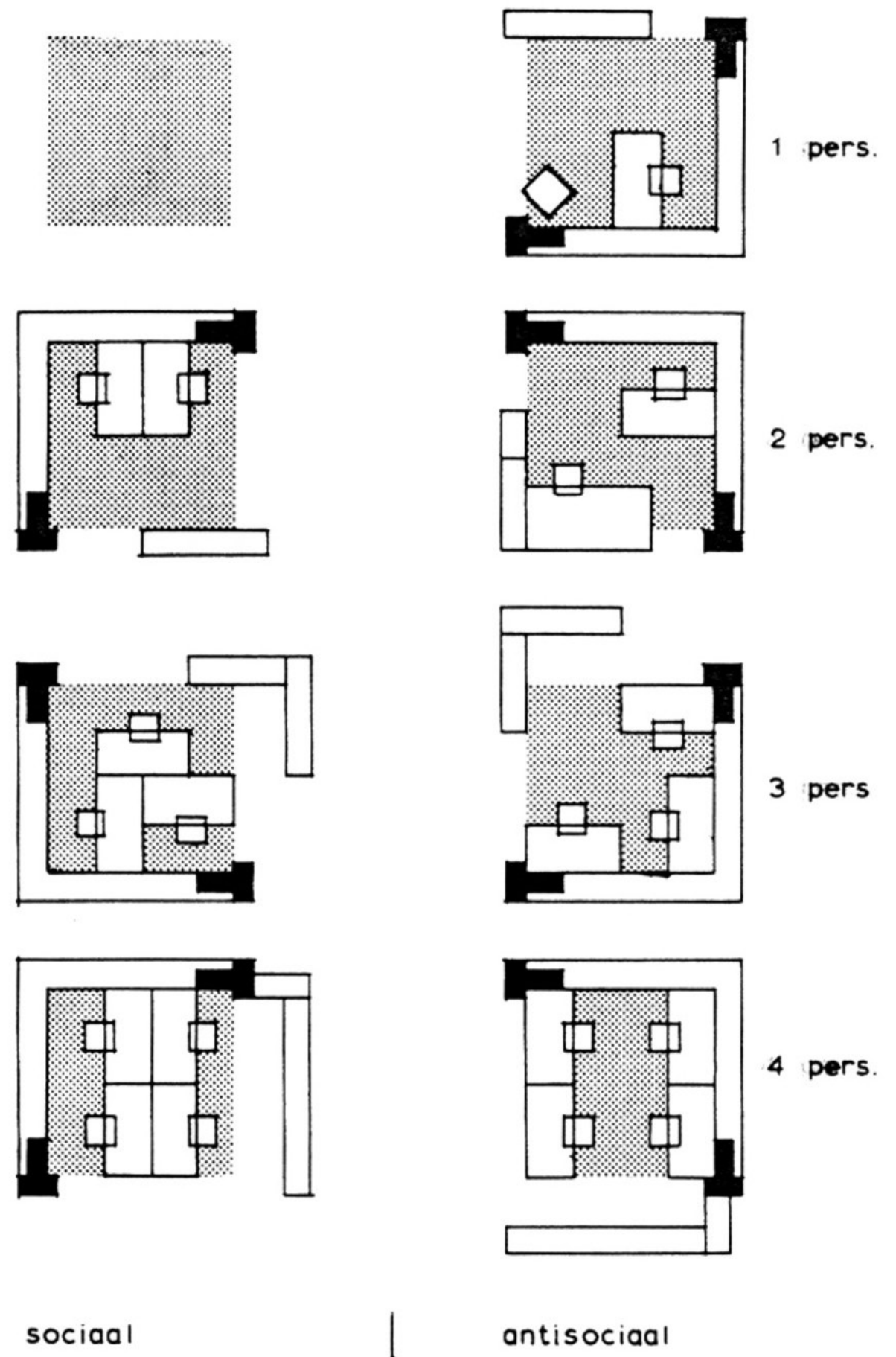




“We try to arrive  
at a wealth  
of formal  
expression by  
using simple,  
sober means.

-Herman  
Hertzberger

1972, Architect and Founder of AHH



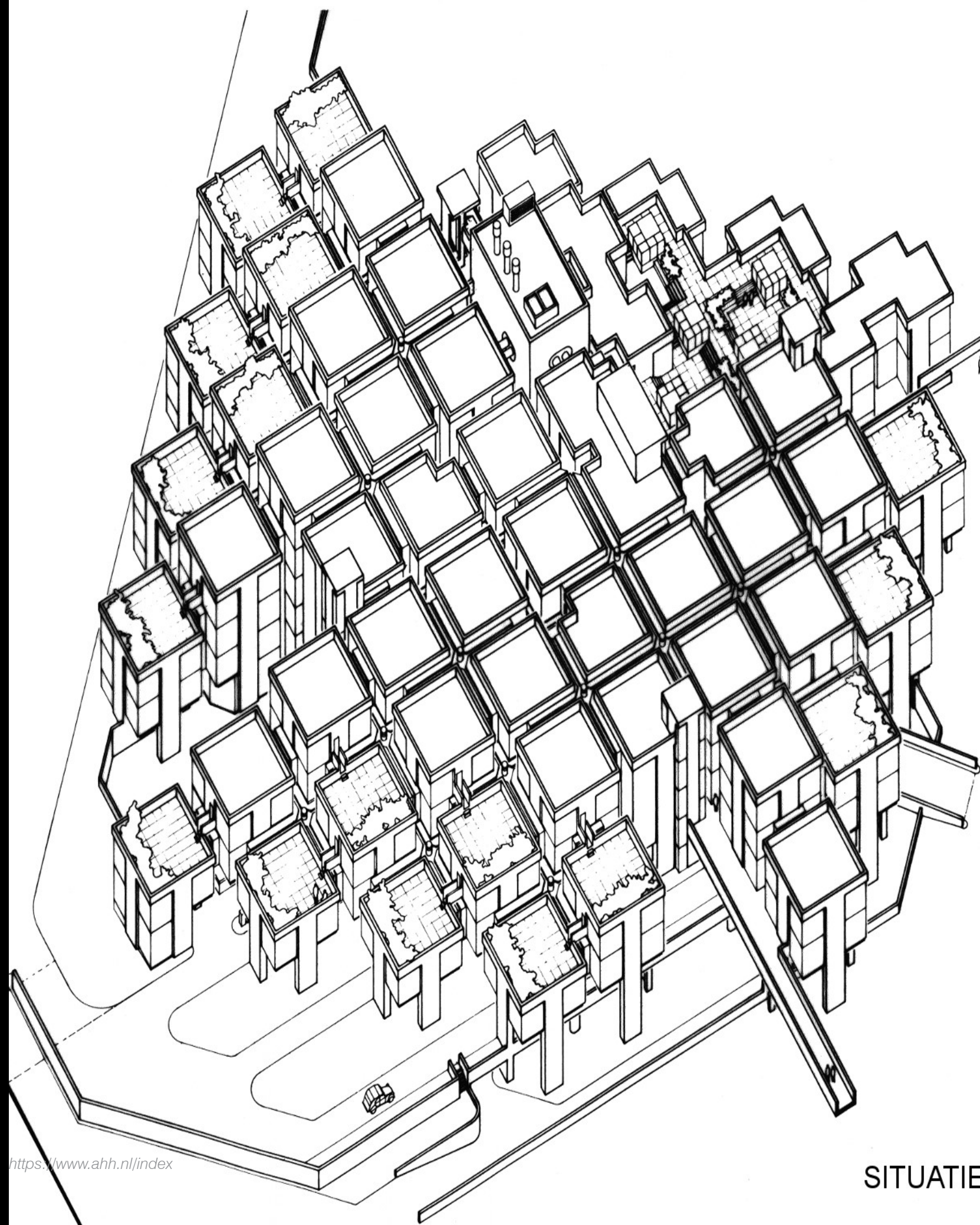


Central Beheer Offices

Apeldoorn, Holland

Herman Hertzberg

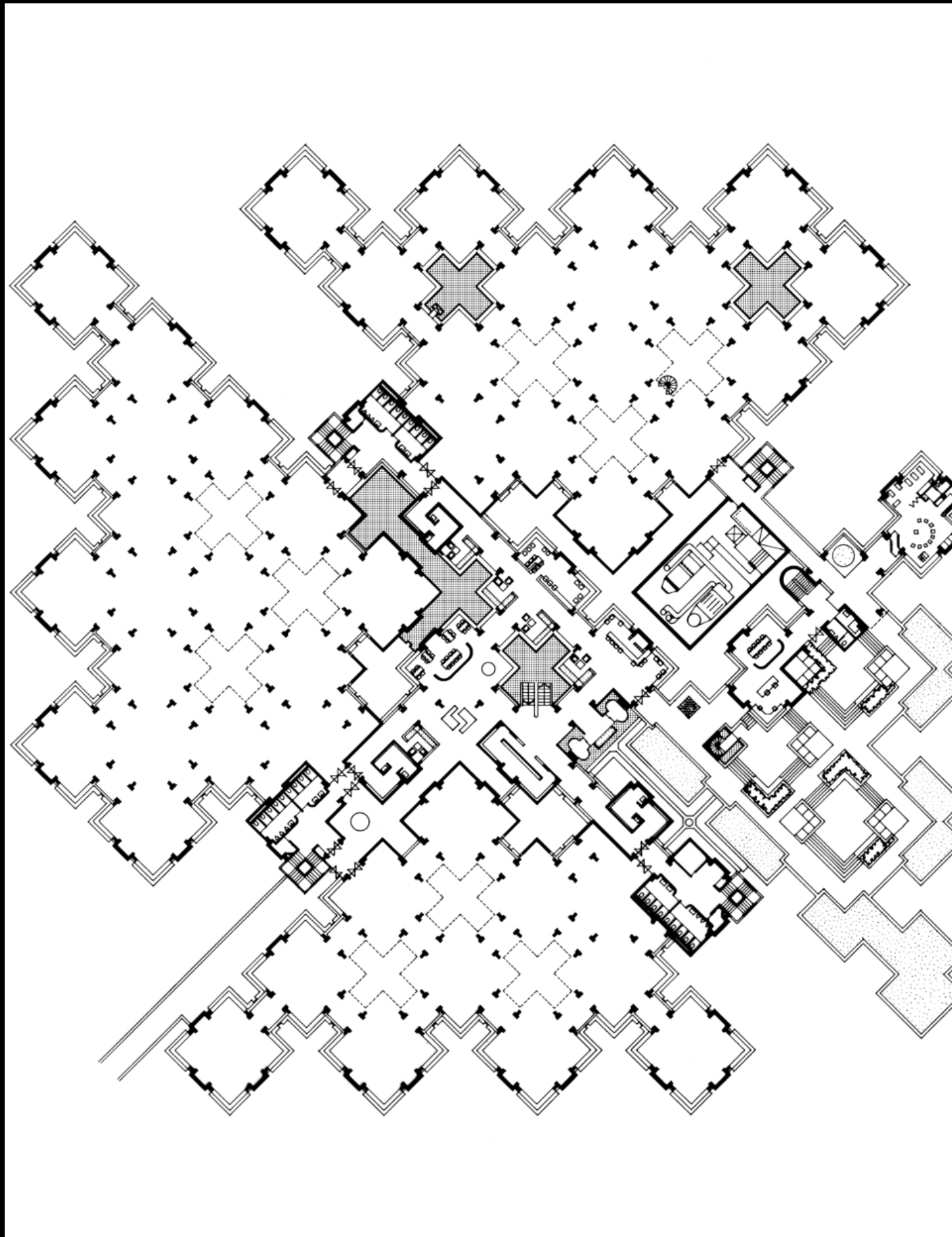
1974

























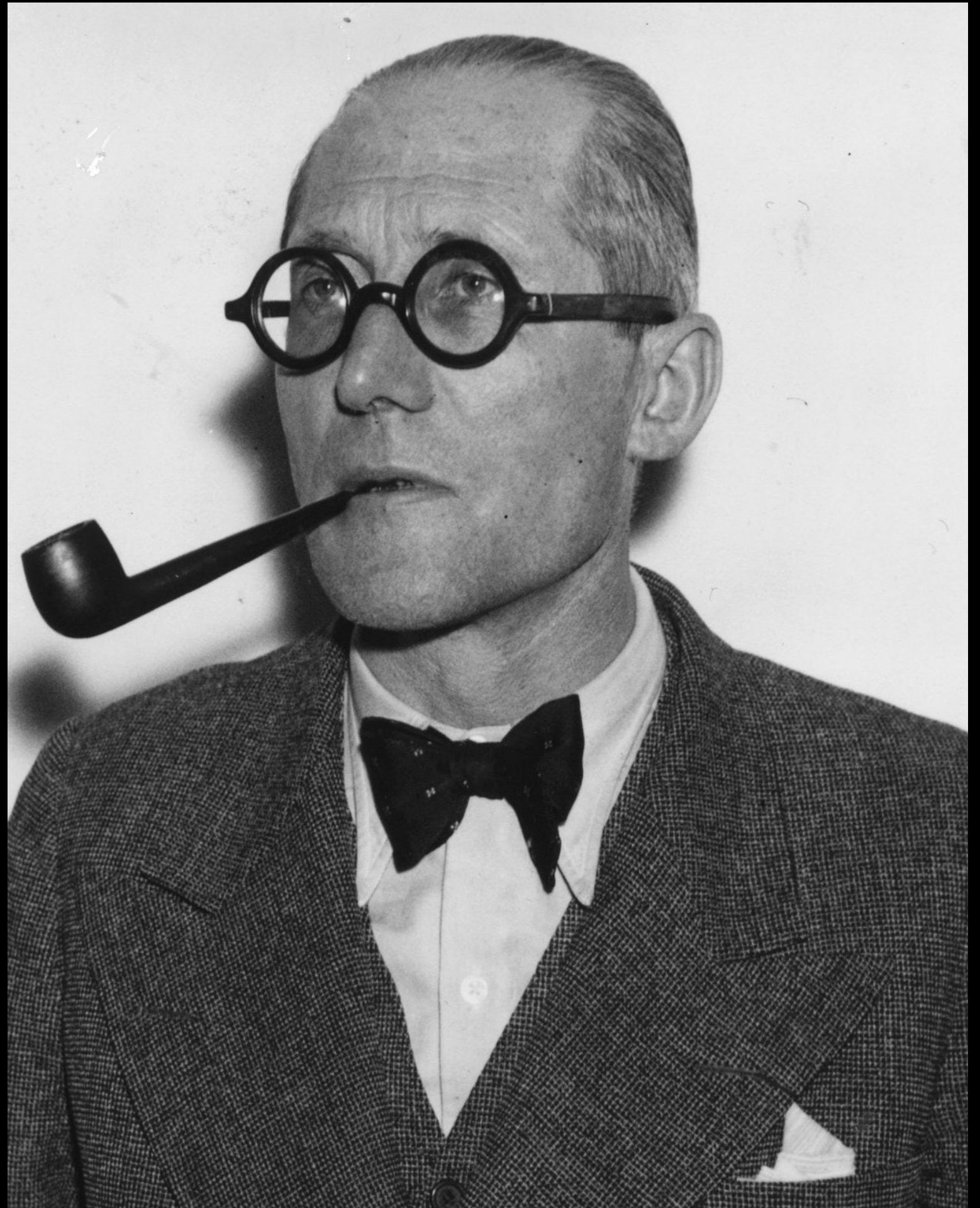




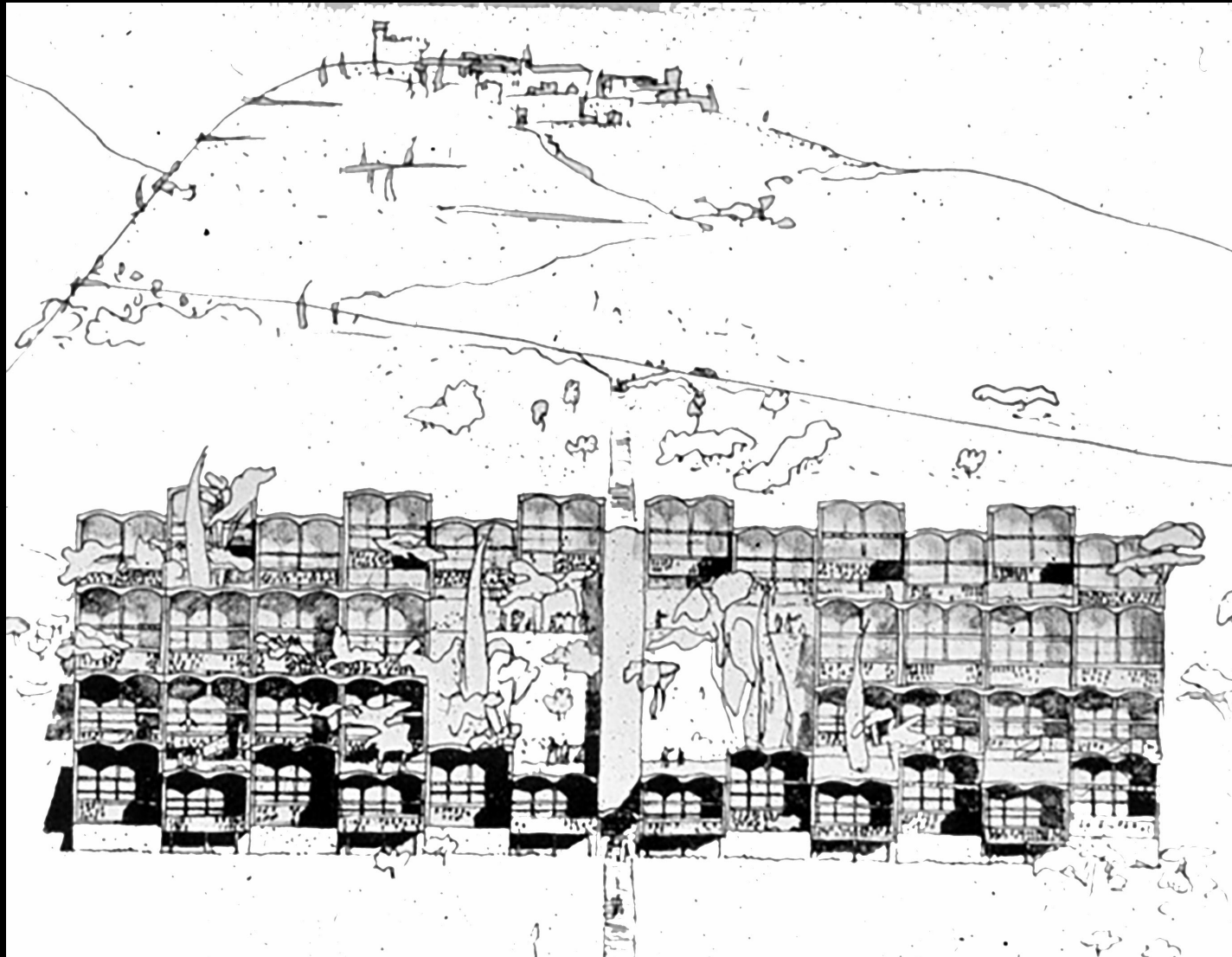


“Space and  
light and  
order. Those  
are the things  
that men  
need...”

-Le Corbusier



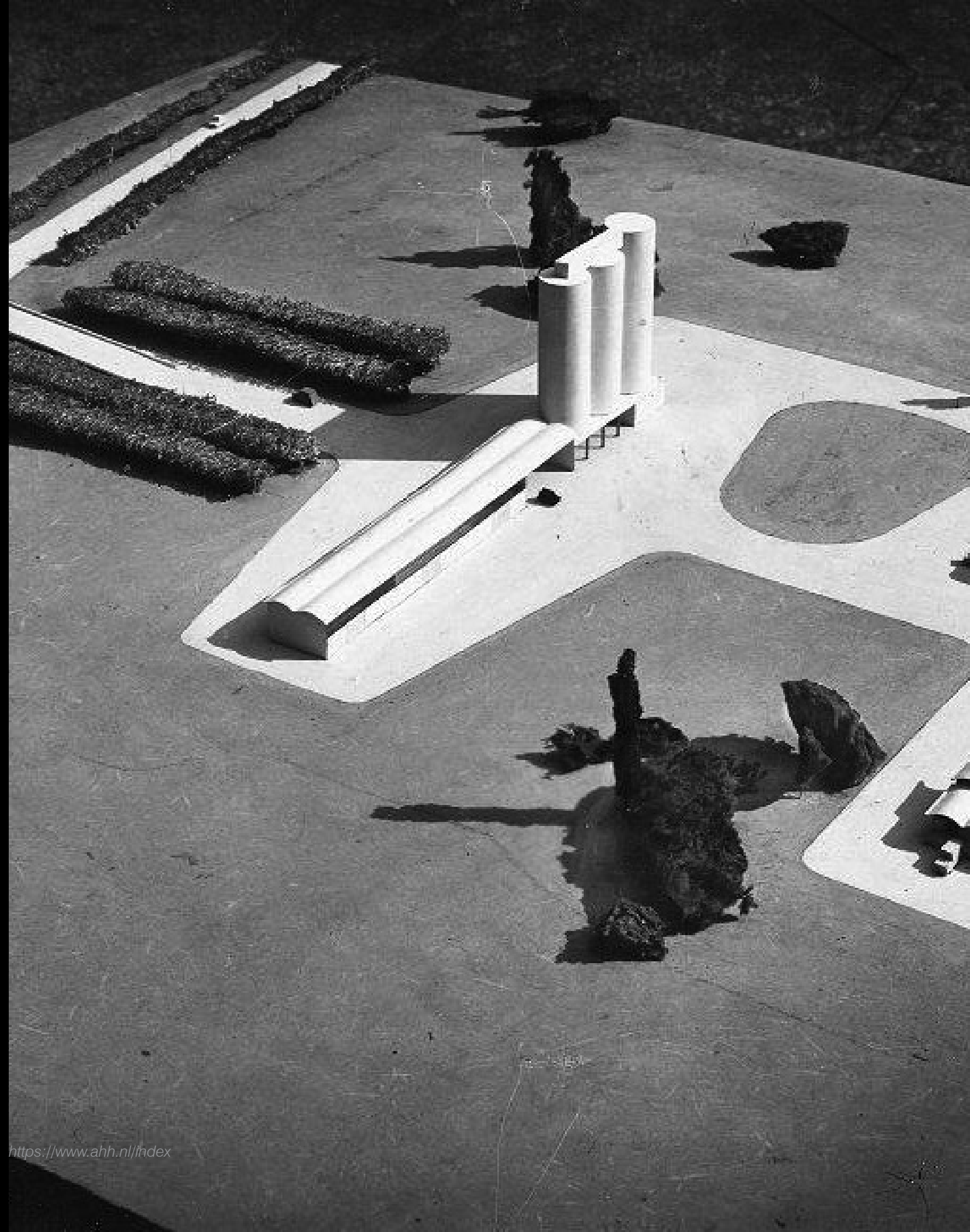




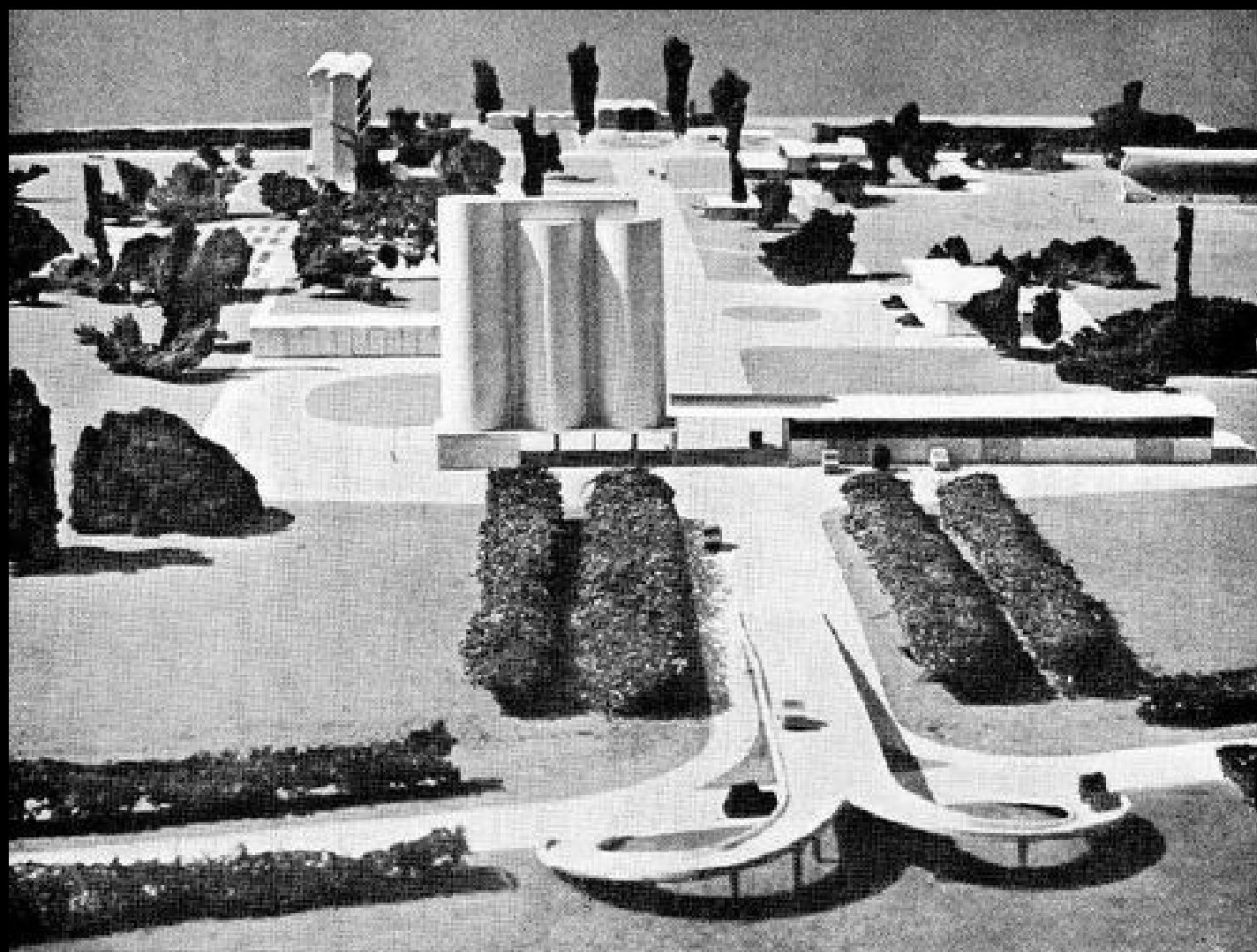
Farming Cooperative Village

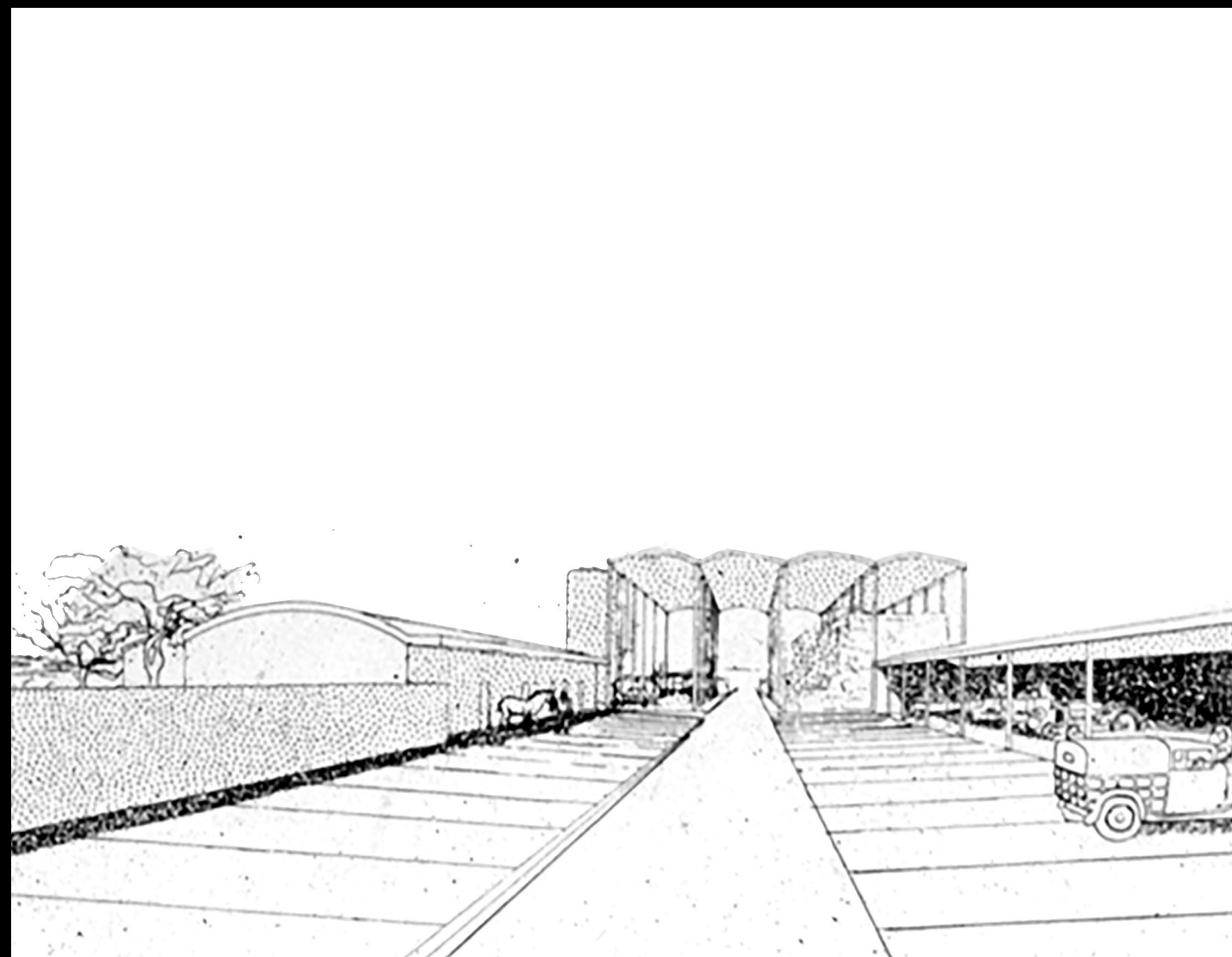
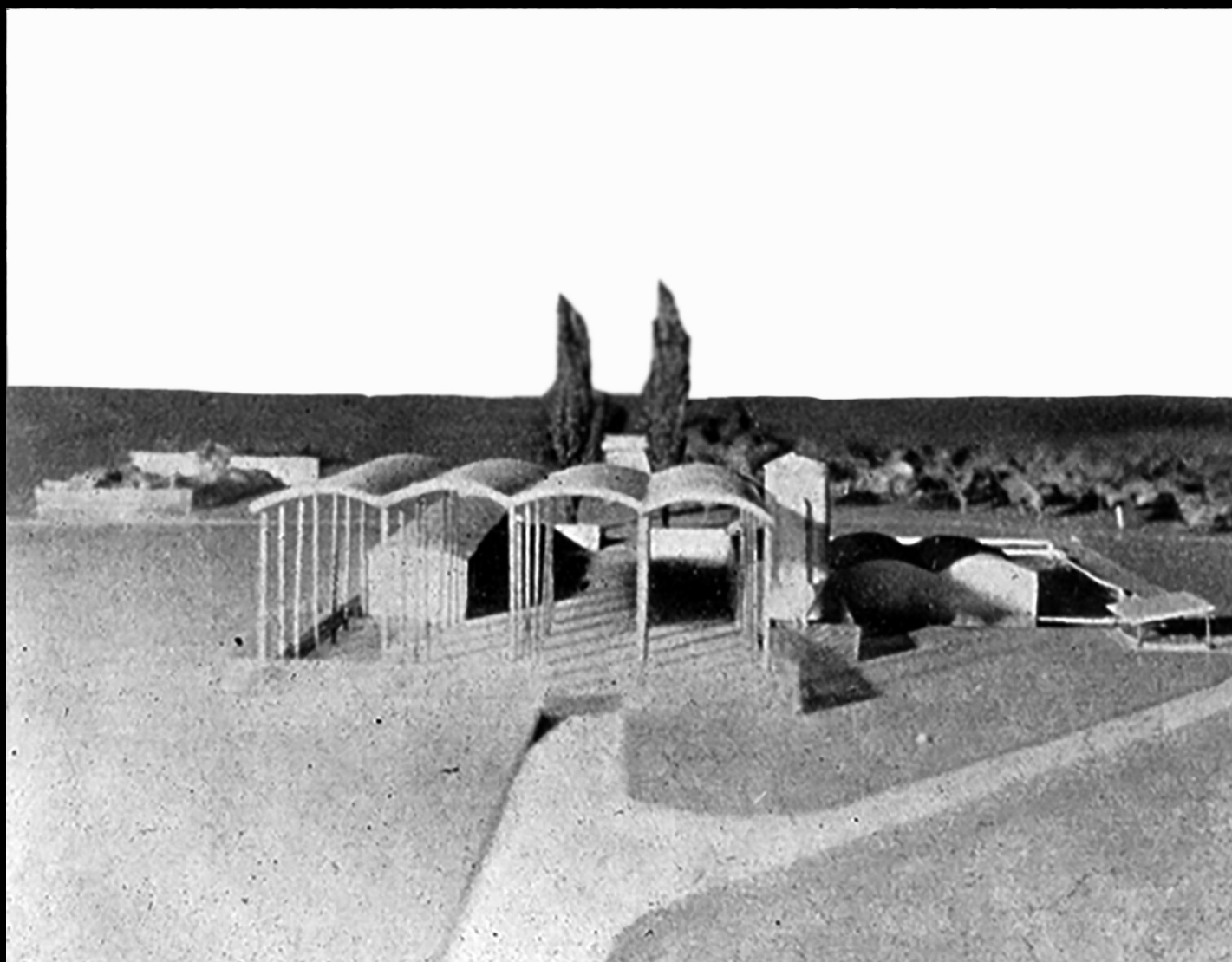
Le Corbusier

1930s











Sarabhai Residence

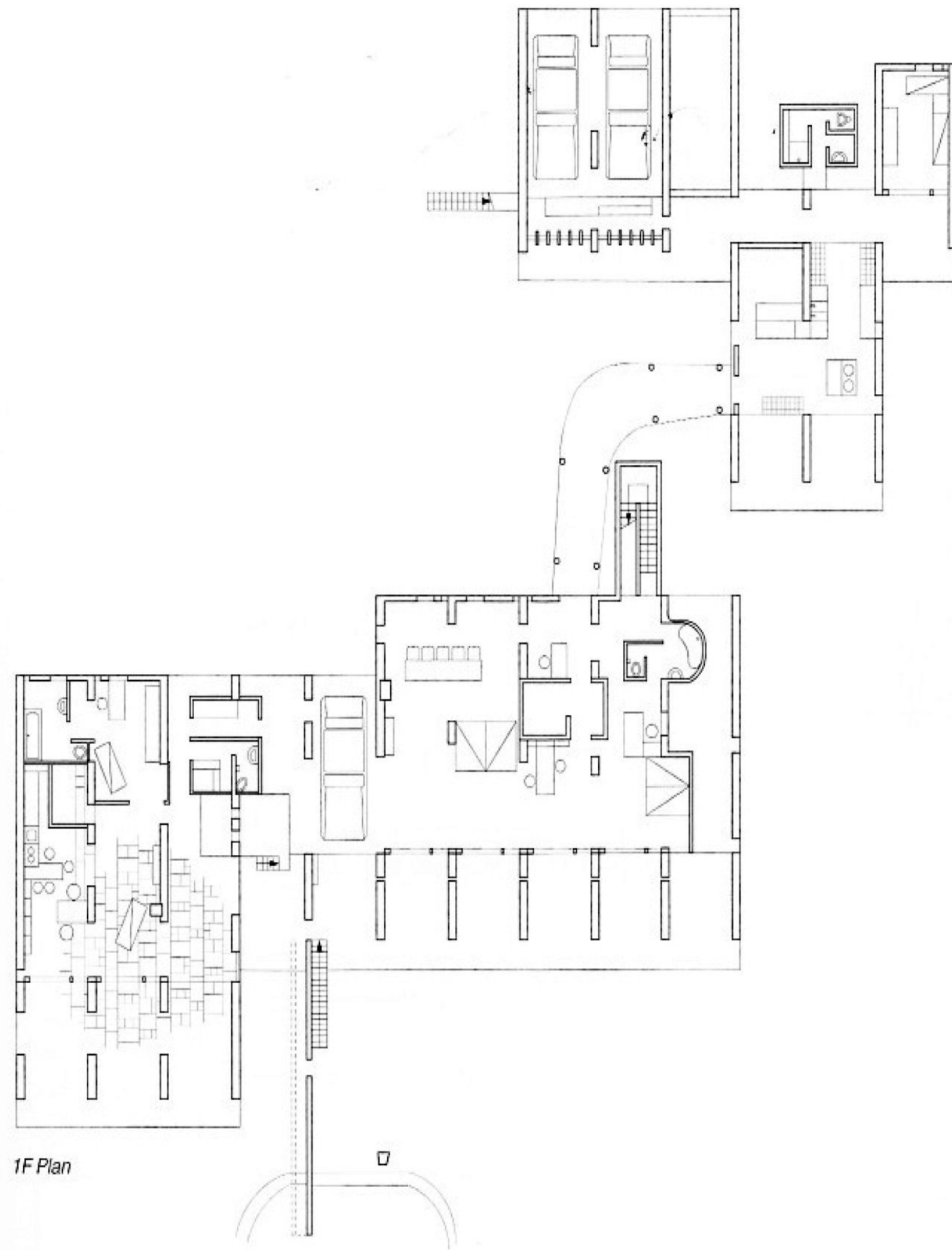
Ahmedabad, India

Le Corbusier

1952

















Kimbell Art Museum

Louis I. Kahn

Fort Worth, TX

1972















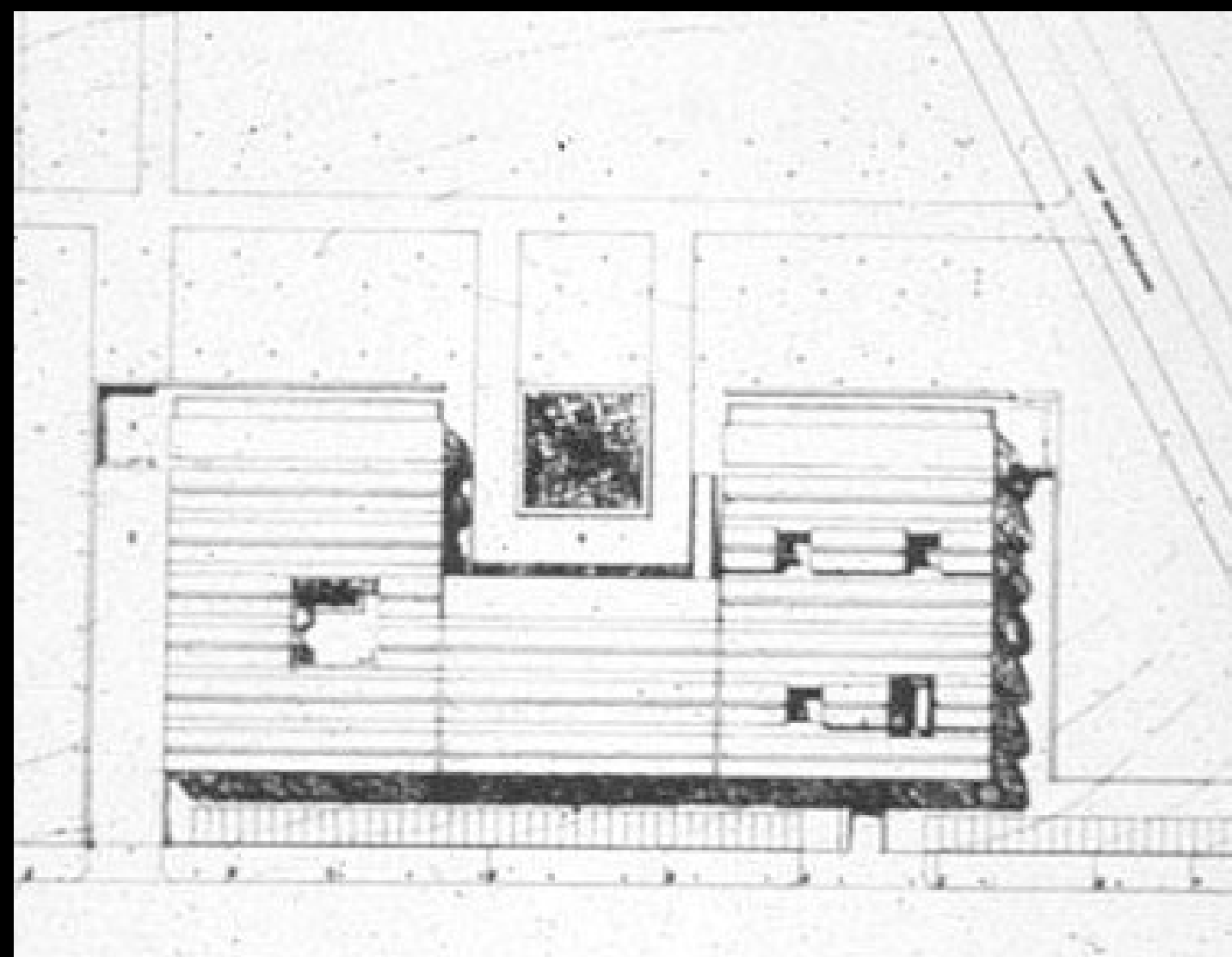




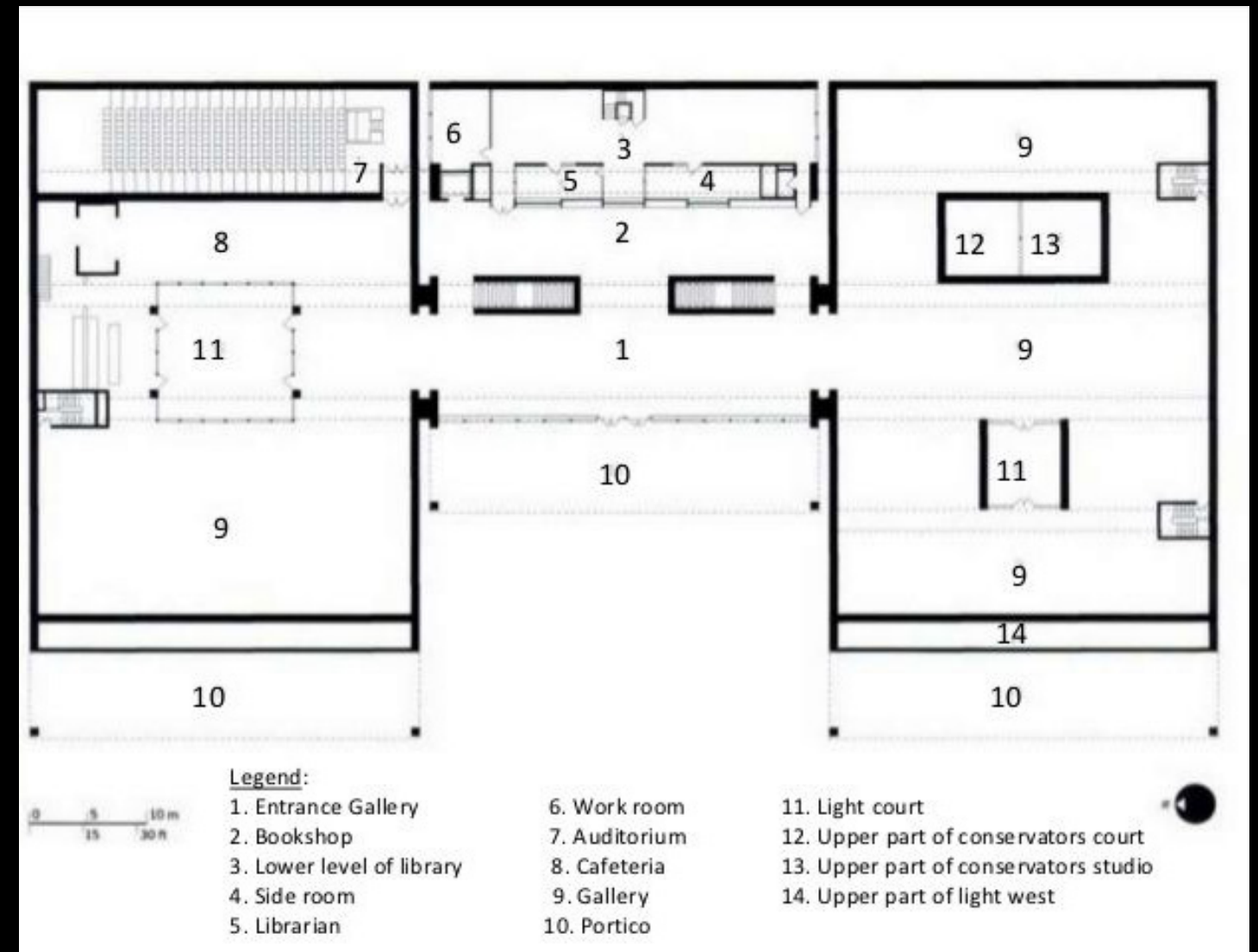






























Modern Art Museum

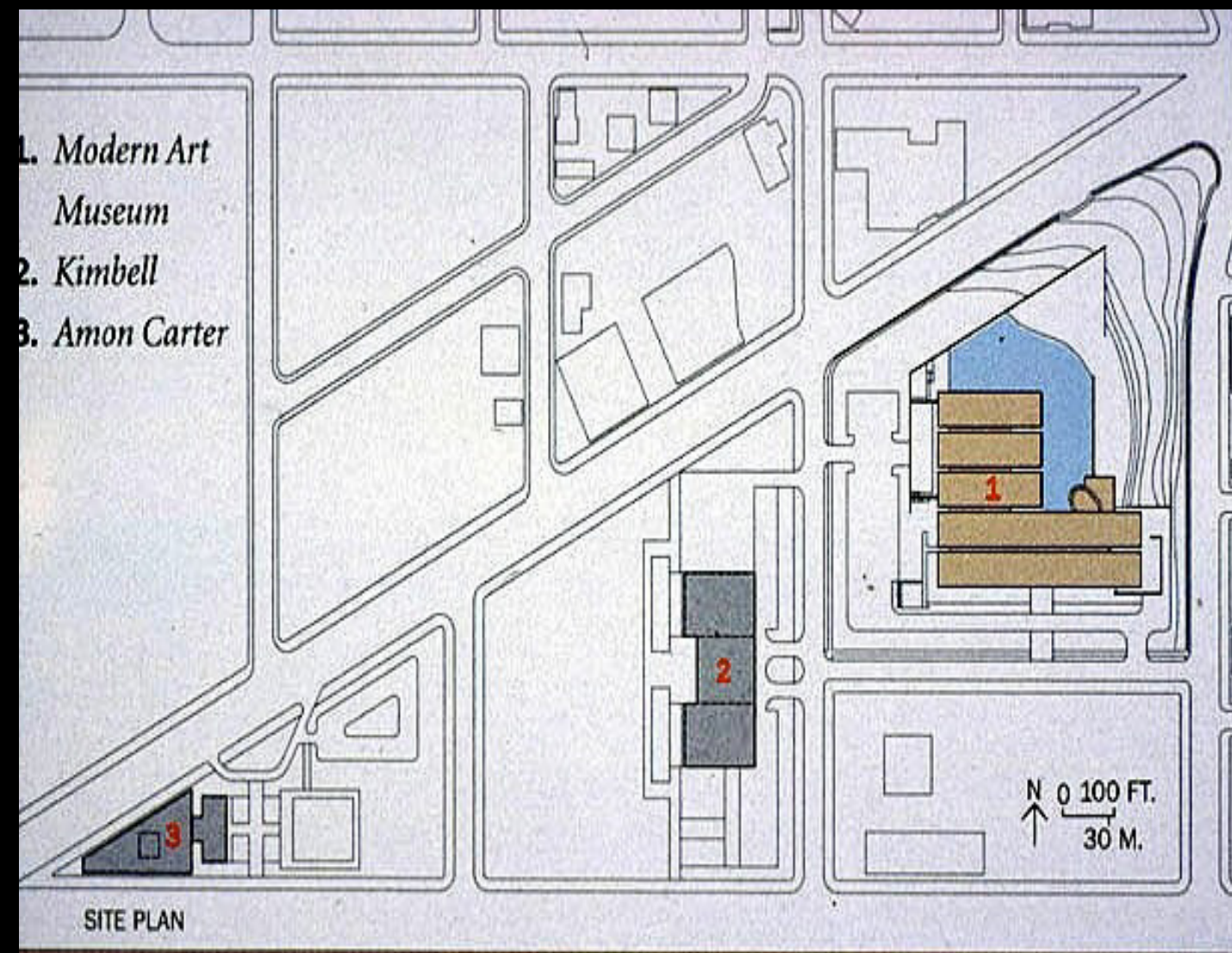
Tadao Ando

Fort Worth, TX

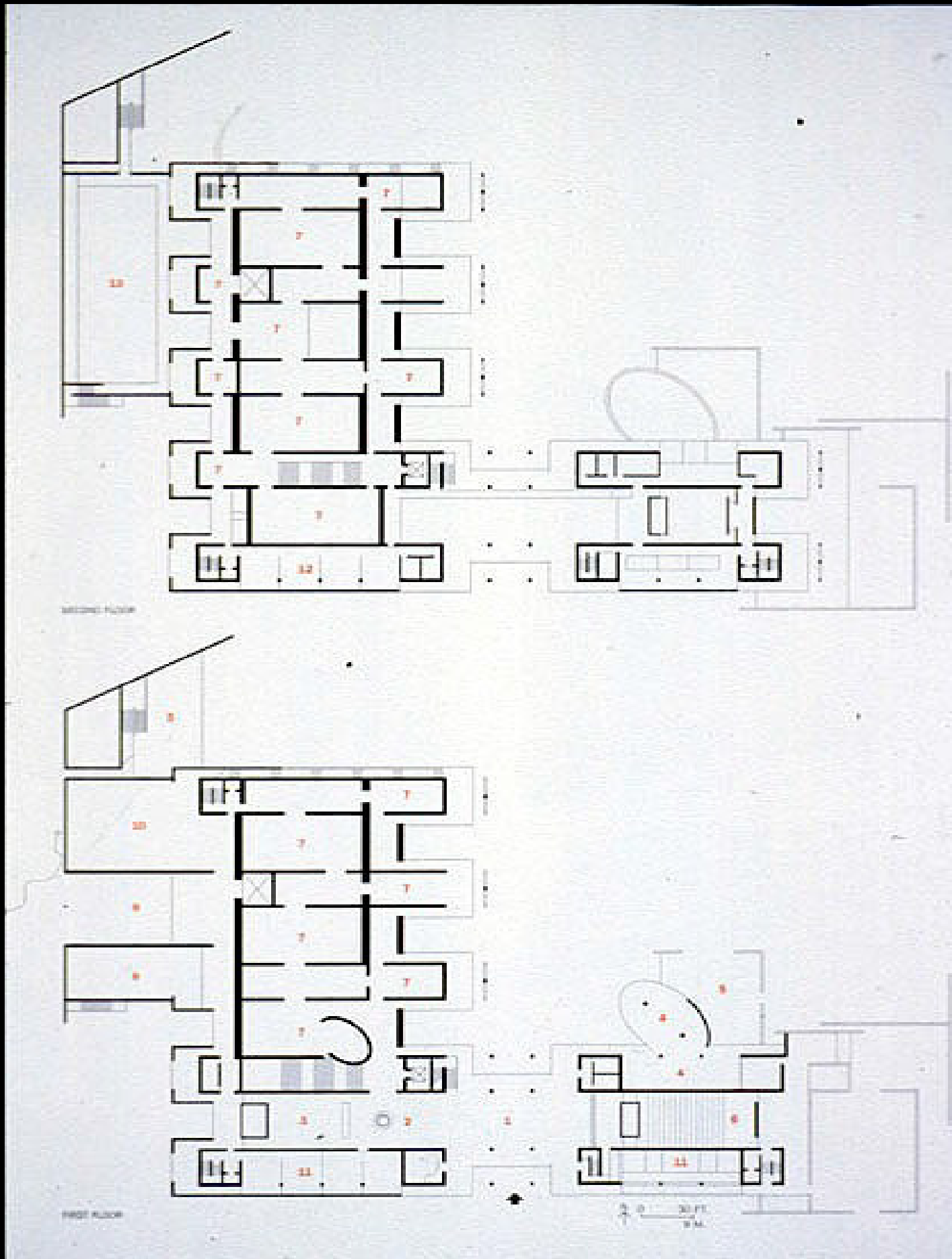
2002





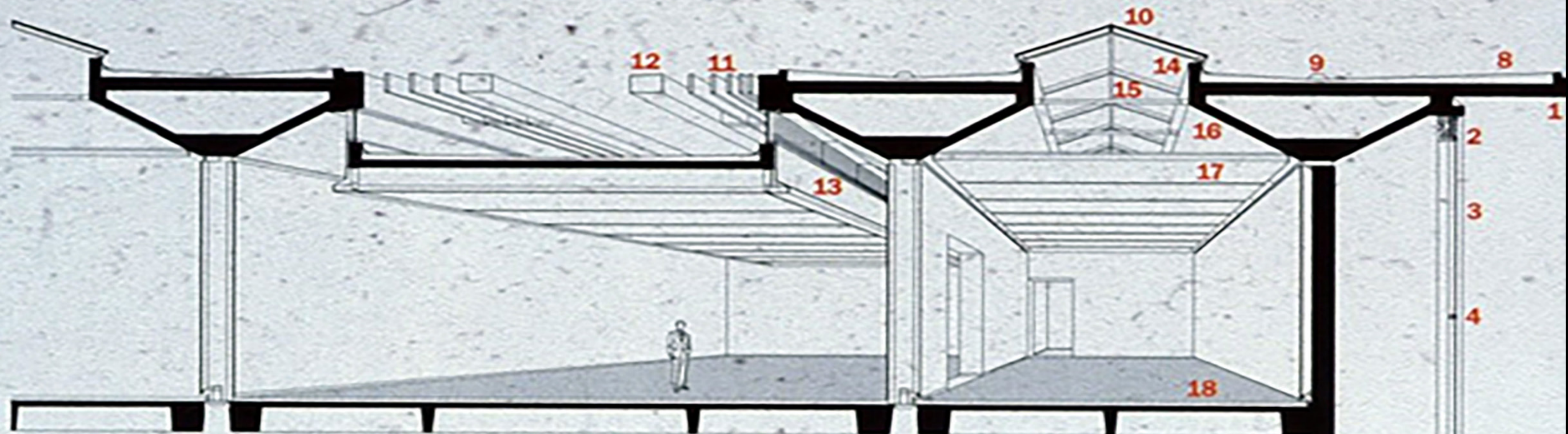




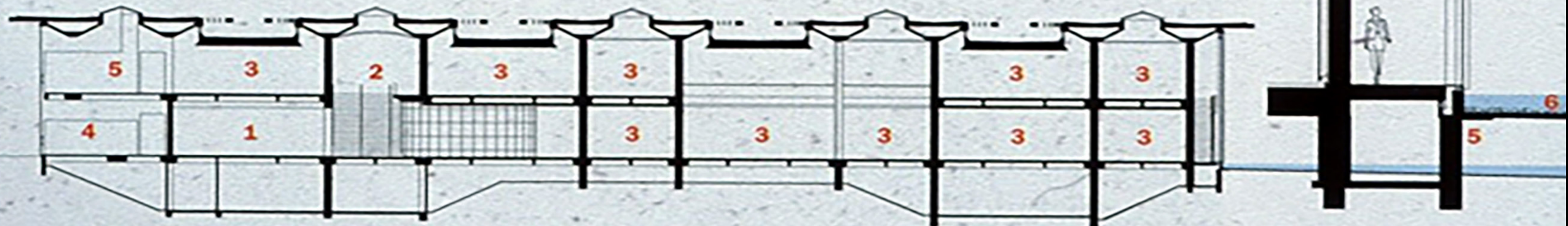




- |                          |                       |                       |                         |
|--------------------------|-----------------------|-----------------------|-------------------------|
| 1. Concrete              | 5. Precast concrete   | 10. Skylight          | 15. Fluorescent lamps   |
| 2. Aluminum louver panel | 6. Gravel             | 11. Aluminum louvers  | 16. Unfinished concrete |
| 3. Insulated glass       | 7. Stainless flashing | 12. GFRC tube         | 17. Translucent fabric  |
| 4. Aluminum mullion      | 8. Concrete roof      | 13. Clerestory window | 18. White oak planks    |
|                          | 9. Roof drain         | 14. Aluminum mullion  |                         |

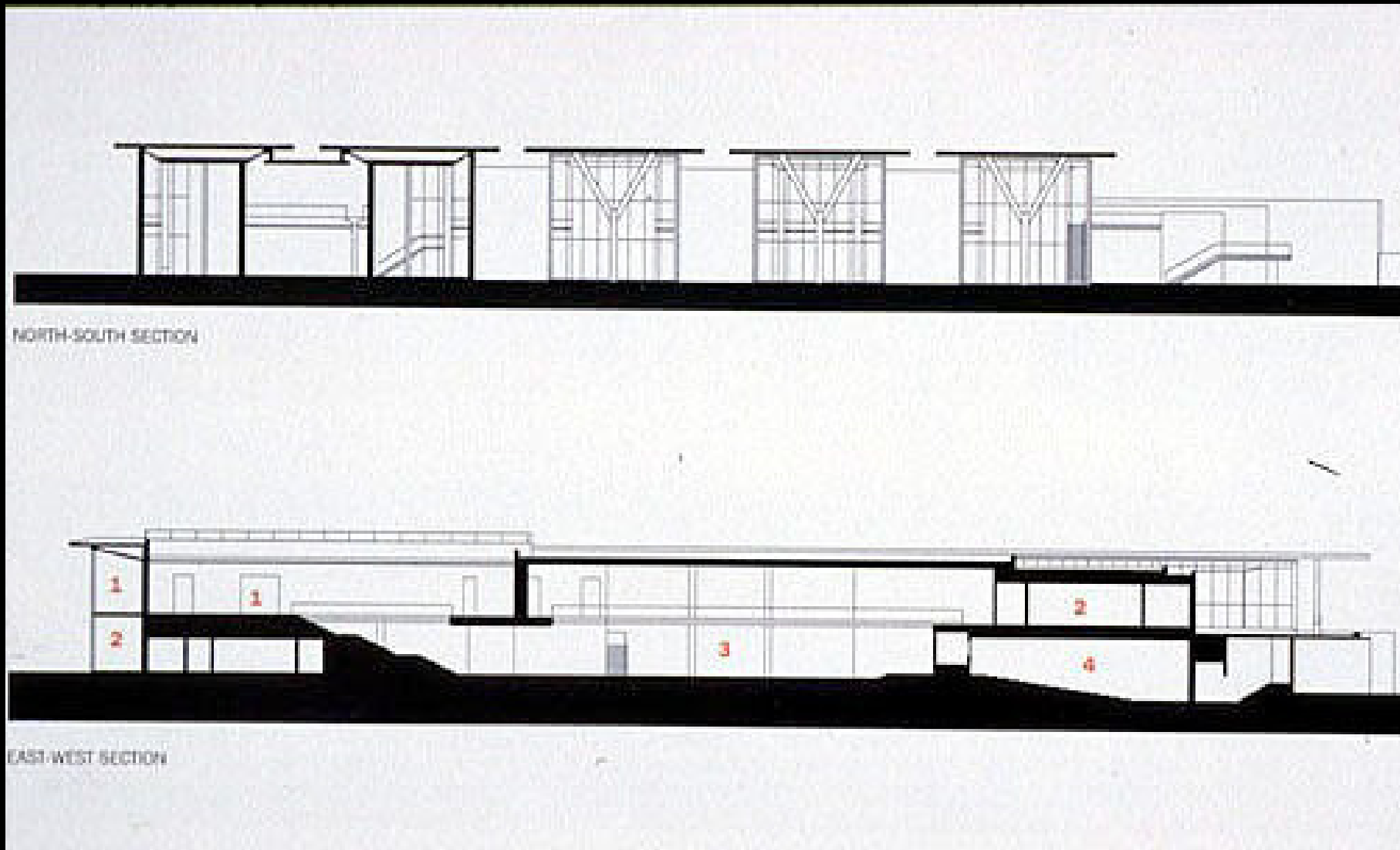


GALLERY PERSPECTIVE

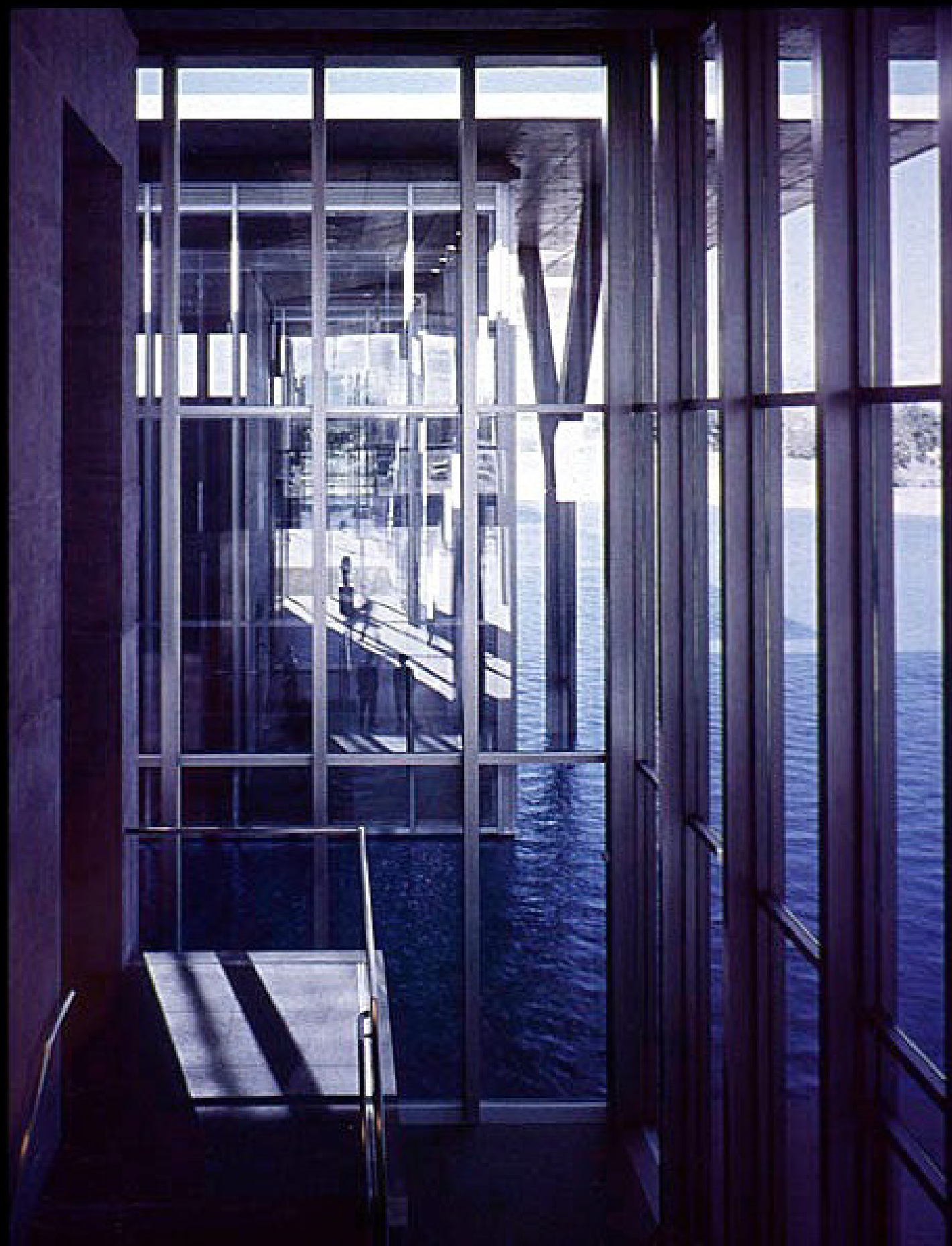


SECTION THROUGH GALLERIES















The entry lobby (this spread and opposite, top) and grand stair (opposite, bottom) provide opportunities for people watching. Since opening in December, the museum has been a hit, drawing more people in a two-day period after Christmas than it had in any month the year before.





